

Juvenile Justice Sourcebook
Delinquency and Criminal Dispositions in
Vermont
2006

Stacy Jolles, M.A.
Youth Justice
Department for Children and Families
802 241-4601
Stacy.jolles@ahs.state.vt.us

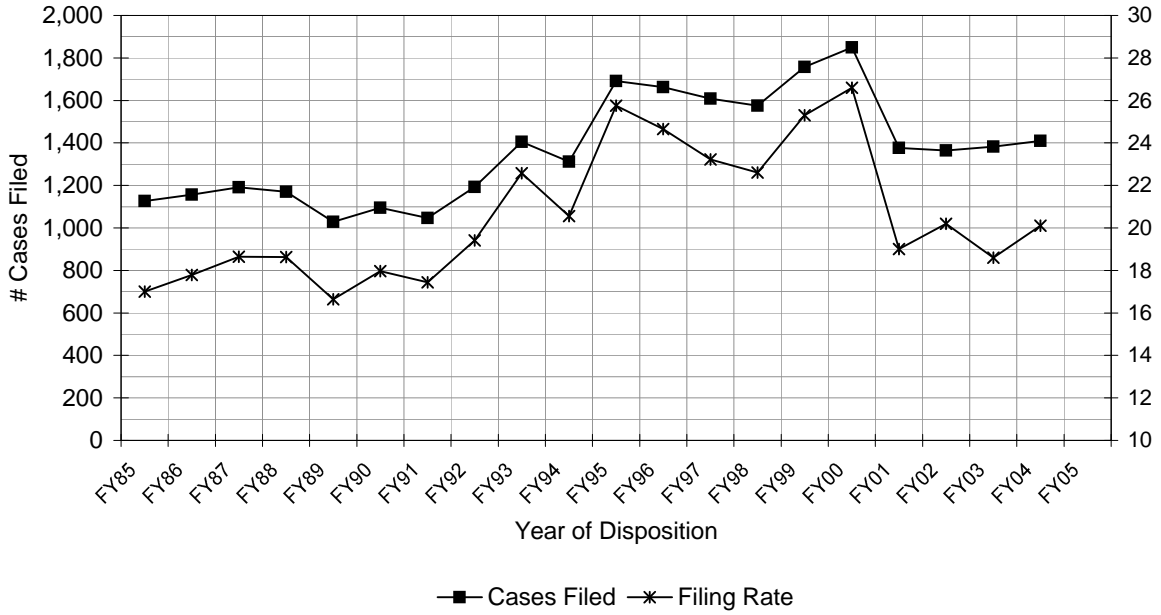
**TABLE 1.1: JUVENILE DELINQUENCY CASES
CASES DISPOSED, CASES FILED AND FILING RATES FY85 - FY05**

<u>Year of Disposition</u>	<u># Cases Added</u>	<u>Filing Rate *</u>	<u># Cases Disposed</u>
FY85	1,127	17.0	1,114
FY86	1,157	17.8	1,164
FY87	1,191	18.6	1,137
FY88	1,170	18.6	1,115
FY89	1,029	16.6	1,122
FY90	1,095	18.0	1,046
FY91	1,047	17.4	1,170
FY92	1,193	19.4	1,092
FY93	1,405	22.6	1,342
FY94	1,311	20.6	1,323
FY95	1,691	25.8	1,499
FY96	1,663	24.7	1,666
FY97	1,609	23.2	1,580
FY98	1,576	22.6	1,526
FY99	1,757	25.3	1,615
FY00	1,850	26.6	1,712
FY01	1,377	19.0	1,585
FY02	1,365	20.2	1,378
FY03	1,382	18.6	1,382
FY04	1,409	20.1	1,399
FY05			

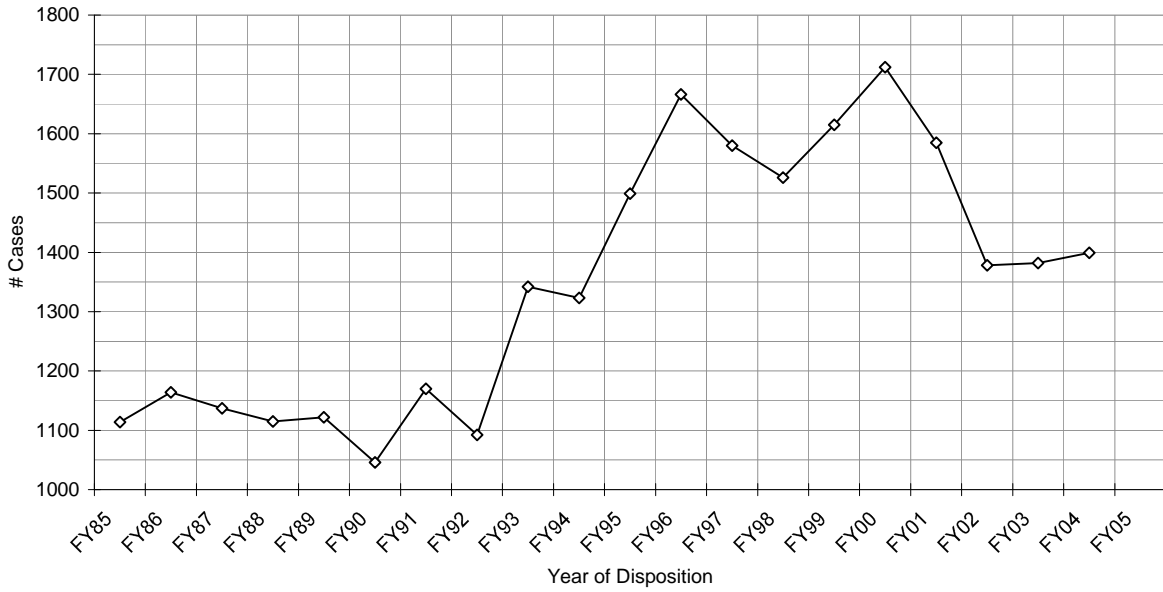
* Filing Rate = Number of cases filed per 1,000 population aged 10-17.

Source: Office of the Court Administrator, State of Vermont annual Judicial Statistics, and Vermont Department of Health, Agency of Human Services annual Vermont Population and Housing Estimates.

Juvenile Delinquency Cases Cases Filed and Filing Rate FY85-FY05



Juvenile Delinquency Cases Disposed FY85 - FY05



**TABLE 1.2: JUVENILE DELINQUENCY CASES
CASES DISPOSED, CASES FILED AND FILING RATES BY COUNTY *, FY90-FY05**

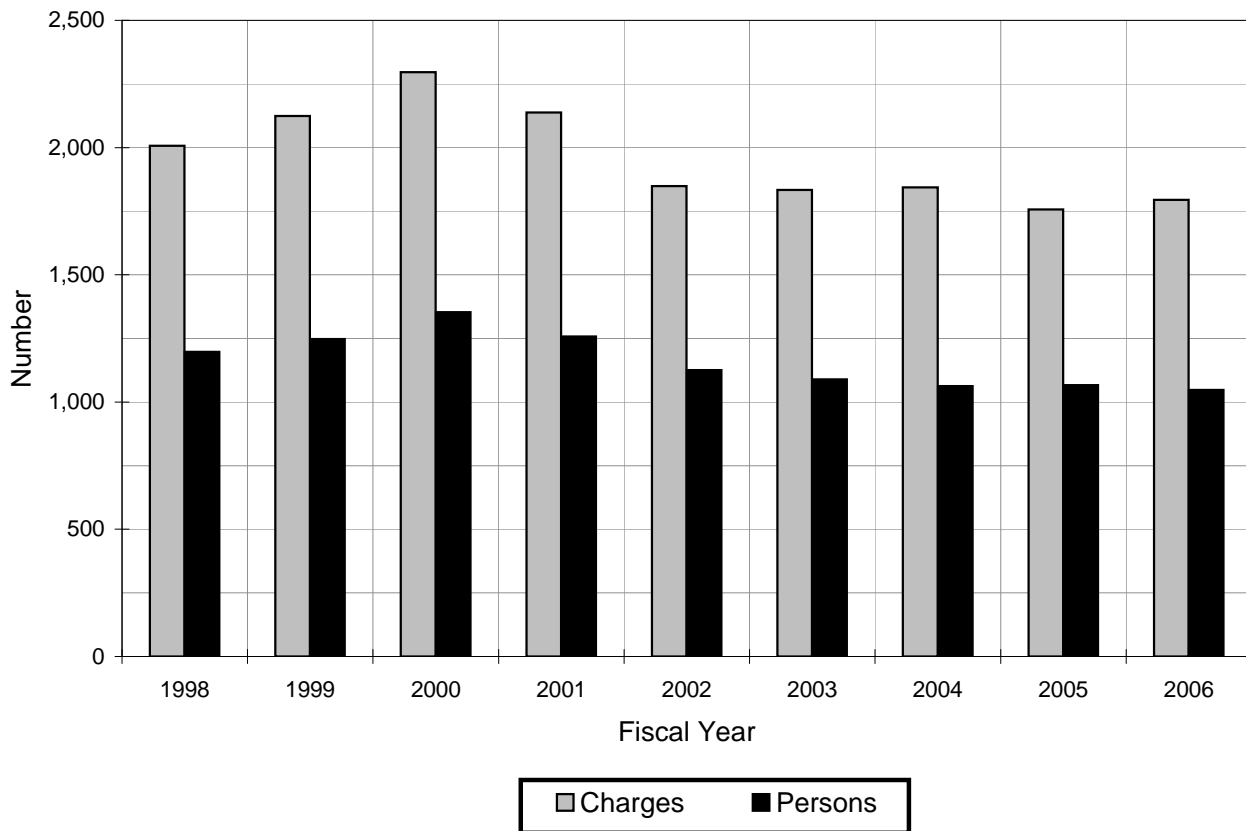
	County *													
	Add	Ben	Cal	Chi	Ess	Fra	Gra	Lam	Ora	Orl	Rut	Was	Wdh	Wdr
FY90														
# Cases Added	77	71	61	239	2	84	5	42	18	30	149	111	103	103
Filing Rate	22.6	19.6	20.0	20.0	2.6	18.0	8.5	21.0	6.2	10.1	24.1	19.8	25.9	19.2
# Cases Disposed	56	66	49	244	0	52	5	36	15	35	143	112	104	129
FY91														
# Cases Added	60	71	70	193	2	79	12	32	37	73	136	92	97	93
Filing Rate	16.6	19.2	20.6	15.4	2.6	15.8	20.9	15.1	12.0	23.8	21.5	15.7	22.2	16.6
# Cases Disposed	80	69	78	275	1	89	8	32	29	53	134	101	97	124
FY92														
# Cases Added	73	102	100	267	20	79	17	36	22	50	115	140	120	52
Filing Rate	19.4	27.3	29.0	20.7	24.8	15.5	27.9	16.3	7.1	16.0	17.7	23.2	27.0	9.2
# Cases Disposed	76	74	108	243	6	82	26	34	29	69	100	93	101	51
FY93														
# Cases Added	63	124	91	274	19	120	9	40	41	70	130	118	178	128
Filing Rate	17.3	32.0	25.4	21.4	25.0	22.4	13.2	18.0	13.0	21.7	20.4	18.9	39.6	21.9
# Cases Disposed	54	126	94	260	26	128	6	28	40	62	128	134	160	96
FY94														
# Cases Added	64	106	57	308	14	123	7	39	29	46	155	108	168	87
Filing Rate	16.5	26.2	15.5	23.8	17.1	23.1	10.4	17.5	8.3	14.5	23.6	17.0	35.9	14.8
# Cases Disposed	74	97	71	296	15	117	10	48	29	45	154	107	179	81
FY95														
# Cases Added	88	144	68	403	23	180	12	47	68	77	155	134	198	94
Filing Rate	22.6	35.8	18.2	29.3	28.8	32.6	17.5	20.4	20.0	23.9	22.8	20.5	41.1	15.3
# Cases Disposed	70	146	56	329	21	167	10	35	59	76	136	115	178	101
FY96														
# Cases Added	66	109	71	375	13	119	3	59	34	81	198	183	204	148
Filing Rate	16.9	25.4	16.3	27.0	17.2	19.5	4.2	25.4	9.6	25.5	29.4	28.6	41.2	23.6
# Cases Disposed	79	104	68	358	21	121	4	56	49	83	160	201	210	152
FY97														
# Cases Added	66	147	83	361	7	128	12	88	33	84	99	143	236	122
Filing Rate	16.2	34.2	21.5	25.3	8.7	21.7	15.4	34.1	9.0	26.0	13.9	21.2	47.3	17.5
# Cases Disposed	60	153	84	333	7	124	7	81	26	75	118	142	218	152
FY98														
# Cases Added	54	152	90	388	6	102	10	76	43	75	130	149	198	103
Filing Rate	13.2	35.0	23.3	26.6	7.2	17.2	12.7	29.0	11.7	23.2	18.3	22.1	39.1	14.7
# Cases Disposed	60	135	81	340	5	103	11	72	43	87	156	130	200	103
FY99														
# Cases Added	79	193	99	415	7	129	5	56	41	73	182	155	154	169
Filing Rate	19.6	44.1	26.3	28.6	8.4	21.8	6.4	21.5	11.4	23.2	25.4	23.5	30.1	24.4
# Cases Disposed	57	178	72	421	4	118	5	47	37	64	135	194	163	120
FY00														
# Cases Added	125	158	89	403	6	140	16	92	39	92	184	166	179	161
Filing Rate	30.9	36.0	23.6	27.7	7.1	23.6	20.5	35.2	10.9	29.2	25.7	25.1	35.0	23.2
# Cases Disposed	127	181	113	355	5	112	7	85	21	89	172	136	152	157
FY01														
# Cases Added	63	152	60	314	5	119	0	49	37	51	133	108	162	124
Filing Rate	14.5	34.6	15.5	19.6	5.9	20.2	0.0	18.1	10.0	15.2	17.8	16.0	30.9	17.9
# Cases Disposed	93	131	46	434	10	136	3	41	22	53	167	124	184	141
FY02														
# Cases Added	97	158	39	264	15	79	5	57	64	81	130	136	140	100
Filing Rate	23.8	39.4	10.6	17.5	19.7	13.9	6.5	21.8	18.9	23.8	19.1	21.4	29.2	16.1
# Cases Disposed	71	153	46	283	11	99	12	67	90	53	125	115	150	103
FY03														
# Cases Added	56	157	54	252	14	145	10	57	44	64	176	119	97	137
Filing Rate	12.5	35.1	13.6	15.3	16.4	23.8	10.9	20.2	11.5	18.5	23.3	17.3	18.1	19.4
# Cases Disposed	67	145	53	249	10	134	9	57	41	95	126	141	144	111
FY04														
# Cases Added	95	162	43	332	14	129	8	64	37	42	178	97	103	105
Filing Rate	21.7	38.4	11.9	20.8	16.8	21.8	9.2	23.4	10.6	13.3	25.2	15.1	21.0	16.1
# Cases Disposed	92	174	43	314	7	110	9	70	37	50	181	95	116	101
FY05														
# Cases Added														
Filing Rate														
# Cases Disposed														

* Add=Addison, Ben=Bennington, Cal=Caledonia, Chi=Chittenden, Ess=Essex, Fra=Franklin, Gra=Grand Isle, Lam=Lamoille, Ora=Orange, Orl=Orleans, Rut=Rutland, Was=Washington, Wdh=Windham, Wdr=Windsor.

**TABLE 1.3: VERMONT STATEWIDE JUVENILE DELINQUENCY CHARGES
NUMBER OF PERSONS CHARGED, FY98 - FY06**

	FY98	FY99	FY00	FY01	FY02	FY03	FY04	FY05	FY06	Total FY04-FY06
Number of Persons	1,197	1,353	1,257	1,126	1,126	1,089	1,063	1,067	1,048	2,808
Number of Charges	2,007	2,124	2,296	2,138	1,849	1,834	1,844	1,757	1,795	5,396

**VT Juvenile Delinquency Charges
Number of Charges & Persons, FY97-FY06**



**TABLE 1.4: VERMONT STATEWIDE JUVENILE DELINQUENCY CHARGES
NUMBER OF CHARGES * BY SEX AND AGE WHEN COMPLAINT WAS FILED, FY01-FY06**

Age When Complaint Was Filed	FY01							FY02							FY03						
	Male		Female		Unknown		Total	Male		Female		Unknown		Total	Male		Female		Unknown		Total
	N	%	N	%	N	%		N	%	N	%	N	%		N	%	N	%	N	%	
10	20	69.0%	7	24.1%	2	6.9%	29	11	73.3%	0	0.0%	4	26.7%	15	21	84.0%	0	0.0%	4	16.0%	25
11	26	52.0%	6	12.0%	18	36.0%	50	24	52.2%	7	15.2%	15	32.6%	46	33	78.6%	2	4.8%	7	16.7%	42
12	81	64.3%	23	18.3%	22	17.5%	126	66	61.7%	18	16.8%	23	21.5%	107	62	59.6%	12	11.5%	30	28.8%	104
13	164	62.4%	58	22.1%	41	15.6%	263	113	58.5%	29	15.0%	51	26.4%	193	160	66.9%	30	12.6%	49	20.5%	239
14	241	52.2%	98	21.2%	123	26.6%	462	247	61.0%	83	20.5%	75	18.5%	405	234	55.2%	106	25.0%	84	19.8%	424
15	406	55.1%	151	20.5%	180	24.4%	737	411	56.4%	110	15.1%	208	28.5%	729	397	61.1%	139	21.4%	114	17.5%	650
16	217	54.7%	102	25.7%	78	19.6%	397	153	53.3%	50	17.4%	84	29.3%	287	176	62.4%	50	17.7%	56	19.9%	282
17	24	42.9%	20	35.7%	12	21.4%	56	18	31.6%	12	21.1%	27	47.4%	57	37	56.1%	14	21.2%	15	22.7%	66
18 & Older	0	0.0%	0	0.0%	2	100%	2	2	0.0%	0	0.0%	0	0.0%	2	0	0.0%	0	0.0%	0	0.0%	0
Missing/Unknown	3	18.8%	1	6.3%	12	75.0%	16	5	62.5%	0	0.0%	3	37.5%	8	1	50.0%	0	0.0%	1	50.0%	2
Total	1,182	55.3%	466	21.8%	490	22.9%	2,138	1,050	56.8%	309	16.7%	490	26.5%	1,849	1,121	61.1%	353	19.2%	360	19.6%	1,834

Age When Complaint Was Filed	FY04							FY05							FY06						
	Male		Female		Unknown		Total	Male		Female		Unknown		Total	Male		Female		Unknown		Total
	N	%	N	%	N	%		N	%	N	%	N	%		N	%	N	%	N	%	
10	29	80.6%	4	11.1%	3	8.3%	36	14	93.3%	1	6.7%	0	0.0%	15	14	73.7%	4	21.1%	1	5.3%	19
11	32	61.5%	12	23.1%	8	15.4%	52	59	88.1%	8	11.9%	0	0.0%	67	42	79.2%	9	17.0%	2	3.8%	53
12	91	69.5%	19	14.5%	21	16.0%	131	85	71.4%	32	26.9%	2	1.7%	119	85	81.0%	20	19.0%	0	0.0%	105
13	198	75.0%	53	20.1%	13	4.9%	264	207	72.4%	63	22.0%	16	5.6%	286	169	74.1%	51	22.4%	8	3.5%	228
14	233	62.0%	107	28.5%	36	9.6%	376	256	65.3%	126	32.1%	10	2.6%	392	239	66.4%	112	31.1%	9	2.5%	360
15	370	63.8%	175	30.2%	35	6.0%	580	348	67.6%	159	30.9%	8	1.6%	515	440	71.2%	166	26.9%	12	1.9%	618
16	176	60.5%	90	30.9%	25	8.6%	291	167	63.7%	82	31.3%	13	5.0%	262	233	69.3%	94	28.0%	9	2.7%	336
17	63	64.9%	30	30.9%	4	4.1%	97	47	52.2%	38	42.2%	5	5.6%	90	51	69.9%	21	28.8%	1	1.4%	73
18 & Older	4	100.0%	0	0.0%	0	0.0%	4	7	87.5%	1	0.0%	0	0.0%	8	1	100.0%	0	0.0%	0	0.0%	1
Missing/Unknown	5	38.5%	4	30.8%	4	30.8%	13	2	66.7%	1	33.3%	0	0.0%	3	2	100.0%	0	0.0%	0	0.0%	2
Total	1,201	65.1%	494	26.8%	149	8.1%	1,844	1,192	67.8%	511	29.1%	54	3.1%	1,757	1,276	71.1%	477	26.6%	42	2.3%	1,795

* Number of charges disposed, NOT number of people.

**TABLE 1.5: VERMONT STATEWIDE JUVENILE DELINQUENCY CHARGES
NUMBER OF CHARGES * BY SEX AND COUNTY, FY01-FY06**

County	FY01							FY02							FY03						
	Male		Female		Unknown		Total	Male		Female		Unknown		Total	Male		Female		Unknown		Total
	N	%	N	%	N	%		N	%	N	%	N	%		N	%	N	%	N	%	
Addison	76	72.4%	23	21.9%	6	5.7%	105	73	79.3%	13	14.1%	6	6.5%	92	70	79.5%	16	18.2%	2	2.3%	88
Bennington	139	78.5%	38	21.5%	0	0.0%	177	138	70.8%	57	29.2%	0	0.0%	195	160	77.7%	46	22.3%	0	0.0%	206
Caledonia	81	87.1%	12	12.9%	0	0.0%	93	64	74.4%	22	25.6%	0	0.0%	86	50	66.7%	25	33.3%	0	0.0%	75
Chittenden	88	16.2%	82	15.1%	372	68.6%	542	61	14.4%	18	4.3%	344	81.3%	423	45	15.1%	13	4.4%	240	80.5%	298
Essex	9	81.8%	2	18.2%	0	0.0%	11	9	75.0%	2	16.7%	1	8.3%	12	5	83.3%	1	16.7%	0	0.0%	6
Franklin	92	57.9%	35	22.0%	32	20.1%	159	69	53.5%	33	25.6%	27	20.9%	129	118	72.0%	37	22.6%	9	5.5%	164
Grand Isle	6	85.7%	1	14.3%	0	0.0%	7	8	88.9%	1	11.1%	0	0.0%	9	5	83.3%	0	0.0%	1	16.7%	6
Lamoille	57	80.3%	14	19.7%	0	0.0%	71	67	77.9%	16	18.6%	3	3.5%	86	90	85.7%	15	14.3%	0	0.0%	105
Orange	2	4.9%	2	4.9%	37	90.2%	41	0	0.0%	1	1.4%	71	98.6%	72	0	0.0%	1	1.9%	51	98.1%	52
Orleans	48	72.7%	18	27.3%	0	0.0%	66	75	84.3%	14	15.7%	0	0.0%	89	112	83.0%	21	15.6%	2	1.5%	135
Rutland	138	64.5%	75	35.0%	1	0.5%	214	118	74.2%	37	23.3%	4	2.5%	159	103	62.0%	63	38.0%	0	0.0%	166
Washington	114	67.5%	52	30.8%	3	1.8%	169	90	71.4%	30	23.8%	6	4.8%	126	89	58.2%	46	30.1%	18	11.8%	153
Windham	148	64.6%	50	21.8%	31	13.5%	229	110	61.8%	42	23.6%	26	14.6%	178	159	69.7%	38	16.7%	31	13.6%	228
Windsor	184	72.4%	62	24.4%	8	3.1%	254	168	87.0%	23	11.9%	2	1.0%	193	115	75.7%	31	20.4%	6	3.9%	152
Total	1,182	55.3%	466	21.8%	490	22.9%	2,138	1,050	56.8%	309	16.7%	490	26.5%	1,849	1,121	61.1%	353	19.2%	360	19.6%	1,834

County	FY04							FY05							FY06						
	Male		Female		Unknown		Total	Male		Female		Unknown		Total	Male		Female		Unknown		Total
	N	%	N	%	N	%		N	%	N	%	N	%		N	%	N	%	N	%	
Addison	92	78.0%	24	20.3%	2	1.7%	118	70	86.4%	11	13.6%	0	0.0%	81	53	76.8%	16	23.2%	0	0.0%	69
Bennington	184	76.7%	56	23.3%	0	0.0%	240	153	73.6%	54	26.0%	1	0.5%	208	85	62.0%	52	38.0%	0	0.0%	137
Caledonia	30	58.8%	21	41.2%	0	0.0%	51	56	65.1%	30	34.9%	0	0.0%	86	45	54.9%	37	45.1%	0	0.0%	82
Chittenden	216	52.6%	118	28.7%	77	18.7%	411	261	64.4%	126	31.1%	18	4.4%	405	291	74.4%	92	23.5%	8	2.0%	391
Essex	3	42.9%	3	42.9%	1	14.3%	7	10	76.9%	0	0.0%	3	23.1%	13	6	54.5%	3	27.3%	2	18.2%	11
Franklin	117	78.5%	29	19.5%	3	2.0%	149	126	72.4%	46	26.4%	2	1.1%	174	103	72.0%	39	27.3%	1	0.7%	143
Grand Isle	7	63.6%	3	27.3%	1	9.1%	11	11	91.7%	1	8.3%	0	0.0%	12	5	62.5%	3	37.5%	0	0.0%	8
Lamoille	68	73.9%	19	20.7%	5	5.4%	92	46	68.7%	21	31.3%	0	0.0%	67	47	92.2%	4	7.8%	0	0.0%	51
Orange	17	34.0%	5	10.0%	28	56.0%	50	22	55.0%	11	27.5%	7	17.5%	40	33	60.0%	12	21.8%	10	18.2%	55
Orleans	44	68.8%	20	31.3%	0	0.0%	64	43	87.8%	4	8.2%	2	4.1%	49	101	83.5%	16	13.2%	4	3.3%	121
Rutland	137	56.1%	107	43.9%	0	0.0%	244	104	52.3%	95	47.7%	0	0.0%	199	144	64.0%	81	36.0%	0	0.0%	225
Washington	86	74.8%	26	22.6%	3	2.6%	115	111	77.6%	31	21.7%	1	0.7%	143	146	79.8%	35	19.1%	2	1.1%	183
Windham	90	59.6%	32	21.2%	29	19.2%	151	89	64.5%	36	26.1%	13	9.4%	138	133	71.5%	51	27.4%	2	1.1%	186
Windsor	110	78.0%	31	22.0%	0	0.0%	141	90	63.4%	45	31.7%	7	4.9%	142	84	63.2%	36	27.1%	13	9.8%	133
Total	1,201	65.1%	494	26.8%	149	8.1%	1,844	1,192	67.8%	511	29.1%	54	3.1%	1,757	1,276	71.1%	477	26.6%	42	2.3%	1,795

* Number of charges disposed, NOT number of people.

**TABLE 1.6: VERMONT STATEWIDE JUVENILE DELINQUENCY CHARGES
ORIGINAL CHARGE CATEGORY * , FY01-FY06**

Original Charge Category	FY01		FY02		FY03		FY04		FY05		FY06		5 Year Average FY02-FY06	
	N	%	N	%	N	%	N	%	N	%	N	%	N	%
Alcohol Possession/Furnishing	296	13.8%	224	12.1%	178	9.7%	192	10.4%	216	12.3%	216	12.0%	205	11.3%
Arson	3	0.1%	12	0.6%	12	0.7%	13	0.7%	10	0.6%	14	0.8%	12	0.7%
Burglary	117	5.5%	101	5.5%	102	5.6%	101	5.5%	94	5.4%	127	7.1%	105	5.8%
C&N	8	0.4%	9	0.5%	11	0.6%	10	0.5%	6	0.3%	16	0.9%	10	0.6%
Disorderly Conduct	142	6.6%	158	8.5%	135	7.4%	163	8.8%	125	7.1%	162	9.0%	149	8.2%
False Alarms	28	1.3%	14	0.8%	14	0.8%	19	1.0%	17	1.0%	9	0.5%	15	0.8%
Forgery/Counterfeiting	18	0.8%	12	0.6%	7	0.4%	10	0.5%	5	0.3%	2	0.1%	7	0.4%
Fraud	2	0.1%	4	0.2%	8	0.4%	10	0.5%	12	0.7%	13	0.7%	9	0.5%
Grand Larceny	30	1.4%	31	1.7%	45	2.5%	21	1.1%	28	1.6%	29	1.6%	31	1.7%
L&L with Child	27	1.3%	22	1.2%	24	1.3%	24	1.3%	33	1.9%	35	1.9%	28	1.5%
Lascivious Conduct	48	2.2%	20	1.1%	23	1.3%	22	1.2%	29	1.7%	18	1.0%	22	1.2%
Lewdness	2	0.1%	2	0.1%	5	0.3%	1	0.1%	2	0.1%	2	0.1%	2	0.1%
Misc. Title 13	130	6.1%	124	6.7%	91	5.0%	117	6.3%	104	5.9%	110	6.1%	109	6.0%
Misc. Title 18 (Drugs)	24	1.1%	29	1.6%	24	1.3%	27	1.5%	17	1.0%	19	1.1%	23	1.3%
Misc. Title 23 (DMV)	13	0.6%	23	1.2%	19	1.0%	9	0.5%	16	0.9%	18	1.0%	17	0.9%
Operating Without Owner's Consent	46	2.2%	78	4.2%	43	2.3%	37	2.0%	46	2.6%	60	3.3%	53	2.9%
Petit Larceny	149	7.0%	128	6.9%	123	6.7%	126	6.8%	83	4.7%	77	4.3%	107	5.9%
Possession Marijuana	100	4.7%	104	5.6%	105	5.7%	77	4.2%	83	4.7%	62	3.5%	86	4.7%
Reckless Endangerment	11	0.5%	15	0.8%	10	0.5%	14	0.8%	23	1.3%	13	0.7%	15	0.8%
Sexual Assault	7	0.3%	10	0.5%	7	0.4%	19	1.0%	17	1.0%	11	0.6%	13	0.7%
Sexual Assault on a Minor	18	0.8%	9	0.5%	14	0.8%	15	0.8%	20	1.1%	18	1.0%	15	0.8%
Shoplifting	178	8.3%	128	6.9%	104	5.7%	119	6.5%	96	5.5%	84	4.7%	106	5.8%
Simple Assault	250	11.7%	214	11.6%	233	12.7%	264	14.3%	235	13.4%	218	12.1%	233	12.8%
Simple Assault Domestic	23	1.1%	27	1.5%	61	3.3%	74	4.0%	73	4.2%	70	3.9%	61	3.4%
Stolen Property	59	2.8%	31	1.7%	36	2.0%	32	1.7%	35	2.0%	30	1.7%	33	1.8%
Technical Violations	20	0.9%	13	0.7%	9	0.5%	0	0.0%	6	0.3%	27	1.5%	11	0.6%
Unlawful Mischief	242	11.3%	190	10.3%	260	14.2%	205	11.1%	214	12.2%	206	11.5%	215	11.8%
Unlawful Trespass	80	3.7%	54	2.9%	74	4.0%	57	3.1%	55	3.1%	62	3.5%	60	3.3%
Violation Conditions of Release	41	1.9%	39	2.1%	36	2.0%	53	2.9%	26	1.5%	41	2.3%	39	2.1%
Weapons at School	19	0.9%	19	1.0%	16	0.9%	12	0.7%	20	1.1%	25	1.4%	18	1.0%
Missing/Unknown	7	0.3%	5	0.3%	5	0.3%	1	0.1%	11	0.6%	1	0.1%	5	0.3%
Total	2,138	100.0%	1,849	100.0%	1,834	100.0%	1,844	100.0%	1,757	100.0%	1,795	100.0%	1,816	100.0%

* Based on the number of charges, NOT the number of people charged.

**TABLE 1.6: VERMONT STATEWIDE JUVENILE DELINQUENCY CHARGES
ORIGINAL CHARGE CATEGORY *, FY95-FY00**

Original Charge Category	FY95		FY96		FY97		FY98		FY99		FY00		5 Year Average FY96-FY00	
	N	%	N	%	N	%	N	%	N	%	N	%	N	%
Shoplifting	308	17.0%	288	13.3%	244	11.6%	227	11.3%	224	10.6%	181	7.9%	233	10.9%
Unlawful Mischief	243	13.4%	299	13.8%	241	11.5%	229	11.4%	233	11.0%	289	12.6%	258	12.1%
Simple Assault	244	13.5%	251	11.6%	254	12.1%	248	12.4%	235	11.1%	242	10.5%	246	11.5%
Petit Larceny	150	8.3%	242	11.2%	211	10.0%	187	9.3%	138	6.5%	154	6.7%	186	8.7%
Burglary	149	8.2%	167	7.7%	145	6.9%	159	7.9%	117	5.5%	144	6.3%	146	6.8%
Unlawful Trespass	80	4.4%	136	6.3%	116	5.5%	93	4.6%	88	4.1%	105	4.6%	108	5.0%
Alcohol Possession/Furnishing	79	4.4%	123	5.7%	101	4.8%	117	5.8%	176	8.3%	305	13.3%	164	7.7%
Disorderly Conduct	67	3.7%	85	3.9%	81	3.9%	102	5.1%	121	5.7%	141	6.1%	106	5.0%
Possession Marijuana	57	3.1%	85	3.9%	57	2.7%	65	3.2%	95	4.5%	96	4.2%	80	3.7%
Misc. Title 13	50	2.8%	68	3.1%	214	10.2%	126	6.3%	133	6.3%	146	6.4%	137	6.4%
Stolen Property	52	2.9%	58	2.7%	68	3.2%	47	2.3%	68	3.2%	50	2.2%	58	2.7%
Operating Without Owner's Consent	42	2.3%	55	2.5%	46	2.2%	61	3.0%	81	3.8%	55	2.4%	60	2.8%
L&L with Child	42	2.3%	39	1.8%	22	1.0%	25	1.2%	51	2.4%	32	1.4%	34	1.6%
Sexual Assault on a Minor	32	1.8%	27	1.2%	26	1.2%	37	1.8%	19	0.9%	18	0.8%	25	1.2%
Violation Conditions of Release	14	0.8%	40	1.8%	39	1.9%	28	1.4%	50	2.4%	38	1.7%	39	1.8%
Misc. Title 23 (DMV)	15	0.8%	27	1.2%	20	1.0%	24	1.2%	10	0.5%	19	0.8%	20	0.9%
Grand Larceny	15	0.8%	27	1.2%	48	2.3%	35	1.7%	47	2.2%	38	1.7%	39	1.8%
Weapons at School	25	1.4%	14	0.6%	5	0.2%	10	0.5%	17	0.8%	14	0.6%	12	0.6%
Arson	19	1.0%	19	0.9%	13	0.6%	13	0.6%	18	0.8%	23	1.0%	17	0.8%
Simple Assault Domestic	15	0.8%	14	0.6%	5	0.2%	35	1.7%	39	1.8%	38	1.7%	26	1.2%
Lascivious Conduct	16	0.9%	12	0.6%	19	0.9%	38	1.9%	30	1.4%	25	1.1%	25	1.2%
Forgery/Counterfeiting	16	0.9%	11	0.5%	8	0.4%	11	0.5%	17	0.8%	16	0.7%	13	0.6%
Fraud	16	0.9%	11	0.5%	11	0.5%	5	0.2%	6	0.3%	5	0.2%	8	0.4%
Sexual Assault	9	0.5%	10	0.5%	12	0.6%	9	0.4%	18	0.8%	14	0.6%	13	0.6%
Reckless Endangerment	7	0.4%	11	0.5%	8	0.4%	5	0.2%	13	0.6%	20	0.9%	11	0.5%
False Alarms	11	0.6%	6	0.3%	18	0.9%	11	0.5%	23	1.1%	38	1.7%	19	0.9%
C&N	4	0.2%	11	0.5%	8	0.4%	9	0.4%	4	0.2%	11	0.5%	9	0.4%
Misc. Title 18 (Drugs)	6	0.3%	7	0.3%	25	1.2%	14	0.7%	26	1.2%	26	1.1%	20	0.9%
Lewdness	9	0.5%	4	0.2%	2	0.1%	3	0.1%	0	0.0%	0	0.0%	2	0.1%
Technical Violations	14	0.8%	11	0.5%	33	1.6%	29	1.4%	21	1.0%	13	0.6%	21	1.0%
Missing/Unknown	6	0.3%	7	0.3%	0	0.0%	5	0.2%	4	0.2%	0	0.0%	3	0.1%
Total	1,812	100.0%	2,165	100.0%	2,100	100.0%	2,007	100.0%	2,122	100.0%	2,296	100.0%	2,138	100.0%

* Based on the number of charges, NOT the number of people charged.

**TABLE 1.7: VERMONT STATEWIDE JUVENILE DELINQUENCY CASES
ORIGINAL CHARGE CATEGORY *
BY AGE WHEN COMPLAINT WAS FILED = 10-15, FY01-FY06**

Original Charge Category	FY01		FY02		FY03		FY04		FY05		FY06		5 Year Average FY02-FY06	
	N	%	N	%	N	%	N	%	N	%	N	%	N	%
Alcohol Possession/Furnishing	223	13.4%	189	12.6%	144	9.7%	159	11.0%	187	13.4%	177	12.8%	171	11.9%
Arson	3	0.2%	9	0.6%	11	0.7%	11	0.8%	7	0.5%	12	0.9%	10	0.7%
Burglary	96	5.8%	86	5.8%	80	5.4%	76	5.3%	70	5.0%	86	6.2%	80	5.5%
C&N	6	0.4%	8	0.5%	9	0.6%	6	0.4%	5	0.4%	12	0.9%	8	0.6%
Disorderly Conduct	102	6.1%	124	8.3%	113	7.6%	121	8.4%	91	6.5%	137	9.9%	117	8.1%
False Alarms	23	1.4%	14	0.9%	11	0.7%	17	1.2%	16	1.1%	8	0.6%	13	0.9%
Forgery/Counterfeiting	14	0.8%	6	0.4%	7	0.5%	1	0.1%	3	0.2%	1	0.1%	4	0.3%
Fraud	0	0.0%	4	0.3%	7	0.5%	7	0.5%	3	0.2%	3	0.2%	5	0.3%
Grand Larceny	24	1.4%	25	1.7%	30	2.0%	16	1.1%	23	1.6%	25	1.8%	24	1.7%
L&L with Child	23	1.4%	19	1.3%	22	1.5%	24	1.7%	28	2.0%	26	1.9%	24	1.7%
Lascivious Conduct	41	2.5%	19	1.3%	22	1.5%	20	1.4%	27	1.9%	14	1.0%	20	1.4%
Lewdness	2	0.1%	0	0.0%	3	0.2%	1	0.1%	2	0.1%	1	0.1%	1	0.1%
Misc. Title 13	88	5.3%	95	6.4%	67	4.5%	89	6.2%	78	5.6%	83	6.0%	82	5.7%
Misc. Title 18 (Drugs)	23	1.4%	18	1.2%	19	1.3%	15	1.0%	12	0.9%	14	1.0%	16	1.1%
Misc. Title 23 (DMV)	8	0.5%	19	1.3%	17	1.1%	4	0.3%	12	0.9%	14	1.0%	13	0.9%
Operating Without Owner's Consent	33	2.0%	65	4.3%	33	2.2%	28	1.9%	34	2.4%	48	3.5%	42	2.9%
Petit Larceny	133	8.0%	109	7.3%	111	7.5%	98	6.8%	64	4.6%	64	4.6%	89	6.2%
Possession Marijuana	75	4.5%	76	5.1%	79	5.3%	56	3.9%	64	4.6%	38	2.7%	63	4.4%
Reckless Endangerment	8	0.5%	11	0.7%	9	0.6%	12	0.8%	22	1.6%	9	0.7%	13	0.9%
Sexual Assault	6	0.4%	10	0.7%	5	0.3%	19	1.3%	14	1.0%	10	0.7%	12	0.8%
Sexual Assault on a Minor	11	0.7%	8	0.5%	12	0.8%	14	1.0%	16	1.1%	16	1.2%	13	0.9%
Shoplifting	154	9.2%	106	7.1%	80	5.4%	102	7.1%	83	6.0%	75	5.4%	89	6.2%
Simple Assault	193	11.6%	176	11.8%	199	13.4%	213	14.8%	182	13.1%	176	12.7%	189	13.1%
Simple Assault Domestic	14	0.8%	17	1.1%	43	2.9%	57	4.0%	56	4.0%	51	3.7%	45	3.1%
Stolen Property	47	2.8%	26	1.7%	30	2.0%	25	1.7%	23	1.6%	23	1.7%	25	1.8%
Technical Violations	14	0.8%	10	0.7%	6	0.4%	1	0.1%	5	0.4%	10	0.7%	6	0.4%
Unlawful Mischief	201	12.1%	158	10.6%	211	14.2%	164	11.4%	179	12.8%	171	12.4%	177	12.3%
Unlawful Trespass	59	3.5%	46	3.1%	54	3.6%	43	3.0%	49	3.5%	44	3.2%	47	3.3%
Violation Conditions of Release	21	1.3%	22	1.5%	30	2.0%	28	1.9%	10	0.7%	20	1.4%	22	1.5%
Weapons at School	15	0.9%	16	1.1%	15	1.0%	11	0.8%	19	1.4%	15	1.1%	15	1.1%
Missing/Unknown	7	0.4%	4	0.3%	5	0.3%	1	0.1%	10	0.7%	0	0.0%	4	0.3%
Total	1,667	100.0%	1,495	100.0%	1,484	100.0%	1,439	100.0%	1,394	100.0%	1,383	100.0%	1,439	100.0%

* Based on the number of charges, NOT the number of people charged.

**TABLE 1.8: VERMONT STATEWIDE JUVENILE DELINQUENCY CASES
ORIGINAL CHARGE CATEGORY *
BY AGE WHEN COMPLAINT WAS FILED = 16-17, FY01-FY06**

Original Charge Category	FY01		FY02		FY03		FY04		FY05		FY06		5 Year Average FY02-FY06	
	N	%	N	%	N	%	N	%	N	%	N	%	N	%
Alcohol Possession/Furnishing	71	15.7%	35	10.2%	34	9.8%	31	8.0%	27	7.7%	38	9.3%	33	9.0%
Arson	0	0.0%	3	0.9%	1	0.3%	2	0.5%	3	0.9%	2	0.5%	2	0.6%
Burglary	21	4.6%	15	4.4%	22	6.3%	25	6.4%	24	6.8%	41	10.0%	25	6.9%
C&N	2	0.4%	1	0.3%	2	0.6%	4	1.0%	1	0.3%	4	1.0%	2	0.7%
Disorderly Conduct	39	8.6%	33	9.6%	22	6.3%	42	10.8%	34	9.7%	25	6.1%	31	8.5%
False Alarms	4	0.9%	0	0.0%	3	0.9%	2	0.5%	1	0.3%	1	0.2%	1	0.4%
Forgery/Counterfeiting	4	0.9%	6	1.7%	0	0.0%	9	2.3%	2	0.6%	1	0.2%	4	1.0%
Fraud	2	0.4%	0	0.0%	1	0.3%	3	0.8%	8	2.3%	10	2.4%	4	1.2%
Grand Larceny	6	1.3%	6	1.7%	15	4.3%	5	1.3%	5	1.4%	4	1.0%	7	1.9%
L&L with Child	3	0.7%	3	0.9%	2	0.6%	0	0.0%	5	1.4%	9	2.2%	4	1.0%
Lascivious Conduct	5	1.1%	1	0.3%	1	0.3%	0	0.0%	2	0.6%	4	1.0%	2	0.4%
Lewdness	0	0.0%	2	0.6%	2	0.6%	0	0.0%	0	0.0%	1	0.2%	1	0.3%
Misc. Title 13	42	9.3%	29	8.4%	24	6.9%	24	6.2%	25	7.1%	27	6.6%	26	7.0%
Misc. Title 18 (Drugs)	1	0.2%	11	3.2%	4	1.1%	10	2.6%	4	1.1%	5	1.2%	7	1.8%
Misc. Title 23 (DMV)	5	1.1%	4	1.2%	2	0.6%	5	1.3%	4	1.1%	4	1.0%	4	1.0%
Operating Without Owner's Consent	12	2.6%	12	3.5%	10	2.9%	9	2.3%	12	3.4%	12	2.9%	11	3.0%
Petit Larceny	16	3.5%	18	5.2%	12	3.4%	27	7.0%	19	5.4%	13	3.2%	18	4.8%
Possession Marijuana	25	5.5%	27	7.8%	26	7.5%	20	5.2%	16	4.5%	23	5.6%	22	6.1%
Reckless Endangerment	2	0.4%	4	1.2%	1	0.3%	2	0.5%	1	0.3%	4	1.0%	2	0.7%
Sexual Assault	1	0.2%	0	0.0%	2	0.6%	0	0.0%	3	0.9%	1	0.2%	1	0.3%
Sexual Assault on a Minor	5	1.1%	1	0.3%	2	0.6%	1	0.3%	3	0.9%	2	0.5%	2	0.5%
Shoplifting	24	5.3%	20	5.8%	24	6.9%	17	4.4%	13	3.7%	9	2.2%	17	4.5%
Simple Assault	56	12.4%	37	10.8%	34	9.8%	49	12.6%	52	14.8%	41	10.0%	43	11.6%
Simple Assault Domestic	9	2.0%	10	2.9%	18	5.2%	17	4.4%	17	4.8%	19	4.6%	16	4.4%
Stolen Property	11	2.4%	5	1.5%	6	1.7%	7	1.8%	11	3.1%	7	1.7%	7	2.0%
Technical Violations	4	0.9%	3	0.9%	2	0.6%	0	0.0%	1	0.3%	17	4.2%	5	1.2%
Unlawful Mischief	39	8.6%	30	8.7%	49	14.1%	40	10.3%	35	9.9%	35	8.6%	38	10.3%
Unlawful Trespass	20	4.4%	8	2.3%	20	5.7%	13	3.4%	6	1.7%	18	4.4%	13	3.5%
Violation Conditions of Release	20	4.4%	17	4.9%	6	1.7%	23	5.9%	16	4.5%	21	5.1%	17	4.5%
Weapons at School	3	0.7%	2	0.6%	1	0.3%	1	0.3%	1	0.3%	10	2.4%	3	0.8%
Missing/Unknown	1	0.2%	1	0.3%	0	0.0%	0	0.0%	1	0.3%	1	0.2%	1	0.2%
Total	453	100.0%	344	100.0%	348	100.0%	388	100.0%	352	100.0%	409	100.0%	368	100.0%

* Based on the number of charges, NOT the number of people charged.

**TABLE 1.9: VERMONT STATEWIDE JUVENILE DELINQUENCY CASES
ORIGINAL CHARGE CATEGORY *
BY AGE WHEN COMPLAINT WAS FILED = 18-20, FY01-FY06**

Original Charge Category	FY01		FY02		FY03		FY04		FY05		FY06		5 Year Average FY02-FY06	
	N	%	N	%	N	%	N	%	N	%	N	%	N	%
Alcohol Possession/Furnishing	0	0.0%	0	0.0%	0	0.0%	1	25.0%	1	12.5%	0	0.0%	0.40	13.3%
Arson	0	0.0%	0	0.0%	0	0.0%	0	0.0%	0	0.0%	0	0.0%	0.00	0.0%
Burglary	0	0.0%	0	0.0%	0	0.0%	0	0.0%	0	0.0%	0	0.0%	0.00	0.0%
C&N	0	0.0%	0	0.0%	0	0.0%	0	0.0%	0	0.0%	0	0.0%	0.00	0.0%
Disorderly Conduct	0	0.0%	1	50.0%	0	0.0%	0	0.0%	0	0.0%	0	0.0%	0.20	6.7%
False Alarms	0	0.0%	0	0.0%	0	0.0%	0	0.0%	0	0.0%	0	0.0%	0.00	0.0%
Forgery/Counterfeiting	0	0.0%	0	0.0%	0	0.0%	0	0.0%	0	0.0%	0	0.0%	0.00	0.0%
Fraud	0	0.0%	0	0.0%	0	0.0%	0	0.0%	1	12.5%	0	0.0%	0.20	6.7%
Grand Larceny	0	0.0%	0	0.0%	0	0.0%	0	0.0%	0	0.0%	0	0.0%	0.00	0.0%
L&L with Child	0	0.0%	0	0.0%	0	0.0%	0	0.0%	0	0.0%	0	0.0%	0.00	0.0%
Lascivious Conduct	0	0.0%	0	0.0%	0	0.0%	0	0.0%	0	0.0%	0	0.0%	0.00	0.0%
Lewdness	0	0.0%	0	0.0%	0	0.0%	0	0.0%	0	0.0%	0	0.0%	0.00	0.0%
Misc. Title 13	0	0.0%	0	0.0%	0	0.0%	1	25.0%	0	0.0%	0	0.0%	0.20	6.7%
Misc. Title 18 (Drugs)	0	0.0%	0	0.0%	0	0.0%	0	0.0%	1	12.5%	0	0.0%	0.20	6.7%
Misc. Title 23 (DMV)	0	0.0%	0	0.0%	0	0.0%	0	0.0%	0	0.0%	0	0.0%	0.00	0.0%
Operating Without Owner's Consent	0	0.0%	0	0.0%	0	0.0%	0	0.0%	0	0.0%	0	0.0%	0.00	0.0%
Petit Larceny	0	0.0%	0	0.0%	0	0.0%	0	0.0%	0	0.0%	0	0.0%	0.00	0.0%
Possession Marijuana	0	0.0%	0	0.0%	0	0.0%	0	0.0%	2	25.0%	0	0.0%	0.40	13.3%
Reckless Endangerment	0	0.0%	0	0.0%	0	0.0%	0	0.0%	0	0.0%	0	0.0%	0.00	0.0%
Sexual Assault	0	0.0%	0	0.0%	0	0.0%	0	0.0%	0	0.0%	0	0.0%	0.00	0.0%
Sexual Assault on a Minor	2	100.0%	0	0.0%	0	0.0%	0	0.0%	1	12.5%	0	0.0%	0.20	6.7%
Shoplifting	0	0.0%	1	50.0%	0	0.0%	0	0.0%	0	0.0%	0	0.0%	0.20	6.7%
Simple Assault	0	0.0%	0	0.0%	0	0.0%	0	0.0%	1	12.5%	1	100.0%	0.40	13.3%
Simple Assault Domestic	0	0.0%	0	0.0%	0	0.0%	0	0.0%	0	0.0%	0	0.0%	0.00	0.0%
Stolen Property	0	0.0%	0	0.0%	0	0.0%	0	0.0%	1	12.5%	0	0.0%	0.20	6.7%
Technical Violations	0	0.0%	0	0.0%	0	0.0%	0	0.0%	0	0.0%	0	0.0%	0.00	0.0%
Unlawful Mischief	0	0.0%	0	0.0%	0	0.0%	0	0.0%	0	0.0%	0	0.0%	0.00	0.0%
Unlawful Trespass	0	0.0%	0	0.0%	0	0.0%	0	0.0%	0	0.0%	0	0.0%	0.00	0.0%
Violation Conditions of Release	0	0.0%	0	0.0%	0	0.0%	2	50.0%	0	0.0%	0	0.0%	0.40	13.3%
Weapons at School	0	0.0%	0	0.0%	0	0.0%	0	0.0%	0	0.0%	0	0.0%	0.00	0.0%
Missing/Unknown	0	0.0%	0	0.0%	0	0.0%	0	0.0%	0	0.0%	0	0.0%	0.00	0.0%
Total	2	100.0%	2	100.0%	0	0.0%	4	100.0%	8	100.0%	1	100.0%	3.00	0.0%

* Based on the number of charges, NOT the number of people charged.

**TABLE 1.10: VERMONT STATEWIDE JUVENILE DELINQUENCY CASES
ORIGINAL CHARGE CATEGORY *
BY SEX = MALE, FY01-FY06**

Original Charge Category	FY01		FY02		FY03		FY04		FY05		FY06		5 Year Average FY021-FY06	
	N	%	N	%	N	%	N	%	N	%	N	%	N	%
Alcohol Possession/Furnishing	125	10.6%	101	9.6%	87	7.8%	107	8.9%	100	8.4%	112	8.8%	101	8.7%
Arson	2	0.2%	9	0.9%	11	1.0%	10	0.8%	9	0.8%	10	0.8%	10	0.8%
Burglary	91	7.7%	72	6.9%	74	6.6%	82	6.8%	73	6.1%	118	9.2%	84	7.2%
C&N	4	0.3%	9	0.9%	5	0.4%	6	0.5%	6	0.5%	12	0.9%	8	0.7%
Disorderly Conduct	78	6.6%	84	8.0%	74	6.6%	85	7.1%	88	7.4%	117	9.2%	90	7.7%
False Alarms	9	0.8%	11	1.0%	7	0.6%	6	0.5%	8	0.7%	5	0.4%	7	0.6%
Forgery/Counterfeiting	5	0.4%	5	0.5%	2	0.2%	8	0.7%	3	0.3%	0	0.0%	4	0.3%
Fraud	0	0.0%	0	0.0%	5	0.4%	3	0.2%	7	0.6%	7	0.5%	4	0.4%
Grand Larceny	21	1.8%	21	2.0%	34	3.0%	16	1.3%	18	1.5%	27	2.1%	23	2.0%
L&L with Child	18	1.5%	16	1.5%	11	1.0%	21	1.7%	28	2.3%	30	2.4%	21	1.8%
Lascivious Conduct	28	2.4%	15	1.4%	19	1.7%	20	1.7%	26	2.2%	18	1.4%	20	1.7%
Lewdness	1	0.1%	1	0.1%	4	0.4%	1	0.1%	2	0.2%	2	0.2%	2	0.2%
Misc. Title 13	72	6.1%	61	5.8%	56	5.0%	64	5.3%	67	5.6%	64	5.0%	62	5.3%
Misc. Title 18 (Drugs)	16	1.4%	13	1.2%	13	1.2%	17	1.4%	13	1.1%	14	1.1%	14	1.2%
Misc. Title 23 (DMV)	8	0.7%	11	1.0%	17	1.5%	4	0.3%	10	0.8%	17	1.3%	12	1.0%
Operating Without Owner's Consent	27	2.3%	51	4.9%	24	2.1%	26	2.2%	31	2.6%	39	3.1%	34	2.9%
Petit Larceny	108	9.1%	87	8.3%	80	7.1%	95	7.9%	65	5.5%	63	4.9%	78	6.7%
Possession Marijuana	66	5.6%	65	6.2%	64	5.7%	50	4.2%	64	5.4%	52	4.1%	59	5.1%
Reckless Endangerment	4	0.3%	12	1.1%	9	0.8%	13	1.1%	22	1.8%	11	0.9%	13	1.1%
Sexual Assault	5	0.4%	6	0.6%	3	0.3%	10	0.8%	17	1.4%	11	0.9%	9	0.8%
Sexual Assault on a Minor	10	0.8%	6	0.6%	10	0.9%	12	1.0%	17	1.4%	16	1.3%	12	1.0%
Shoplifting	63	5.3%	50	4.8%	42	3.7%	43	3.6%	28	2.3%	36	2.8%	40	3.4%
Simple Assault	114	9.6%	102	9.7%	135	12.0%	164	13.7%	144	12.1%	135	10.6%	136	11.6%
Simple Assault Domestic	11	0.9%	13	1.2%	35	3.1%	44	3.7%	38	3.2%	39	3.1%	34	2.9%
Stolen Property	42	3.6%	24	2.3%	25	2.2%	27	2.2%	27	2.3%	27	2.1%	26	2.2%
Technical Violations	9	0.8%	10	1.0%	6	0.5%	0	0.0%	5	0.4%	26	2.0%	9	0.8%
Unlawful Mischief	168	14.2%	128	12.2%	175	15.6%	175	14.6%	184	15.4%	169	13.2%	166	14.2%
Unlawful Trespass	46	3.9%	32	3.0%	48	4.3%	38	3.2%	44	3.7%	48	3.8%	42	3.6%
Violation Conditions of Release	16	1.4%	18	1.7%	31	2.8%	43	3.6%	22	1.8%	32	2.5%	29	2.5%
Weapons at School	15	1.3%	13	1.2%	11	1.0%	11	0.9%	16	1.3%	18	1.4%	14	1.2%
Missing/Unknown	0	0.0%	4	0.4%	4	0.4%	0	0.0%	10	0.8%	1	0.1%	4	0.3%
Total	1,182	100.0%	1,050	100.0%	1,121	100.0%	1,201	100.0%	1,192	100.0%	1,276	100.0%	1,168	100.0%

* Based on the number of charges, NOT the number of people charged.

TABLE 1.11 VERMONT STATEWIDE JUVENILE DELINQUENCY CASES
ORIGINAL CHARGE CATEGORY *
BY SEX = FEMALE, FY01-FY06

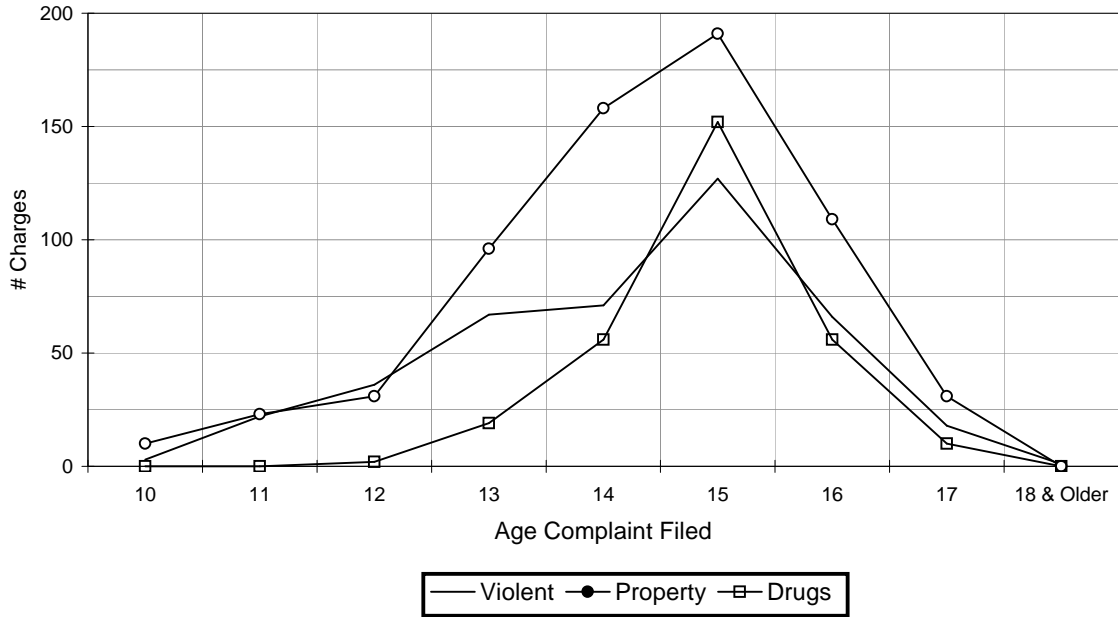
Original Charge Category	FY01		FY02		FY03		FY04		FY05		FY06		5 Year Average FY02-FY06	
	N	%	N	%	N	%	N	%	N	%	N	%	N	%
Alcohol Possession/Furnishing	94	20.2%	51	16.5%	63	17.8%	74	15.0%	109	21.3%	100	21.0%	79	18.5%
Arson	1	0.2%	0	0.0%	0	0.0%	1	0.2%	1	0.2%	3	0.6%	1	0.2%
Burglary	9	1.9%	6	1.9%	8	2.3%	11	2.2%	12	2.3%	8	1.7%	9	2.1%
C&N	0	0.0%	0	0.0%	4	1.1%	3	0.6%	0	0.0%	4	0.8%	2	0.5%
Disorderly Conduct	48	10.3%	30	9.7%	31	8.8%	70	14.2%	34	6.7%	39	8.2%	41	9.5%
False Alarms	14	3.0%	2	0.6%	4	1.1%	12	2.4%	9	1.8%	4	0.8%	6	1.4%
Forgery/Counterfeiting	7	1.5%	2	0.6%	1	0.3%	2	0.4%	2	0.4%	2	0.4%	2	0.4%
Fraud	2	0.4%	1	0.3%	1	0.3%	7	1.4%	5	1.0%	6	1.3%	4	0.9%
Grand Larceny	2	0.4%	0	0.0%	5	1.4%	5	1.0%	6	1.2%	2	0.4%	4	0.8%
L&L with Child	3	0.6%	0	0.0%	0	0.0%	0	0.0%	3	0.6%	4	0.8%	1	0.3%
Lascivious Conduct	0	0.0%	1	0.3%	0	0.0%	1	0.2%	2	0.4%	0	0.0%	1	0.2%
Lewdness	0	0.0%	0	0.0%	0	0.0%	0	0.0%	0	0.0%	0	0.0%	0	0.0%
Misc. Title 13	37	7.9%	28	9.1%	18	5.1%	36	7.3%	37	7.2%	45	9.4%	33	7.6%
Misc. Title 18 (Drugs)	1	0.2%	4	1.3%	3	0.8%	7	1.4%	4	0.8%	3	0.6%	4	1.0%
Misc. Title 23 (DMV)	2	0.4%	3	1.0%	1	0.3%	3	0.6%	5	1.0%	1	0.2%	3	0.6%
Operating Without Owner's Consent	9	1.9%	6	1.9%	10	2.8%	5	1.0%	14	2.7%	20	4.2%	11	2.6%
Petit Larceny	13	2.8%	14	4.5%	21	5.9%	19	3.8%	15	2.9%	12	2.5%	16	3.8%
Possession Marijuana	13	2.8%	18	5.8%	18	5.1%	23	4.7%	15	2.9%	9	1.9%	17	3.9%
Reckless Endangerment	0	0.0%	0	0.0%	0	0.0%	0	0.0%	1	0.2%	2	0.4%	1	0.1%
Sexual Assault	0	0.0%	0	0.0%	1	0.3%	0	0.0%	0	0.0%	0	0.0%	0	0.0%
Sexual Assault on a Minor	1	0.2%	0	0.0%	1	0.3%	2	0.4%	3	0.6%	1	0.2%	1	0.3%
Shoplifting	71	15.2%	38	12.3%	44	12.5%	70	14.2%	67	13.1%	47	9.9%	53	12.4%
Simple Assault	77	16.5%	66	21.4%	58	16.4%	80	16.2%	84	16.4%	74	15.5%	72	16.9%
Simple Assault Domestic	4	0.9%	2	0.6%	16	4.5%	21	4.3%	30	5.9%	30	6.3%	20	4.6%
Stolen Property	9	1.9%	2	0.6%	6	1.7%	5	1.0%	8	1.6%	2	0.4%	5	1.1%
Technical Violations	5	1.1%	0	0.0%	1	0.3%	1	0.2%	1	0.2%	0	0.0%	1	0.1%
Unlawful Mischief	21	4.5%	14	4.5%	22	6.2%	12	2.4%	24	4.7%	32	6.7%	21	4.9%
Unlawful Trespass	10	2.1%	8	2.6%	11	3.1%	15	3.0%	11	2.2%	13	2.7%	12	2.7%
Violation Conditions of Release	6	1.3%	10	3.2%	3	0.8%	8	1.6%	4	0.8%	9	1.9%	7	1.6%
Weapons at School	2	0.4%	2	0.6%	1	0.3%	0	0.0%	4	0.8%	5	1.0%	2	0.6%
Missing/Unknown	5	1.1%	1	0.3%	1	0.3%	1	0.2%	1	0.2%	0	0.0%	1	0.2%
Total	466	100.0%	309	100.0%	353	100.0%	494	100.0%	511	100.0%	477	100.0%	429	100.0%

* Based on the number of charges, NOT the number of people charged.

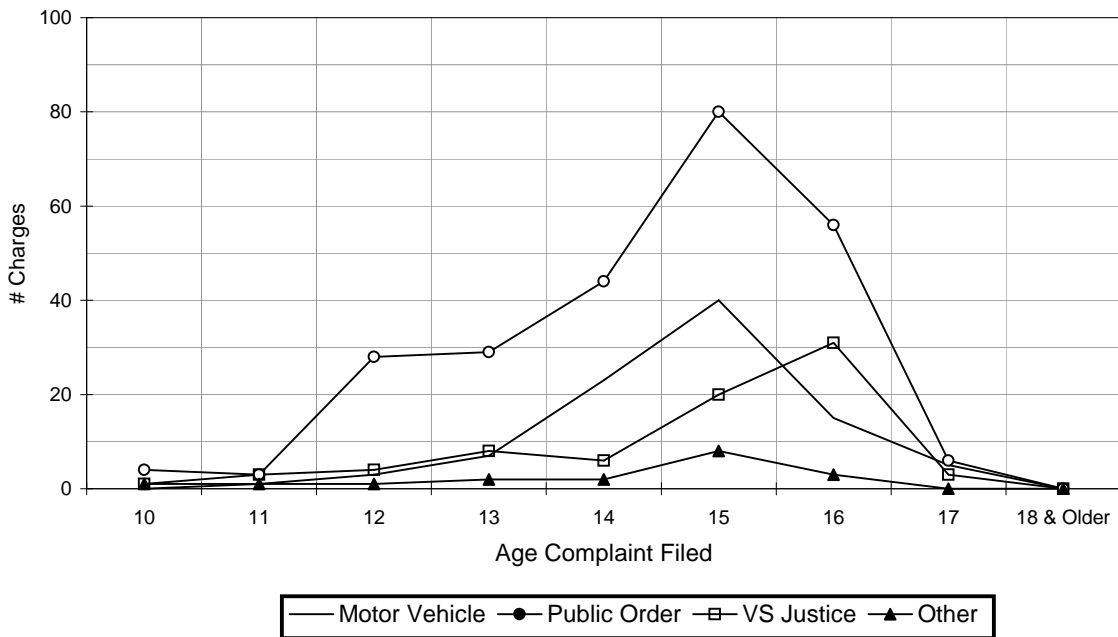
**TABLE 1.12: VERMONT STATEWIDE JUVENILE DELINQUENCY CHARGES
ORIGINAL OFFENSE CATEGORY
BY AGE WHEN COMPLAINT WAS FILED, FY01-FY06**

Age When Complaint Was Filed	FY01								FY02							
	Violent	Property	Motor Vehicle	Drugs	Public Order	VS Justice	Other	Total	Violent	Property	Motor Vehicle	Drugs	Public Order	VS Justice	Other	Total
10	9	14	0	1	5	0	0	29	1	10	1	0	3	0	0	15
11	19	23	0	1	6	0	1	50	15	26	0	1	4	0	0	46
12	36	61	0	8	21	0	0	126	28	43	7	8	20	1	0	107
13	66	130	3	29	25	5	5	263	61	80	4	13	29	4	2	193
14	76	211	17	89	56	13	0	462	87	154	17	82	49	12	4	405
15	120	297	27	193	62	28	10	737	107	268	63	179	85	25	2	729
16	90	128	19	89	48	23	0	397	56	97	15	62	37	17	3	287
17	14	17	0	8	7	8	2	56	13	16	2	11	7	6	2	57
18 & Older	2	0	0	0	0	0	0	2	0	1	0	0	1	0	0	2
Missing/Unknown	4	4	1	2	4	0	1	16	1	4	1	1	1	0	0	8
Total	436	885	67	420	234	77	19	2,138	369	699	110	357	236	65	13	1,849
Age When Complaint Was Filed	FY03								FY04							
	Violent	Property	Motor Vehicle	Drugs	Public Order	VS Justice	Other	Total	Violent	Property	Motor Vehicle	Drugs	Public Order	VS Justice	Other	Total
10	8	11	0	0	6	0	0	25	17	8	0	1	4	6	0	36
11	13	19	0	0	9	1	0	42	30	14	0	1	4	2	1	52
12	28	53	2	0	21	0	0	104	55	49	0	2	23	2	0	131
13	71	103	5	26	27	6	1	239	80	124	3	15	32	9	1	264
14	91	191	11	65	55	7	4	424	97	140	11	63	51	14	0	376
15	124	248	41	151	55	28	3	650	105	211	24	148	73	17	2	580
16	51	128	10	51	28	13	1	282	55	122	10	42	38	22	2	291
17	12	25	4	13	8	2	2	66	19	29	8	19	14	8	0	97
18 & Older	0	0	0	0	0	0	0	0	0	0	0	1	0	3	0	4
Missing/Unknown	0	0	0	1	0	0	1	2	4	3	0	3	3	0	0	13
Total	398	778	73	307	209	57	12	1,834	462	700	56	295	242	83	6	1,844
Age When Complaint Was Filed	FY05								FY06							
	Violent	Property	Motor Vehicle	Drugs	Public Order	VS Justice	Other	Total	Violent	Property	Motor Vehicle	Drugs	Public Order	VS Justice	Other	Total
10	5	7	0	0	0	3	0	15	3	10	0	0	4	1	1	19
11	24	30	1	0	8	2	2	67	22	23	1	0	3	3	1	53
12	37	49	3	8	19	3	0	119	36	31	3	2	28	4	1	105
13	80	122	5	27	36	10	6	286	67	96	7	19	29	8	2	228
14	112	128	13	74	50	12	3	392	71	158	23	56	44	6	2	360
15	95	174	29	154	44	7	12	515	127	191	40	152	80	20	8	618
16	70	98	13	40	24	16	1	262	66	109	15	56	56	31	3	336
17	23	29	4	7	16	9	2	90	18	31	5	10	6	3	0	73
18 & Older	2	2	0	4	0	0	0	8	1	0	0	0	0	0	0	1
Missing/Unknown	0	0	0	2	1	0	0	3	0	0	0	2	0	0	0	2
Total	448	639	68	316	198	62	26	1,757	411	649	94	297	250	76	18	1,795

OFFENSE BY COMPLAINT FILE AGE Juvenile Delinquency Charges FY06



OFFENSE BY COMPLAINT FILE AGE Juvenile Delinquency Charges FY06



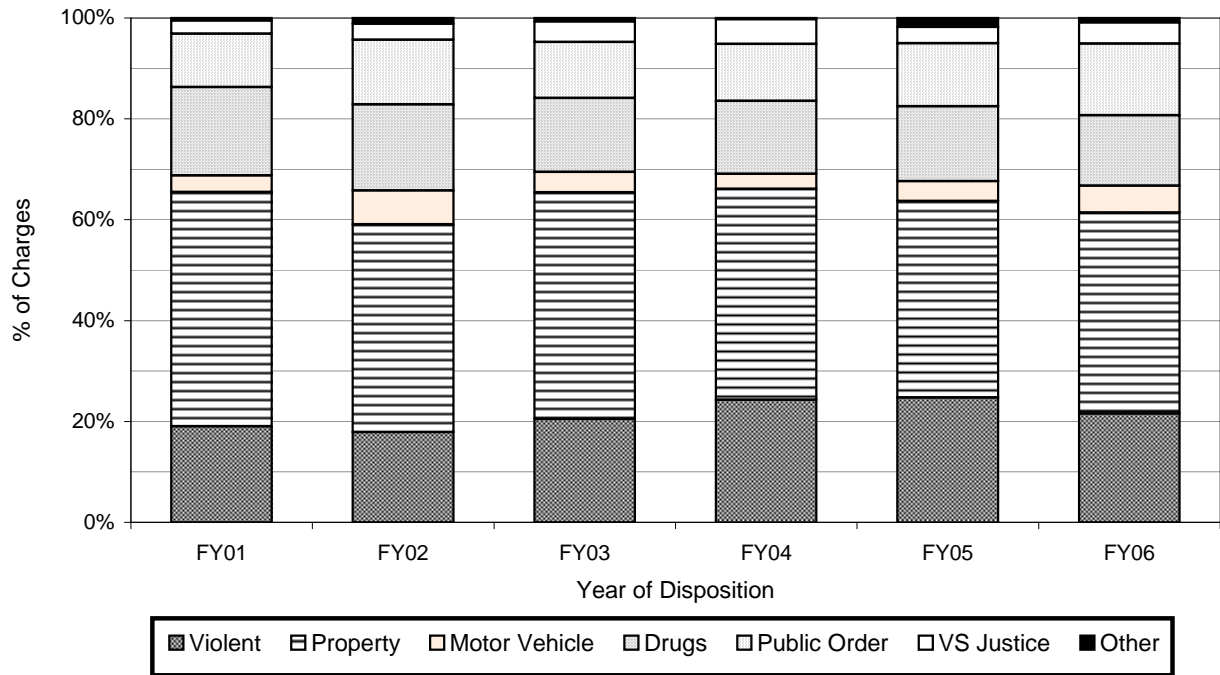
**TABLE 1.13: VERMONT STATEWIDE JUVENILE DELINQUENCY CHARGES
SUMMARY OF ORIGINAL OFFENSE CATEGORY FOR MALES
BY AGE WHEN COMPLAINT WAS FILED, FY01 - FY06**

	Age When Complaint was Filed										Total	
	10	11	12	13	14	15	16	17	18 & Older	Missing/Unknown		
FY01												
Violent	8	7	18	30	39	71	45	6	0	1	225	
Property	7	14	42	101	121	175	77	10	0	2	549	
Motor Vehicle	0	0	0	2	9	20	8	0	0	0	39	
Drugs	1	0	5	17	42	87	50	5	0	0	207	
Public Order	4	5	16	12	28	34	24	2	0	0	125	
VS Justice	0	0	0	2	2	13	13	1	0	0	31	
Other	0	0	0	0	0	6	0	0	0	0	6	
Total	20	26	81	164	241	406	217	24	0	3	1,182	
FY02												
Violent	0	11	23	30	42	54	23	4	0	1	188	
Property	8	11	25	54	98	160	62	10	1	3	432	
Motor Vehicle	1	0	3	2	12	41	10	1	0	1	71	
Drugs	0	0	4	8	49	89	29	0	0	0	179	
Public Order	2	2	11	14	35	51	18	1	1	0	135	
VS Justice	0	0	0	3	7	14	8	1	0	0	33	
Other	0	0	0	2	4	2	3	1	0	0	12	
Total	11	24	66	113	247	411	153	18	2	5	1,050	
FY03												
Violent	7	10	18	50	46	68	27	4	0	0	230	
Property	9	16	29	74	114	167	79	15	0	0	503	
Motor Vehicle	0	0	0	1	8	25	8	4	0	0	46	
Drugs	0	0	0	17	26	82	31	7	0	1	164	
Public Order	5	6	15	12	32	30	19	6	0	0	125	
VS Justice	0	1	0	5	5	22	11	1	0	0	45	
Other	0	0	0	1	3	3	1	0	0	0	8	
Total	21	33	62	160	234	397	176	37	0	1	1,121	
FY04												
Violent	14	14	39	64	56	65	26	11	0	3	292	
Property	5	13	34	89	97	157	87	18	0	2	502	
Motor Vehicle	0	0	0	1	7	18	4	6	0	0	36	
Drugs	1	1	2	12	32	79	29	17	1	0	174	
Public Order	3	3	14	25	29	39	17	5	0	0	135	
VS Justice	6	0	2	7	12	11	12	6	3	0	59	
Other	0	1	0	0	0	1	1	0	0	0	3	
Total	29	32	91	198	233	370	176	63	4	5	1,201	
FY05												
Violent	5	21	30	59	74	58	36	11	1	0	295	
Property	7	27	29	92	89	130	69	19	2	0	464	
Motor Vehicle	0	1	3	5	10	22	5	1	0	0	47	
Drugs	0	0	7	12	37	85	28	2	4	2	177	
Public Order	0	6	14	29	40	36	15	9	0	0	149	
VS Justice	2	2	2	5	4	7	13	4	0	0	39	
Other	0	2	0	5	2	10	1	1	0	0	21	
Total	14	59	85	207	256	348	167	47	7	2	1,192	
FY06												
Violent	2	20	35	44	51	80	31	11	1	0	275	
Property	9	14	25	82	119	155	83	22	0	0	509	
Motor Vehicle	0	1	1	5	12	35	11	3	0	0	68	
Drugs	0	0	1	9	27	99	31	9	0	2	178	
Public Order	1	3	21	22	28	52	50	4	0	0	181	
VS Justice	1	3	1	6	2	14	25	2	0	0	54	
Other	1	1	1	1	0	5	2	0	0	0	11	
Total	14	42	85	169	239	440	233	51	1	2	1,276	

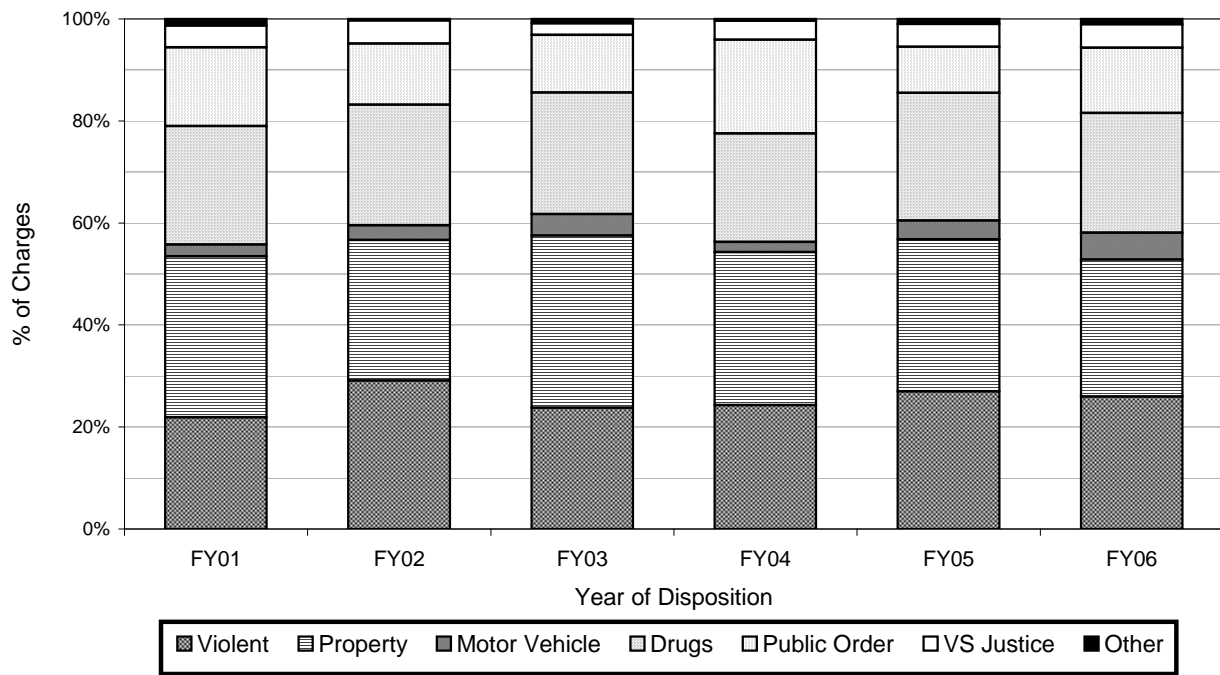
**TABLE 1.14: VERMONT STATEWIDE JUVENILE DELINQUENCY CHARGES
SUMMARY OF ORIGINAL OFFENSE CATEGORY FOR FEMALES
BY AGE WHEN COMPLAINT WAS FILED, FY01 - FY06**

	Age When Complaint was Filed										Total
	10	11	12	13	14	15	16	17	18 & Older	Missing/Unknown	
FY01											
Violent	1	3	6	20	9	28	29	6	0	0	102
Property	5	2	11	12	42	49	23	3	0	0	147
Motor Vehicle	0	0	0	0	4	3	4	0	0	0	11
Drugs	0	1	1	9	24	48	22	3	0	0	108
Public Order	1	0	5	9	17	17	18	4	0	1	72
VS Justice	0	0	0	3	2	6	6	3	0	0	20
Other	0	0	0	5	0	0	0	1	0	0	6
Total	7	6	23	58	98	151	102	20	0	1	466
FY02											
Violent	0	2	0	14	26	28	15	5	0	0	90
Property	0	4	10	5	23	31	11	1	0	0	85
Motor Vehicle	0	0	3	1	2	1	2	0	0	0	9
Drugs	0	1	1	2	18	34	14	3	0	0	73
Public Order	0	0	3	6	10	12	4	2	0	0	37
VS Justice	0	0	1	1	4	4	4	0	0	0	14
Other	0	0	0	0	0	0	0	1	0	0	1
Total	0	7	18	29	83	110	50	12	0	0	309
FY03											
Violent	0	1	3	7	30	26	12	5	0	0	84
Property	0	0	7	13	38	37	20	4	0	0	119
Motor Vehicle	0	0	1	1	3	10	0	0	0	0	15
Drugs	0	0	0	4	22	45	12	1	0	0	84
Public Order	0	1	1	5	11	16	5	1	0	0	40
VS Justice	0	0	0	1	5	1	1	1	0	0	8
Other	0	0	0	0	1	0	0	2	0	0	3
Total	0	2	12	30	106	139	50	14	0	0	353
FY04											
Violent	2	8	5	13	26	35	22	8	0	1	120
Property	1	1	7	27	35	44	24	9	0	0	148
Motor Vehicle	0	0	0	1	0	5	3	1	0	0	10
Drugs	0	0	0	3	26	60	11	2	0	3	105
Public Order	1	1	7	7	19	27	21	8	0	0	91
VS Justice	0	2	0	1	1	4	8	2	0	0	18
Other	0	0	0	1	0	0	1	0	0	0	2
Total	4	12	19	53	107	175	90	30	0	4	494
FY05											
Violent	0	3	6	19	37	36	28	8	1	0	138
Property	0	3	19	18	36	41	26	9	0	0	152
Motor Vehicle	0	0	0	0	2	7	7	3	0	0	19
Drugs	0	0	1	14	32	66	10	5	0	0	128
Public Order	0	2	5	6	10	7	8	7	0	1	46
VS Justice	1	0	1	5	8	0	3	5	0	0	23
Other	0	0	0	1	1	2	0	1	0	0	5
Total	1	8	32	63	126	159	82	38	1	1	511
FY06											
Violent	1	2	1	19	18	45	32	6	0	0	124
Property	1	7	6	12	35	35	23	9	0	0	128
Motor Vehicle	0	0	2	2	11	4	4	2	0	0	25
Drugs	0	0	1	10	27	49	24	1	0	0	112
Public Order	2	0	7	5	15	25	5	2	0	0	61
VS Justice	0	0	3	2	4	6	6	1	0	0	22
Other	0	0	0	1	2	2	0	0	0	0	5
Total	4	9	20	51	112	166	94	21	0	0	477

Juvenile Delinquency Charges Original Offense Category - Males



Juvenile Delinquency Charges Original Offense Category - Females



**TABLE 1.15 VERMONT STATEWIDE JUVENILE DELINQUENCY CASES
ORIGINAL CHARGE CATEGORY * BY COUNTY, FY01**

Original Charge Category	County **														Total
	Add	Ben	Cal	Chi	Ess	Fra	Gra	Lam	Ora	Orl	Rut	Was	Wdh	Wdr	
Alcohol Possession/Furnishing	32	26	8	77	0	19	0	4	7	7	38	17	34	27	296
Arson	1	0	0	0	0	0	0	0	0	0	1	0	0	1	3
Burglary	5	17	7	12	3	14	2	7	4	4	9	4	17	12	117
C&N	0	0	1	4	0	0	0	0	0	0	2	1	0	0	8
Disorderly Conduct	3	9	2	22	1	16	0	3	2	7	28	6	14	29	142
False Alarms	0	0	1	4	0	4	0	1	1	0	4	6	5	2	28
Forgery/Counterfeiting	0	2	0	8	0	2	0	0	0	3	1	1	1	0	18
Fraud	0	0	0	0	0	0	0	0	0	0	0	0	0	2	2
Grand Larceny	1	3	1	5	0	1	0	2	1	1	4	2	5	4	30
L&L with Child	6	1	2	7	0	0	0	0	1	0	1	6	1	2	27
Lascivious Conduct	0	4	3	29	0	2	0	3	0	0	0	1	1	5	48
Lewdness	0	0	0	1	0	0	0	0	0	0	0	0	0	1	2
Misc. Title 13	3	16	3	34	0	12	0	6	1	2	11	3	13	26	130
Misc. Title 18 (Drugs)	2	0	1	11	0	0	0	0	0	0	1	5	2	2	24
Misc. Title 23 (DMV)	1	0	1	6	0	2	0	0	0	0	1	1	0	1	13
Operating Without Owner's Consent	1	4	2	9	0	4	0	1	0	1	3	6	4	11	46
Petit Larceny	6	12	14	34	0	6	0	11	2	4	4	23	19	14	149
Possession Marijuana	6	11	4	13	0	8	0	3	2	9	4	11	19	10	100
Reckless Endangerment	0	1	0	7	0	0	0	0	0	0	0	1	2	0	11
Sexual Assault	0	0	0	3	0	0	0	0	0	0	2	0	1	1	7
Sexual Assault on a Minor	1	1	0	8	0	1	0	2	2	0	0	3	0	0	18
Shoplifting	14	12	5	59	0	6	0	7	2	2	17	28	19	7	178
Simple Assault	11	22	12	72	2	21	0	5	5	7	34	14	17	28	250
Simple Assault Domestic	2	0	0	8	0	0	0	0	0	2	1	3	6	1	23
Stolen Property	0	6	2	11	0	4	0	4	0	1	3	1	18	9	59
Technical Violations	0	0	3	10	0	0	0	0	0	1	0	2	0	4	20
Unlawful Mischief	8	16	16	45	5	19	3	9	11	10	32	14	17	37	242
Unlawful Trespass	0	7	1	20	0	13	2	2	0	4	6	6	7	12	80
Violation Conditions of Release	2	5	4	19	0	5	0	0	0	0	3	1	2	0	41
Weapons at School	0	2	0	2	0	0	0	1	0	1	4	2	5	2	19
Missing/Unknown	0	0	0	2	0	0	0	0	0	0	0	1	0	4	7
Total	105	177	93	542	11	159	7	71	41	66	214	169	229	254	2,138

* Based on the number of charges, NOT the number of people charged.
** Add=Addison, Ben=Bennington, Cal=Caledonia, Chi=Chittenden, Ess=Essex, Fra=Franklin, Gra=Grand Isle, Lam=Lamoille, Ora=Orange, Orl=Orleans, Rut=Rutland, Was=Washington, Wdh=Windham, Wdr=Windsor.

**TABLE 1.16 VERMONT STATEWIDE JUVENILE DELINQUENCY CASES
ORIGINAL CHARGE CATEGORY * BY COUNTY, FY02**

Original Charge Category	County **														Total
	Add	Ben	Cal	Chi	Ess	Fra	Gra	Lam	Ora	Orl	Rut	Was	Wdh	Wdr	
Shoplifting	6	15	10	29	0	7	0	4	5	1	19	9	18	5	128
Unlawful Mischief	12	16	12	43	1	15	3	4	12	7	10	13	21	21	190
Simple Assault	2	31	17	42	1	16	0	5	5	7	27	16	27	18	214
Petit Larceny	1	11	7	26	0	8	0	13	6	20	3	7	11	15	128
Burglary	1	11	3	20	4	3	1	8	4	9	11	3	15	8	101
Unlawful Trespass	4	1	1	14	0	3	2	3	1	4	4	2	5	10	54
Alcohol Possession/Furnishing	6	33	6	60	0	14	0	4	7	4	22	30	18	20	224
Disorderly Conduct	6	11	8	38	2	11	0	6	6	6	21	7	16	20	158
Possession Marijuana	15	13	4	20	0	10	0	8	2	5	3	13	6	5	104
Misc. Title 13	6	13	6	25	2	12	0	9	5	5	5	7	9	20	124
Stolen Property	0	3	2	6	0	4	0	2	0	5	2	2	2	3	31
Operating Without Owner's Consent	4	12	3	19	0	8	3	1	3	1	4	3	6	11	78
L&L with Child	4	0	0	1	0	0	0	1	5	1	5	2	2	1	22
Sexual Assault on a Minor	1	0	0	2	1	1	0	1	1	0	2	0	0	0	9
Violation Conditions of Release	6	7	0	10	0	7	0	2	0	4	0	2	0	1	39
Misc. Title 23 (DMV)	0	4	0	9	0	0	0	2	1	1	1	0	2	3	23
Grand Larceny	1	2	0	8	0	1	0	5	2	0	6	1	1	4	31
Weapons at School	0	1	0	2	0	2	0	0	1	1	0	0	2	10	19
Arson	1	0	1	1	0	1	0	0	2	3	1	0	0	2	12
Simple Assault Domestic	0	0	1	12	1	0	0	0	0	0	1	0	10	2	27
Lascivious Conduct	2	2	0	5	0	1	0	2	0	0	1	2	2	3	20
Forgery/Counterfeiting	3	0	0	5	0	2	0	0	0	1	1	0	0	0	12
Fraud	0	0	0	4	0	0	0	0	0	0	0	0	0	0	4
Sexual Assault	3	0	0	2	0	1	0	0	0	0	3	0	0	1	10
Reckless Endangerment	0	0	1	3	0	0	0	0	0	2	0	1	2	6	15
False Alarms	0	1	2	0	0	2	0	3	0	2	0	1	2	1	14
C&N	1	1	1	2	0	0	0	1	0	0	1	0	0	2	9
Misc. Title 18 (Drugs)	6	2	1	14	0	0	0	2	0	0	2	0	1	1	29
Lewdness	1	0	0	0	0	0	0	0	1	0	0	0	0	0	2
Technical Violations	0	4	0	1	0	0	0	0	3	0	4	1	0	0	13
Missing/Unknown	0	1	0	0	0	0	0	0	0	0	0	4	0	0	5
Total	92	195	86	423	12	129	9	86	72	89	159	126	178	193	1,849

* Based on the number of charges, NOT the number of people charged.

** Add=Addison, Ben=Bennington, Cal=Caledonia, Chi=Chittenden, Ess=Essex, Fra=Franklin, Gra=Grand Isle, Lam=Lamoille, Ora=Orange, Orl=Orleans, Rut=Rutland, Was=Washington, Wdh=Windham, Wdr=Windsor.

**TABLE 1.17 VERMONT STATEWIDE JUVENILE DELINQUENCY CASES
ORIGINAL CHARGE CATEGORY * BY COUNTY, FY03**

Original Charge Category	County **														Total
	Add	Ben	Cal	Chi	Ess	Fra	Gra	Lam	Ora	Orl	Rut	Was	Wdh	Wdr	
Alcohol Possession/Furnishing	7	38	5	16	0	12	0	5	4	18	28	11	22	12	178
Arson	0	0	2	0	0	2	0	1	1	0	0	1	3	2	12
Burglary	2	11	11	16	0	9	0	10	3	13	3	1	19	4	102
C&N	1	1	0	2	0	2	0	1	0	1	1	1	1	0	11
Disorderly Conduct	5	7	2	22	1	14	0	12	6	10	19	4	11	22	135
False Alarms	0	0	1	1	0	3	0	3	2	1	0	0	3	0	14
Forgery/Counterfeiting	0	0	0	4	0	0	0	1	0	0	0	0	1	1	7
Fraud	1	2	0	3	0	0	0	0	0	0	1	1	0	0	8
Grand Larceny	2	4	1	6	0	3	0	8	0	3	1	8	7	2	45
L&L with Child	0	3	0	12	0	0	0	0	1	0	2	4	2	0	24
Lascivious Conduct	1	6	1	2	0	3	2	0	1	0	0	0	0	7	23
Lewdness	1	0	1	1	0	0	0	0	1	1	0	0	0	0	5
Misc. Title 13	12	5	0	12	0	11	0	7	1	4	9	4	11	15	91
Misc. Title 18 (Drugs)	0	3	0	7	0	1	0	1	1	4	0	2	2	3	24
Misc. Title 23 (DMV)	2	6	0	1	0	0	0	1	0	1	5	1	1	1	19
Operating Without Owner's Consent	3	2	1	7	0	7	0	4	2	0	3	6	7	1	43
Petit Larceny	2	15	15	16	0	7	3	7	2	6	1	18	25	6	123
Possession Marijuana	19	9	5	19	0	6	0	4	3	6	3	12	10	9	105
Reckless Endangerment	0	3	0	1	0	0	0	0	0	1	1	0	0	4	10
Sexual Assault	0	0	0	3	0	0	0	1	0	0	1	0	0	2	7
Sexual Assault on a Minor	5	4	0	1	0	1	0	1	0	0	0	0	1	1	14
Shoplifting	6	17	2	15	0	10	0	8	1	10	17	9	5	4	104
Simple Assault	10	27	10	35	3	17	0	11	8	15	28	30	23	16	233
Simple Assault Domestic	0	7	4	11	1	4	0	1	2	2	7	10	2	10	61
Stolen Property	1	8	0	3	0	3	0	1	1	1	4	2	7	5	36
Technical Violations	0	2	0	0	0	0	0	0	1	1	2	2	1	0	9
Unlawful Mischief	5	11	12	57	1	35	1	13	6	26	16	17	44	16	260
Unlawful Trespass	1	8	2	16	0	6	0	4	3	6	11	2	10	5	74
Violation Conditions of Release	2	5	0	8	0	8	0	0	0	4	1	1	5	2	36
Weapons at School	0	2	0	1	0	0	0	0	2	1	2	1	5	2	16
Missing/Unknown	0	0	0	0	0	0	0	0	0	0	0	5	0	0	5
Total	88	206	75	298	6	164	6	105	52	135	166	153	228	152	1,834

* Based on the number of charges, NOT the number of people charged.

** Add=Addison, Ben=Bennington, Cal=Caledonia, Chi=Chittenden, Ess=Essex, Fra=Franklin, Gra=Grand Isle, Lam=Lamoille, Ora=Orange, Orl=Orleans, Rut=Rutland, Was=Washington, Wdh=Windham, Wdr=Windsor.

**TABLE 1.18 VERMONT STATEWIDE JUVENILE DELINQUENCY CASES
ORIGINAL CHARGE CATEGORY * BY COUNTY, FY04**

Original Charge Category	County **														Total
	Add	Ben	Cal	Chi	Ess	Fra	Gra	Lam	Ora	Orl	Rut	Was	Wdh	Wdr	
Alcohol Possession/Furnishing	8	30	8	35	1	13	0	4	4	9	36	15	20	9	192
Arson	2	0	0	2	0	3	1	0	0	0	1	4	0	0	13
Burglary	14	9	3	17	1	14	2	3	1	3	12	3	13	6	101
C&N	1	1	1	2	0	2	0	0	1	0	1	0	1	0	10
Disorderly Conduct	10	12	6	34	0	10	0	8	3	7	38	16	7	12	163
False Alarms	0	2	0	6	0	2	0	2	0	1	1	0	3	2	19
Forgery/Counterfeiting	5	0	0	2	0	2	0	0	0	0	0	0	1	0	10
Fraud	0	1	0	8	0	1	0	0	0	0	0	0	0	0	10
Grand Larceny	0	1	0	4	0	3	0	4	0	0	4	0	4	1	21
L&L with Child	6	4	1	6	0	0	0	0	1	1	1	2	2	0	24
Lascivious Conduct	3	2	0	1	0	2	0	0	7	0	1	0	0	6	22
Lewdness	0	0	0	0	0	0	0	0	0	0	0	0	0	1	1
Misc. Title 13	4	19	0	32	0	11	2	2	3	4	16	7	8	9	117
Misc. Title 18 (Drugs)	4	5	1	5	0	2	0	1	1	1	1	2	0	3	26
Misc. Title 23 (DMV)	0	1	0	2	0	3	0	0	1	0	1	0	0	1	9
Operating Without Owner's Consent	3	8	1	6	0	3	0	3	2	0	4	1	2	4	37
Petit Larceny	6	16	6	12	0	6	0	18	5	7	15	7	18	10	126
Possession Marijuana	12	11	1	12	0	5	0	9	3	3	6	5	3	7	77
Reckless Endangerment	1	2	0	3	0	0	0	0	0	0	0	2	3	3	14
Sexual Assault	1	2	0	16	0	0	0	0	0	0	0	0	0	0	19
Sexual Assault on a Minor	3	3	0	2	0	0	0	1	0	3	1	1	1	0	15
Shoplifting	2	13	3	56	0	2	0	2	0	4	23	8	3	3	119
Simple Assault	6	32	9	75	3	21	0	17	5	8	33	16	22	17	264
Simple Assault Domestic	4	6	3	16	1	6	2	3	2	2	10	0	8	11	74
Stolen Property	2	3	0	9	0	5	0	3	0	0	2	0	2	6	32
Technical Violations	0	0	0	0	0	0	0	0	1	0	0	0	0	0	1
Unlawful Mischief	5	34	6	31	1	26	3	10	9	6	17	14	23	20	205
Unlawful Trespass	6	8	1	7	0	0	1	0	1	2	16	4	3	8	57
Violation Conditions of Release	10	15	0	7	0	6	0	2	0	0	4	7	2	0	53
Weapons at School	0	0	1	3	0	1	0	0	0	3	0	1	1	2	12
Missing/Unknown	0	0	0	0	0	0	0	0	0	0	0	0	1	0	1
Total	118	240	51	411	7	149	11	92	50	64	244	115	151	141	1,844

* Based on the number of charges, NOT the number of people charged.
** Add=Addison, Ben=Bennington, Cal=Caledonia, Chi=Chittenden, Ess=Essex, Fra=Franklin, Gra=Grand Isle, Lam=Lamoille, Ora=Orange, Orl=Orleans, Rut=Rutland, Was=Washington, Wdh=Windham, Wdr=Windsor.

**TABLE 1.19 VERMONT STATEWIDE JUVENILE DELINQUENCY CASES
ORIGINAL CHARGE CATEGORY * BY COUNTY, FY05**

Original Charge Category	County **														Total
	Add	Ben	Cal	Chi	Ess	Fra	Gra	Lam	Ora	Orl	Rut	Was	Wdh	Wdr	
Alcohol Possession/Furnishing	6	41	11	42	0	9	0	0	1	2	34	30	15	25	216
Arson	0	1	0	4	0	0	0	0	0	0	1	4	0	0	10
Burglary	5	4	7	24	2	14	2	2	3	3	7	0	14	7	94
C&N	0	0	0	0	0	3	0	0	1	1	0	0	0	1	6
Disorderly Conduct	7	16	5	24	1	11	0	6	5	7	18	9	6	10	125
False Alarms	0	0	1	4	0	4	0	0	0	1	4	1	1	1	17
Forgery/Counterfeiting	0	0	0	3	0	1	1	0	0	0	0	0	0	0	5
Fraud	0	0	0	7	0	0	0	1	0	1	0	3	0	0	12
Grand Larceny	0	2	0	2	1	3	0	2	0	4	5	0	5	4	28
L&L with Child	8	0	1	11	0	0	0	0	0	0	5	3	2	3	33
Lascivious Conduct	0	1	4	1	0	13	3	0	2	0	3	1	1	0	29
Lewdness	0	0	2	0	0	0	0	0	0	0	0	0	0	0	2
Misc. Title 13	4	9	4	25	2	7	0	7	0	3	5	11	15	12	104
Misc. Title 18 (Drugs)	1	0	2	2	0	5	0	2	0	0	1	2	1	1	17
Misc. Title 23 (DMV)	1	4	0	2	0	2	0	0	2	1	0	0	2	2	16
Operating Without Owner's Consent	1	3	6	8	0	7	0	7	2	3	1	3	1	4	46
Petit Larceny	5	13	10	10	1	10	1	4	1	1	3	11	10	3	83
Possession Marijuana	4	5	0	17	0	12	0	11	7	2	7	5	6	7	83
Reckless Endangerment	0	10	0	6	0	0	0	0	0	0	1	1	2	3	23
Sexual Assault	3	1	1	5	0	1	0	0	0	0	1	2	3	0	17
Sexual Assault on a Minor	2	2	0	7	0	4	2	0	0	0	0	1	0	2	20
Shoplifting	3	7	9	32	0	3	0	4	0	2	20	6	7	3	96
Simple Assault	10	20	4	73	1	14	1	8	7	1	42	21	10	23	235
Simple Assault Domestic	1	8	2	22	1	12	1	0	0	4	11	2	0	9	73
Stolen Property	1	3	1	6	1	8	0	3	1	5	2	0	3	1	35
Technical Violations	1	0	0	1	0	0	0	0	0	0	4	0	0	0	6
Unlawful Mischief	12	52	5	40	2	15	1	9	8	5	18	14	22	11	214
Unlawful Trespass	0	3	2	13	1	12	0	0	0	1	5	7	7	4	55
Violation Conditions of Release	4	1	3	11	0	3	0	0	0	0	0	2	0	2	26
Weapons at School	2	1	0	3	0	0	0	1	0	0	1	4	5	3	20
Missing/Unknown	0	1	6	0	0	1	0	0	0	2	0	0	0	1	11
Total	81	208	86	405	13	174	12	67	40	49	199	143	138	142	1,757

* Based on the number of charges, NOT the number of people charged.

** Add=Addison, Ben=Bennington, Cal=Caledonia, Chi=Chittenden, Ess=Essex, Fra=Franklin, Gra=Grand Isle, Lam=Lamoille, Ora=Orange, Orl=Orleans, Rut=Rutland, Was=Washington, Wdh=Windham, Wdr=Windsor.

**TABLE 1.20 VERMONT STATEWIDE JUVENILE DELINQUENCY CASES
ORIGINAL CHARGE CATEGORY * BY COUNTY, FY06**

Original Charge Category	County **														Total
	Add	Ben	Cal	Chi	Ess	Fra	Gra	Lam	Ora	Orl	Rut	Was	Wdh	Wdr	
Alcohol Possession/Furnishing	6	14	28	34	0	18	1	3	3	14	45	22	17	11	216
Arson	0	1	0	4	1	1	1	0	1	0	3	0	2	0	14
Burglary	8	8	4	30	0	18	0	0	4	5	6	7	18	19	127
C&N	0	0	1	3	0	2	0	0	1	2	1	2	2	2	16
Disorderly Conduct	6	14	4	43	2	7	0	13	4	16	20	19	6	8	162
False Alarms	0	1	0	1	0	3	0	0	0	0	2	0	2	0	9
Forgery/Counterfeiting	0	0	0	0	0	0	0	0	0	0	0	1	0	1	2
Fraud	0	0	0	4	0	2	0	0	0	0	1	5	0	1	13
Grand Larceny	0	1	3	2	0	5	0	3	1	4	0	2	4	4	29
L&L with Child	3	1	2	9	0	0	1	1	1	2	6	1	2	6	35
Lascivious Conduct	1	1	1	3	0	3	1	1	0	0	4	1	1	1	18
Lewdness	0	0	0	1	0	0	0	0	0	1	0	0	0	0	2
Misc. Title 13	3	13	2	28	0	12	0	3	3	0	13	4	20	9	110
Misc. Title 18 (Drugs)	4	0	0	2	1	2	0	1	1	1	2	2	3	0	19
Misc. Title 23 (DMV)	0	0	2	2	0	5	0	1	1	1	2	1	1	2	18
Operating Without Owner's Consent	0	0	0	0	1	0	0	0	0	0	0	0	0	0	1
Petit Larceny	1	5	2	5	3	1	0	2	0	3	5	17	7	9	60
Possession Marijuana	3	7	3	10	0	7	0	2	2	7	4	16	13	3	77
Reckless Endangerment	9	7	1	14	0	4	2	2	0	3	5	3	4	8	62
Sexual Assault	0	2	0	1	0	0	0	0	0	0	2	2	5	1	13
Sexual Assault on a Minor	0	2	1	2	0	1	0	0	0	0	0	0	3	2	11
Shoplifting	1	1	0	7	0	2	1	1	0	0	2	1	0	2	18
Simple Assault	3	3	6	26	0	2	0	0	2	8	22	7	4	1	84
Simple Assault Domestic	9	15	13	56	1	15	1	6	10	7	23	25	25	12	218
Stolen Property	2	10	4	15	0	7	0	1	8	4	5	6	7	1	70
Technical Violations	1	3	0	8	1	2	0	3	0	0	0	4	6	2	30
Unlawful Mischief	0	0	0	0	0	0	0	0	1	24	1	0	0	1	27
Unlawful Trespass	5	13	5	46	1	12	0	6	9	17	32	26	16	18	206
Violation Conditions of Release	2	6	0	14	0	7	0	1	1	1	9	8	5	8	62
Weapons at School	2	9	0	13	0	3	0	0	0	1	7	0	5	1	41
Missing/Unknown	0	0	0	8	0	2	0	1	2	0	3	1	8	0	25
Total	69	137	82	391	11	143	8	51	55	121	225	183	186	133	1,795

* Based on the number of charges, NOT the number of people charged.

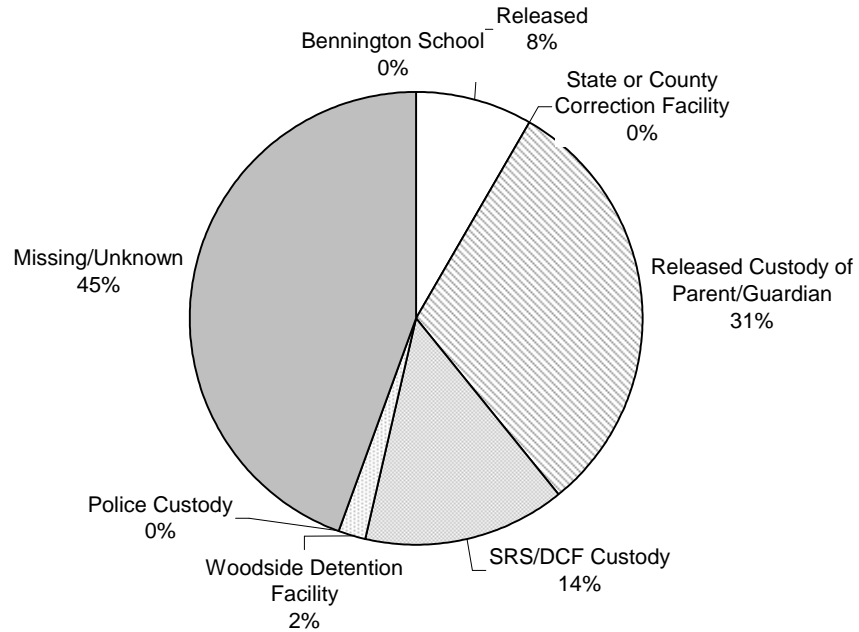
** Add=Addison, Ben=Bennington, Cal=Caledonia, Chi=Chittenden, Ess=Essex, Fra=Franklin, Gra=Grand Isle, Lam=Lamoille, Ora=Orange, Orl=Orleans, Rut=Rutland, Was=Washington, Wdh=Windham, Wdr=Windsor.

**TABLE 1.21: VERMONT STATEWIDE JUVENILE DELINQUENCY CHARGES
NUMBER OF CHARGES * BY SEX AND DETENTION AT FIRST HEARING, FY01-FY06**

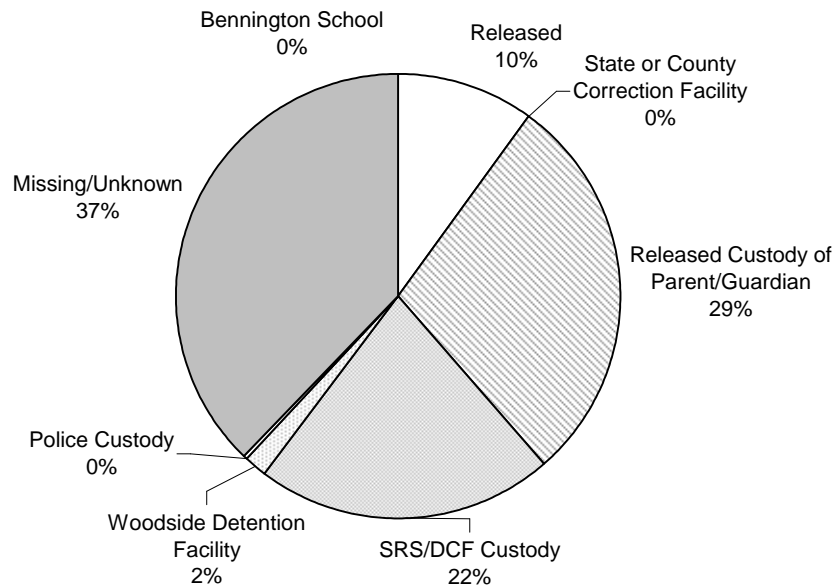
Detention at First Hearing	FY01					FY02					FY03				
	Male	Female	Unknown	Total		Male	Female	Unknown	Total		Male	Female	Unknown	Total	
				N	%				N	%				N	%
Bennington School	2	0	0	2	0.1%	2	0	0	2	0.1%	0	0	3	3	0.2%
Released	131	49	286	466	21.8%	74	37	97	208	11.2%	107	34	48	189	10.3%
State or County Correction Facility	5	0	0	5	0.2%	0	0	1	1	0.1%	0	0	0	0	0.0%
Released Custody of Parent/Guardian	561	186	40	787	36.8%	474	110	33	617	33.4%	474	151	30	655	35.7%
SRS/DCF Custody	143	103	69	315	14.7%	134	63	39	236	12.8%	149	56	25	230	12.5%
Woodside Detention Facility	59	28	19	106	5.0%	53	7	24	84	4.5%	49	13	8	70	3.8%
Police Custody	5	0	0	5	0.2%	0	0	0	0	0.0%	1	0	0	1	0.1%
Missing/Unknown	276	100	76	452	21.1%	313	92	296	701	37.9%	341	99	246	686	37.4%
Total	1,182	466	490	2,138	100%	1,050	309	490	1,849	100%	1,121	353	360	1,834	100%
Detention at First Hearing	FY04					FY05					FY06				
	Male	Female	Unknown	Total		Male	Female	Unknown	Total		Male	Female	Unknown	Total	
				N	%				N	%				N	%
Bennington School	1	0	0	1	0.1%	5	0	0	5	0.3%	0	0	0	0	0.0%
Released	140	35	25	200	10.8%	137	41	4	182	10.4%	107	48	2	157	8.7%
State or County Correction Facility	1	0	1	2	0.1%	0	0	0	0	0.0%	0	0	0	0	0.0%
Released Custody of Parent/Guardian	391	143	23	557	30.2%	349	165	21	535	30.4%	393	136	15	544	30.3%
SRS/DCF Custody	149	98	17	264	14.3%	139	79	7	225	12.8%	184	104	7	295	16.4%
Woodside Detention Facility	39	25	2	66	3.6%	25	13	3	41	2.3%	26	8	2	36	2.0%
Police Custody	0	0	0	0	0.0%	1	2	0	3	0.2%	0	1	0	1	0.1%
Missing/Unknown	480	193	81	754	40.9%	536	211	19	766	43.6%	566	180	16	762	42.5%
Total	1,201	494	149	1,844	100%	1,192	511	54	1,757	100%	1,276	477	42	1,795	100%

* Number of charges disposed, NOT number of people.

Detention 1st Hearing - Males Juvenile Delinquency Charges FY06



Detention 1st Hearing - Females Juvenile Delinquency Charges FY06



**TABLE 1.22: VERMONT STATEWIDE JUVENILE DELINQUENCY CHARGES
NUMBER OF CHARGES * BY SEX AND PROBATION, DIVERSION, FY01-FY06**

	FY01				FY02				FY03			
	Male	Female	Unknown	Total	Male	Female	Unknown	Total	Male	Female	Unknown	Total
Probation / Diversion												
Probation												
Yes	434	165	167	766	409	99	178	686	414	122	129	665
No	748	301	323	1,372	641	210	312	1,163	707	231	231	1,169
Total	1,182	466	490	2,138	1,050	309	490	1,849	1,121	353	360	1,834
Diversion												
Yes	397	166	188	751	321	124	116	561	292	154	86	532
No	785	300	302	1,387	729	185	374	1,288	829	199	274	1,302
Total	1,182	466	490	2,138	1,050	309	490	1,849	1,121	353	360	1,834
	FY04				FY05				FY06			
	Male	Female	Unknown	Total	Male	Female	Unknown	Total	Male	Female	Unknown	Total
Probation / Diversion												
Probation												
Yes	385	159	51	595	3	0	3	6	1	0	1	2
No	816	335	98	1,249	1,189	511	51	1,751	1,275	477	41	1,793
Total	1,201	494	149	1,844	1,192	511	54	1,757	1,276	477	42	1,795
Diversion												
Yes	335	163	48	546	326	190	19	535	306	167	15	488
No	866	331	101	1,298	866	321	35	1,222	970	310	27	1,307
Total	1,201	494	149	1,844	1,192	511	54	1,757	1,276	477	42	1,795
* Number of cases disposed, NOT number of people.												

**TABLE 1.23: VERMONT STATEWIDE JUVENILE DELINQUENCY CHARGES
PERCENT OF CHARGES * ASSIGNED PROBATION, DIVERSION
BY COUNTY, FY01-FY06**

County	FY01			FY02			FY03		
	Total # Charges	% Probation	% Diversion	Total # Charges	% Probation	% Diversion	Total # Charges	% Probation	% Diversion
Addison	105	48.6%	44.8%	92	46.7%	26.1%	88	50.0%	23.9%
Bennington	177	55.9%	10.2%	195	54.4%	12.8%	206	59.2%	8.3%
Caledonia	93	6.5%	48.4%	86	5.8%	55.8%	75	5.3%	52.0%
Chittenden	542	37.3%	31.2%	423	41.4%	17.5%	298	39.9%	14.8%
Essex	11	27.3%	81.8%	12	8.3%	75.0%	6	33.3%	50.0%
Franklin	159	28.9%	22.0%	129	28.1%	32.6%	164	23.2%	25.0%
Grand Isle	7	57.1%	0.0%	9	66.7%	0.0%	6	0.0%	0.0%
Lamoille	71	0.0%	42.3%	86	17.4%	33.7%	105	25.7%	25.7%
Orange	41	22.0%	48.8%	72	23.6%	33.3%	52	23.1%	30.8%
Orleans	66	24.2%	57.6%	89	47.2%	27.0%	135	49.6%	36.3%
Rutland	214	54.2%	35.5%	159	55.3%	30.2%	166	47.6%	19.9%
Washington	169	25.4%	55.0%	126	21.4%	46.8%	153	26.1%	53.6%
Windham	229	21.8%	36.7%	178	18.0%	43.8%	228	21.5%	43.0%
Windsor	254	47.6%	34.3%	193	46.6%	39.9%	152	40.8%	40.8%
Total	2,138	35.8%	35.1%	1,849	37.1%	30.3%	1,834	36.3%	29.0%

County	FY04			FY05			FY06		
	Total # Charges	% Probation	% Diversion	Total # Charges	% Probation	% Diversion	Total # Charges	% Probation	% Diversion
Addison	118	39.0%	15.3%	81	0.0%	23.5%	69	0.0%	20.3%
Bennington	240	46.7%	11.7%	208	0.0%	7.2%	137	0.7%	10.2%
Caledonia	51	0.0%	58.8%	86	0.0%	45.3%	82	0.0%	37.8%
Chittenden	411	43.1%	19.5%	405	0.5%	15.8%	391	0.0%	19.2%
Essex	7	14.3%	57.1%	13	0.0%	69.2%	11	0.0%	72.7%
Franklin	149	20.8%	28.9%	174	0.0%	28.2%	143	0.0%	32.2%
Grand Isle	11	27.3%	0.0%	12	0.0%	0.0%	8	0.0%	0.0%
Lamoille	92	27.2%	33.7%	67	0.0%	49.3%	51	0.0%	11.8%
Orange	50	30.0%	38.0%	40	7.5%	30.0%	55	1.8%	20.0%
Orleans	64	43.8%	34.4%	49	0.0%	24.5%	121	0.0%	18.2%
Rutland	244	27.0%	26.6%	199	0.0%	29.6%	225	0.0%	34.7%
Washington	115	19.1%	46.1%	143	0.7%	36.4%	183	0.0%	31.1%
Windham	151	21.2%	55.0%	138	0.0%	58.7%	186	0.0%	33.3%
Windsor	141	26.2%	49.6%	142	0.0%	64.1%	133	0.0%	48.1%
Total	1,844	32.3%	29.6%	1,757	0.3%	30.4%	1,795	0.1%	27.2%

* Number of cases disposed, NOT number of people.

**TABLE 1.24: VERMONT STATEWIDE JUVENILE DELINQUENCY CHARGES
NUMBER OF CHARGES * BY SEX AND AGE AT DISPOSITION, FY01-FY06**

Age at Disposition	FY01				FY02				FY03			
	Male	Female	Unknown	Total	Male	Female	Unknown	Total	Male	Female	Unknown	Total
10	3	2	1	6	3	0	2	5	8	0	2	10
11	28	4	7	39	16	1	10	27	36	0	4	40
12	46	12	27	85	33	12	24	69	29	4	23	56
13	115	55	22	192	82	24	33	139	123	20	48	191
14	212	64	96	372	191	51	68	310	199	66	60	325
15	315	126	158	599	394	86	189	669	325	135	91	551
16	331	134	117	582	218	87	109	414	269	95	97	461
17	115	65	41	221	88	35	44	167	97	27	30	154
18 & Older	14	3	10	27	21	13	8	42	34	6	4	44
Missing/Unknown	3	1	11	15	4	0	3	7	1	0	1	2
Total	1,182	466	490	2,138	1,050	309	490	1,849	1,121	353	360	1,834
Age at Disposition	FY04				FY05				FY06			
	Male	Female	Unknown	Total	Male	Female	Unknown	Total	Male	Female	Unknown	Total
10	4	2	3	9	9	1	0	10	6	1	0	7
11	44	12	0	56	32	4	0	36	27	5	2	34
12	56	14	20	90	77	17	1	95	61	15	0	76
13	169	36	14	219	135	52	4	191	130	31	6	167
14	193	81	29	303	252	85	16	353	219	91	10	320
15	319	169	25	513	307	160	10	477	362	151	8	521
16	287	121	37	445	262	115	11	388	328	136	11	475
17	99	50	12	161	91	71	10	172	116	40	5	161
18 & Older	25	5	5	35	25	5	2	32	25	7	0	32
Missing/Unknown	5	4	4	13	2	1	0	3	2	0	0	2
Total	1,201	494	149	1,844	1,192	511	54	1,757	1,276	477	42	1,795
* Number of charges disposed, NOT number of people.												

**TABLE 1.25: VERMONT STATEWIDE JUVENILE DELINQUENCY CHARGES
NUMBER OF CHARGES * BY SEX AND DISPOSITION, FY01-FY06**

Disposition	FY01				FY02				FY03			
	Male	Female	Unknown	Total	Male	Female	Unknown	Total	Male	Female	Unknown	Total
Delinquency, Had Been Referred to Diversion	61	31	38	130	48	13	15	76	65	23	8	96
Delinquency, Never Referred to Diversion	574	191	213	978	541	124	220	885	574	133	165	872
Dismissed, Satisfactory Diversion	202	95	66	363	165	65	54	284	158	70	45	273
Dismissed	328	138	154	620	266	103	189	558	298	117	134	549
Dismissed, No Probable Cause	6	0	4	10	3	2	3	8	15	8	6	29
Transferred	10	11	15	36	27	2	9	38	11	2	2	15
Petition Withdrawn	1	0	0	1	0	0	0	0	0	0	0	0
Total	1,182	466	490	2,138	1,050	309	490	1,849	1,121	353	360	1,834

Disposition	FY04				FY05				FY06			
	Male	Female	Unknown	Total	Male	Female	Unknown	Total	Male	Female	Unknown	Total
Delinquency, Had Been Referred to Diversion	36	10	1	47	43	18	1	62	38	18	1	57
Delinquency, Never Referred to Diversion	596	196	71	863	572	213	22	807	632	192	15	839
Dismissed, Satisfactory Diversion	202	111	26	339	208	127	9	344	189	108	14	311
Dismissed	344	156	49	549	336	125	21	482	384	129	11	524
Dismissed, No Probable Cause	10	7	1	18	19	5	0	24	15	10	0	25
Transferred	13	14	1	28	14	23	1	38	18	20	1	39
Petition Withdrawn	0	0	0	0	0	0	0	0	0	0	0	0
Total	1,201	494	149	1,844	1,192	511	54	1,757	1,276	477	42	1,795

Indicates the types of decisions applied by Family Court for disposed cases.

* Number of charges disposed, NOT number of people.

**TABLE 1.26: VERMONT STATEWIDE JUVENILE DELINQUENCY CHARGES
NUMBER OF CHARGES * BY DISPOSITION AND COUNTY, FY01-FY02**

Year of Disposition and Disposition	County **														Total
	Add	Ben	Cal	Chi	Ess	Fra	Gra	Lam	Ora	Orl	Rut	Was	Wdh	Wdr	
FY01															
Delinquency, Had Been Referred to Diversion	21	1	2	41	1	4	0	5	0	0	27	15	10	3	130
Delinquency, Never Referred to Diversion	37	123	36	266	2	68	7	23	13	19	95	53	88	148	978
Dismissed, Satisfactory Diversion	24	10	34	52	7	10	0	21	15	33	41	58	1	57	363
Dismissed	20	42	19	165	1	70	0	19	13	13	45	39	128	46	620
Dismissed, No Probable Cause	1	1	0	3	0	1	0	0	0	0	0	3	1	0	10
Transferred	2	0	2	15	0	6	0	2	0	1	6	1	1	0	36
Petition Withdrawn	0	0	0	0	0	0	0	1	0	0	0	0	0	0	1
Total	105	177	93	542	11	159	7	71	41	66	214	169	229	254	2,138
FY02															
Delinquency, Had Been Referred to Diversion	2	0	15	13	0	5	0	6	0	2	11	20	1	1	76
Delinquency, Never Referred to Diversion	41	137	26	200	1	41	7	46	38	64	81	50	51	102	885
Dismissed, Satisfactory Diversion	18	20	8	24	9	7	0	21	20	16	32	27	36	46	284
Dismissed	26	32	36	175	2	72	2	5	13	6	34	28	88	39	558
Dismissed, No Probable Cause	0	0	0	4	0	1	0	0	0	1	0	0	1	1	8
Transferred	5	6	1	7	0	3	0	8	1	0	1	1	1	4	38
Petition Withdrawn	0	0	0	0	0	0	0	0	0	0	0	0	0	0	0
Total	92	195	86	423	12	129	9	86	72	89	159	126	178	193	1,849

* Based on the number of charges, NOT the number of people charged.

** Add=Addison, Ben=Bennington, Cal=Caledonia, Chi=Chittenden, Ess=Essex, Fra=Franklin, Gra=Grand Isle, Lam=Lamoille, Ora=Orange, Orl=Orleans, Rut=Rutland, Was=Washington, Wdh=Windham, Wdr=Windsor.

Indicates the types of decisions applied by Family Court for disposed cases.

**TABLE 1.27: VERMONT STATEWIDE JUVENILE DELINQUENCY CHARGES
NUMBER OF CHARGES * BY DISPOSITION AND COUNTY, FY03-FY04**

Year of Disposition and Disposition	County **														Total
	Add	Ben	Cal	Chi	Ess	Fra	Gra	Lam	Ora	Ori	Rut	Was	Wdh	Wdr	
FY03															
Delinquency, Had Been Referred to Diversion	6	1	13	2	0	1	0	7	2	13	16	28	6	1	96
Delinquency, Never Referred to Diversion	45	163	29	139	2	55	2	53	20	79	79	46	92	68	872
Dismissed, Satisfactory Diversion	12	14	16	25	2	7	0	25	13	38	22	0	71	28	273
Dismissed	24	26	17	126	1	79	3	14	16	5	49	79	56	54	549
Dismissed, No Probable Cause	0	0	0	5	0	22	0	1	0	0	0	0	1	0	29
Transferred	1	2	0	1	1	0	1	5	1	0	0	0	2	1	15
Petition Withdrawn	0	0	0	0	0	0	0	0	0	0	0	0	0	0	0
Total	88	206	75	298	6	164	6	105	52	135	166	153	228	152	1,834
FY04															
Delinquency, Had Been Referred to Diversion	1	1	1	9	1	1	0	4	1	2	11	11	0	4	47
Delinquency, Never Referred to Diversion	61	188	17	194	1	65	8	41	21	35	97	36	57	42	863
Dismissed, Satisfactory Diversion	6	24	11	55	3	25	0	27	16	19	42	2	66	43	339
Dismissed	42	25	22	139	2	57	2	19	12	8	81	66	24	50	549
Dismissed, No Probable Cause	7	0	0	7	0	1	0	1	0	0	0	0	0	2	18
Transferred	1	2	0	7	0	0	1	0	0	0	13	0	4	0	28
Petition Withdrawn	0	0	0	0	0	0	0	0	0	0	0	0	0	0	0
Total	118	240	51	411	7	149	11	92	50	64	244	115	151	141	1,844

* Based on the number of charges, NOT the number of people charged.

** Add=Addison, Ben=Bennington, Cal=Caledonia, Chi=Chittenden, Ess=Essex, Fra=Franklin, Gra=Grand Isle, Lam=Lamoille, Ora=Orange, Ori=Orleans, Rut=Rutland, Was=Washington, Wdh=Windham, Wdr=Windsor.

Indicates the types of decisions applied by Family Court for disposed cases.

**TABLE 1.28: VERMONT STATEWIDE JUVENILE DELINQUENCY CHARGES
NUMBER OF CHARGES * BY DISPOSITION AND COUNTY, FY05-FY06**

Year of Disposition and Disposition	County **														Total
	Add	Ben	Cal	Chi	Ess	Fra	Gra	Lam	Ora	Orl	Rut	Was	Wdh	Wdr	
FY05															
Delinquency, Had Been Referred to Diversion	1	0	11	10	0	6	0	9	1	1	4	11	1	7	62
Delinquency, Never Referred to Diversion	46	165	27	207	1	76	9	31	12	26	76	53	56	22	807
Dismissed, Satisfactory Diversion	16	11	27	37	9	20	0	12	15	11	39	37	47	63	344
Dismissed	15	24	16	138	3	66	2	15	11	11	67	40	26	48	482
Dismissed, No Probable Cause	2	1	0	7	0	5	0	0	0	0	1	0	8	0	24
Transferred	1	7	5	6	0	1	1	0	1	0	12	2	0	2	38
Petition Withdrawn	0	0	0	0	0	0	0	0	0	0	0	0	0	0	0
Total	81	208	86	405	13	174	12	67	40	49	199	143	138	142	1,757
FY06															
Delinquency, Had Been Referred to Diversion	1	1	5	7	3	5	0	4	0	7	9	12	0	3	57
Delinquency, Never Referred to Diversion	38	103	45	185	2	50	6	26	16	83	82	72	90	41	839
Dismissed, Satisfactory Diversion	10	11	8	52	5	22	0	4	14	15	44	31	43	52	311
Dismissed	17	20	24	135	1	55	2	17	15	12	74	68	47	37	524
Dismissed, No Probable Cause	1	0	0	9	0	8	0	0	0	3	2	0	2	0	25
Transferred	2	2	0	3	0	3	0	0	10	1	14	0	4	0	39
Petition Withdrawn	0	0	0	0	0	0	0	0	0	0	0	0	0	0	0
Total	69	137	82	391	11	143	8	51	55	121	225	183	186	133	1,795

* Based on the number of charges, NOT the number of people charged.

** Add=Addison, Ben=Bennington, Cal=Caledonia, Chi=Chittenden, Ess=Essex, Fra=Franklin, Gra=Grand Isle, Lam=Lamoille, Ora=Orange, Orl=Orleans, Rut=Rutland, Was=Washington, Wdh=Windham, Wdr=Windsor.

Indicates the types of decisions applied by Family Court for disposed cases.

**TABLE 1.29: VERMONT STATEWIDE JUVENILE DELINQUENCY CHARGES
NUMBER OF CHARGES * BY SEX AND DETENTION AT DISPOSITION, FY01-FY06**

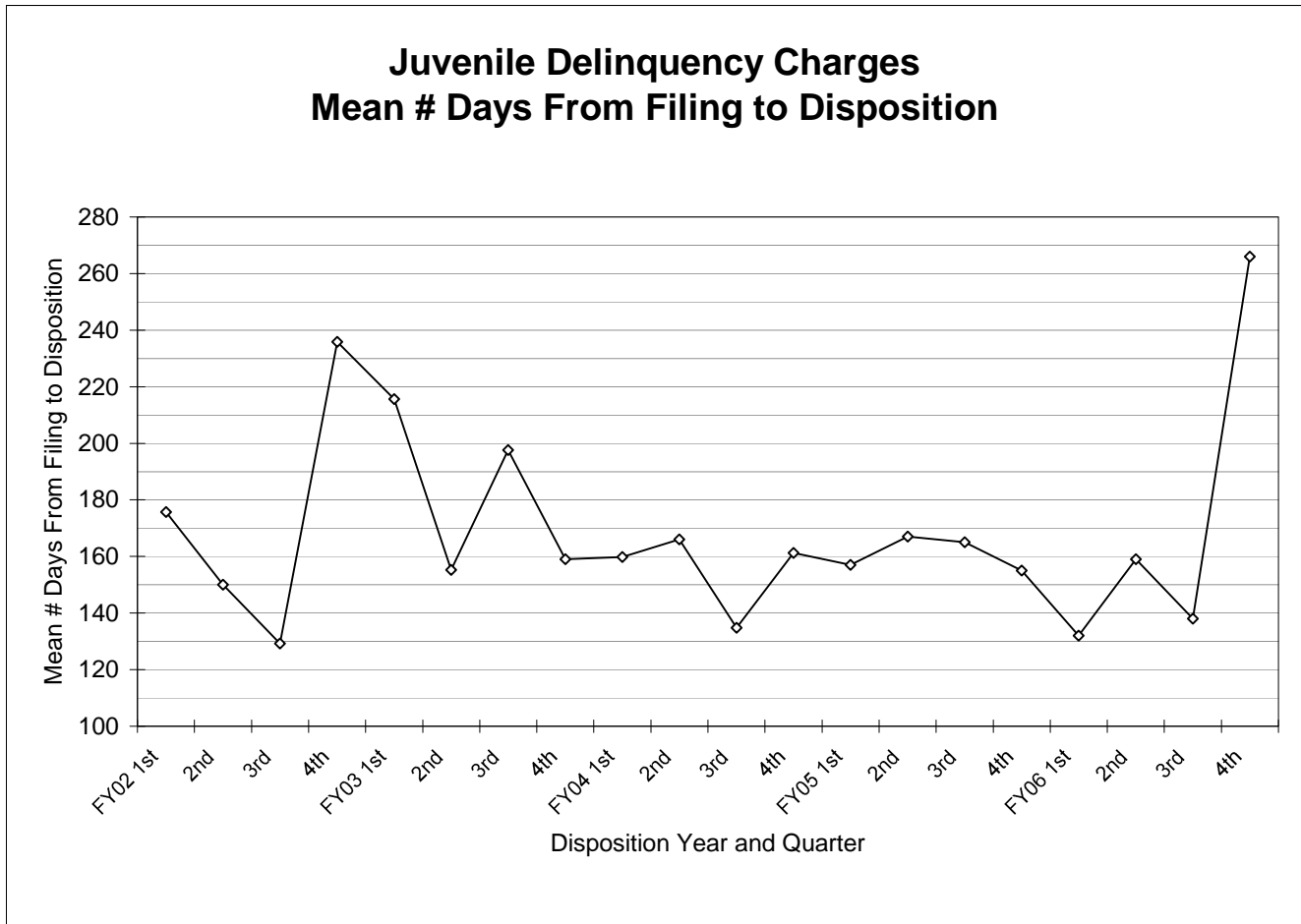
Detention at Disposition	FY01					FY02					FY03				
	Male	Female	Unknown	Total		Male	Female	Unknown	Total		Male	Female	Unknown	Total	
				N	%				N	%				N	%
Depot Street - Bennington	0	0	0	0	0.0%	0	0	0	0	0.0%	0	0	6	6	0.3%
Released	130	58	213	401	18.8%	80	41	90	211	11.4%	128	40	55	223	12.2%
Released Custody of Parent/Guardian	496	189	29	714	33.4%	456	109	30	595	32.2%	460	158	22	640	34.9%
SRS/DCF Custody	220	92	54	366	17.1%	166	52	21	239	12.9%	201	48	29	278	15.2%
Woodside Detention Facility	0	1	0	1	0.0%	9	1	0	10	0.5%	9	0	1	10	0.5%
Missing/Unknown	336	126	194	656	30.7%	339	106	349	794	42.9%	323	107	247	677	36.9%
Total	1,182	466	490	2,138	100%	1,050	309	490	1,849	100%	1,121	353	360	1,834	100%
Detention at Disposition	FY04					FY05					FY06				
	Male	Female	Unknown	Total		Male	Female	Unknown	Total		Male	Female	Unknown	Total	
				N	%				N	%				N	%
Depot Street - Bennington	1	0	0	1	0.1%	3	0	0	3	0.2%	0	0	0	0	0.0%
Released	142	38	27	207	11.2%	127	49	7	183	10.4%	125	49	8	182	10.1%
Released Custody of Parent/Guardian	402	160	31	593	32.2%	299	151	16	466	26.5%	366	137	4	507	28.2%
SRS/DCF Custody	175	86	12	273	14.8%	161	66	6	233	13.3%	172	84	5	261	14.5%
Woodside Detention Facility	1	0	0	1	0.1%	1	0	0	1	0.1%	0	0	0	0	0.0%
Missing/Unknown	480	210	79	769	41.7%	601	245	25	871	49.6%	613	207	25	845	47.1%
Total	1,201	494	149	1,844	100%	1,192	511	54	1,757	100%	1,276	477	42	1,795	100%

* Number of charges disposed, NOT number of people.

**TABLE 1.30: VERMONT STATEWIDE JUVENILE DELINQUENCY CHARGES
MEAN NUMBER OF DAYS FROM FILING TO DISPOSITION *
BY DISPOSITION YEAR AND QUARTER, FY02-FY06**

Disposition Quarter	Disposition Year														
	FY02			FY03			FY04			FY05			FY06		
	N	Mean # Days	Median # Days	N	Mean # Days	Median # Days	N	Mean # Days	Median # Days	N	Mean # Days	Median # Days	N	Mean # Days	Median # Days
Jan.-Mar.	474	176	106	493	216	128	463	160	113	534	157	97	527	132	85
Apr.-June	440	150	91	462	155	73	402	166	99	410	167	109	376	159	88
July-Sept.	464	129	80	467	198	121	501	135	91	454	165	107	487	138	78
Oct.-Dec.	471	236	113	412	159	100	473	161	113	357	155	103	404	266	86
Year	1,849	173	99	1,834	183	106	1,839	155	106	1,755	161	105	1,794	170	85

* Number of days from filing to disposition calculated by subtracting age in days at filing from age in days at disposition.



**TABLE 1.31: VERMONT STATEWIDE JUVENILE DELINQUENCY CHARGES
MEAN AND MEDIAN NUMBER OF DAYS FROM FILING TO DISPOSITION *
BY COUNTY AND DISPOSITION YEAR, FY01-FY06**

County	Disposition Year								
	FY01			FY02			FY03		
	N	Mean # Days	Median # Days	N	Mean # Days	Median # Days	N	Mean # Days	Median # Days
Addison	105	153	110	92	99	71	88	126	80
Bennington	177	96	77	195	154	113	206	146	108
Caledonia	93	172	150	86	140	79	75	110	88
Chittenden	542	173	110	423	92	51	298	97	55
Essex	11	277	205	12	157	148	6	181	146
Franklin	158	166	152	129	280	153	164	174	124
Grand Isle	7	162	95	9	355	40	6	143	150
Lamoille	71	205	172	86	192	86	105	338	62
Orange	41	201	161	72	113	106	52	162	135
Orleans	66	244	219	89	145	110	135	193	121
Rutland	214	256	142	159	230	128	166	167	106
Washington	169	207	124	126	128	99	153	201	168
Windham	229	225	168	178	283	159	228	288	163
Windsor	250	224	142	193	251	164	152	216	135
Year	2,133	192	128	1,849	173	99	1,834	183	106

County	Disposition Year								
	FY04			FY05			FY06		
	N	Mean # Days	Median # Days	N	Mean # Days	Median # Days	N	Mean # Days	Median # Days
Addison	118	99	64	81	141	85	69	103	57
Bennington	240	152	124	208	114	84	137	142	57
Caledonia	51	101	62	86	183	83	82	136	98
Chittenden	411	108	77	405	121	86	391	95	70
Essex	7	252	252	13	310	283	11	281	265
Franklin	144	155	130	173	145	113	143	122	88
Grand Isle	11	101	73	12	169	121	8	94	23
Lamoille	92	174	66	67	237	120	51	133	53
Orange	50	207	133	40	155	123	55	142	71
Orleans	64	204	89	48	152	109	120	104	66
Rutland	244	191	121	199	241	154	225	417	121
Washington	115	125	88	143	133	71	183	141	64
Windham	151	198	139	138	151	142	186	169	137
Windsor	141	220	146	142	241	159	133	225	143
Year	1,839	155	106	1,755	161	105	1,794	170	85

* Number of days from filing to disposition calculated by subtracting age in days at filing from age in days at disposition.

**TABLE 1.32: VERMONT STATEWIDE JUVENILE DELINQUENCY CHARGES
MEAN AND MEDIAN NUMBER OF DAYS FROM FILING TO DISPOSITION *
BY ORIGINAL OFFENSE CATEGORY AND DISPOSITION YEAR, FY01-FY06**

Original Offense Category	Disposition Year								
	FY01			FY02			FY03		
	N	Mean # Days	Median # Days	N	Mean # Days	Median # Days	N	Mean # Days	Median # Days
Violent	435	181	106	369	167	95	398	164	91
Property	885	205	139	699	190	110	778	205	121
Motor Vehicle	67	147	91	110	223	77	73	166	80
Drugs	420	190	148	357	160	110	307	180	124
Public Order	234	191	126	236	160	91	209	174	102
Vs Justice	77	163	69	65	84	58	57	101	77
Other	15	148	113	13	67	51	12	150	142
Year	2,133	192	128	1,849	173	99	1,834	183	106

Original Offense Category	Disposition Year								
	FY04			FY05			FY06		
	N	Mean # Days	Median # Days	N	Mean # Days	Median # Days	N	Mean # Days	Median # Days
Violent	460	143	99	447	162	103	411	175	86
Property	700	189	128	639	175	112	649	171	85
Motor Vehicle	54	117	100	68	163	72	94	136	77
Drugs	294	153	106	316	159	104	296	198	107
Public Order	242	109	75	198	139	106	250	142	70
Vs Justice	83	91	69	62	118	60	76	106	64
Other	6	220	197	21	98	94	18	368	159
Year	1,839	155	106	1,755	161	105	1,794	170	85

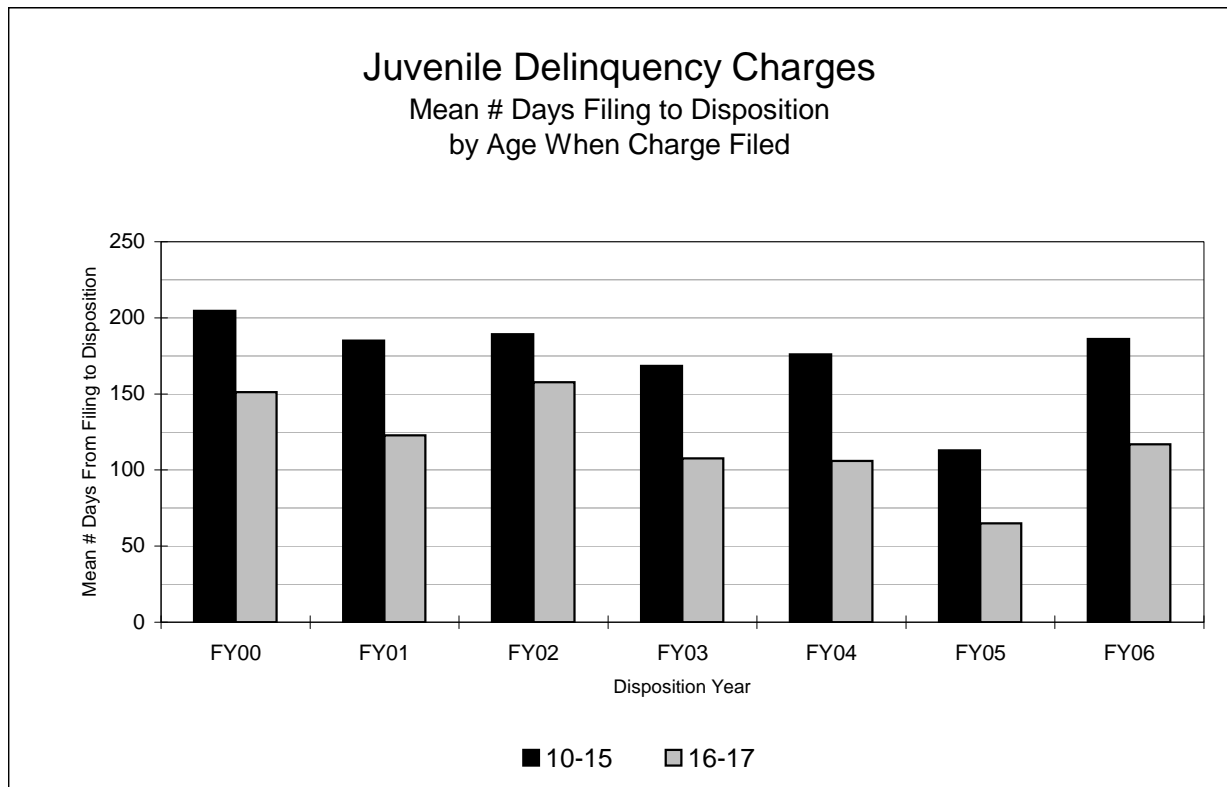
* Number of days from filing to disposition calculated by subtracting age in days at filing from age in days at disposition.

**TABLE 1.33: VERMONT STATEWIDE JUVENILE DELINQUENCY CHARGES
MEAN AND MEDIAN NUMBER OF DAYS FROM FILING TO DISPOSITION *
BY AGE WHEN COMPLAINT WAS FILED AND DISPOSITION YEAR, FY99-FY06**

Age Complaint Filed	Disposition Year											
	FY99			FY00			FY01			FY02		
	N	Mean # Days	Median # Days	N	Mean # Days	Median # Days	N	Mean # Days	Median # Days	N	Mean # Days	Median # Days
10-15	1,663	167	113	1,786	181	124	1,663	205	139	1,495	185	106
16-17	412	120	84	480	140	84	452	151	100	344	123	77
Year	2,075	158	110	2,266	172	121	2,115	193	128	1,839	173	99

Age Complaint Filed	Disposition Year											
	FY03			FY04			FY05			FY06		
	N	Mean # Days	Median # Days	N	Mean # Days	Median # Days	N	Mean # Days	Median # Days	N	Mean # Days	Median # Days
10-15	1,484	189	111	1,438	168	113	1,393	176	113	1,383	186	91
16-17	348	158	95	384	108	69	351	106	65	408	117	66
Year	1,832	183	106	1,822	156	106	1,755	161	105	1,794	170	85

* Number of days from filing to disposition calculated by subtracting age in days at filing from age in days at disposition.



**TABLE 1.34: VERMONT STATEWIDE JUVENILE DELINQUENCY CHARGES
MEAN AND MEDIAN NUMBER OF DAYS FROM FILING TO DISPOSITION *
BY SEX AND DISPOSITION YEAR, FY99-FY06**

Sex	Disposition Year											
	FY99			FY00			FY01			FY02		
	N	Mean # Days	Median # Days	N	Mean # Days	Median # Days	N	Mean # Days	Median # Days	N	Mean # Days	Median # Days
Male	1,403	148	95	1,514	165	117	1,181	204	131	1,050	185	110
Female	422	144	110	528	175	124	462	188	121	309	217	124
Year	1,825	147	99	2,042	168	117	1,643	200	131	1,359	192	117

Sex	Disposition Year											
	FY03			FY04			FY05			FY06		
	N	Mean # Days	Median # Days	N	Mean # Days	Median # Days	N	Mean # Days	Median # Days	N	Mean # Days	Median # Days
Male	1,121	192	113	1,198	154	106	1,190	161	102	1,276	168	80
Female	353	178	121	492	145	80	511	156	108	476	175	93
Year	1,474	189	113	1,690	151	99	1,755	161	105	1,794	170	85

* Number of days from filing to disposition calculated by subtracting age in days at filing from age in days at disposition.

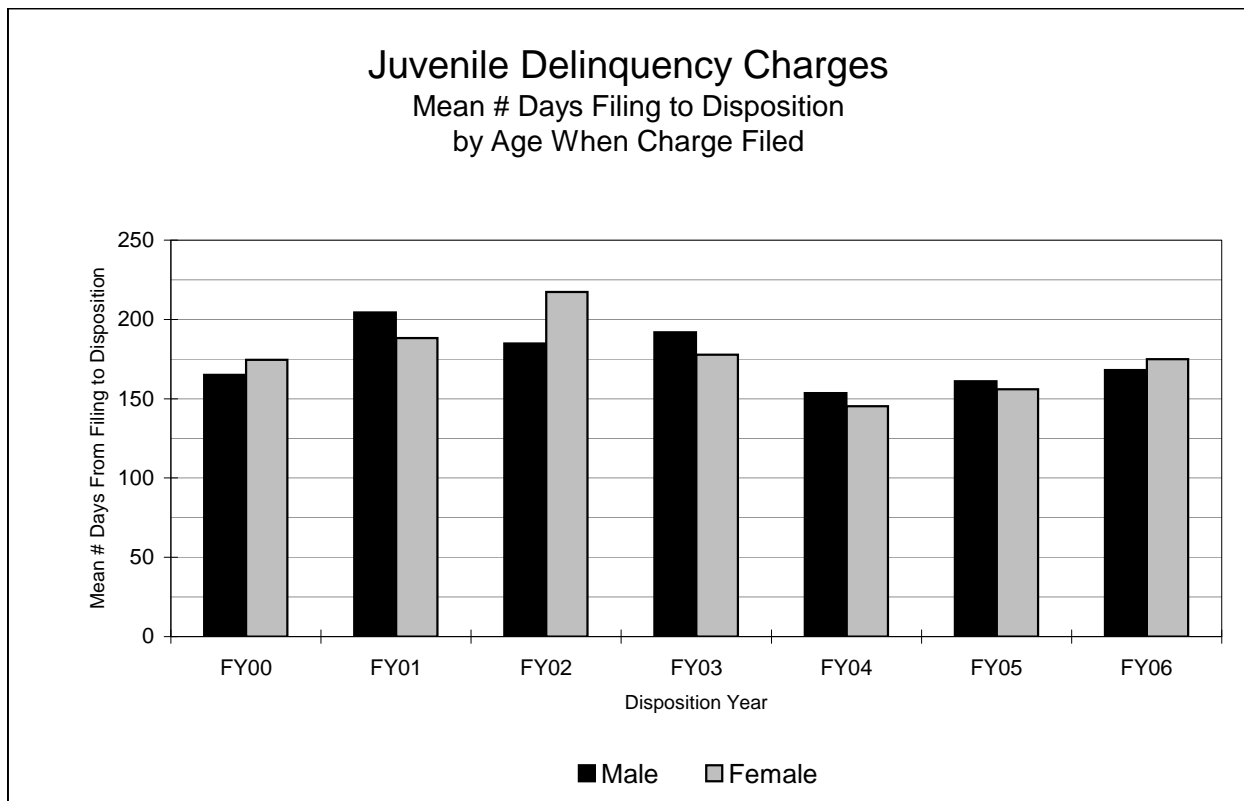


TABLE 1.35: JUVENILE COURT POSSESSION OF ALCOHOL BY MINOR CHARGES DISPOSED FY97-FY06 BY AGE WHEN COMPLAINT WAS FILED

Age When Complaint Was Filed	Year of Disposition										Total FY04-FY06
	FY97	FY98	FY99	FY00	FY01	FY02	FY03	FY04	FY05	FY06	
10	0	0	0	0	1	0	0	1	0	0	1
11	0	0	0	1	1	0	0	0	0	0	0
12	2	1	0	5	3	3	0	0	6	2	8
13	3	6	9	5	13	4	8	7	17	13	37
14	20	17	28	57	62	52	38	44	45	40	129
15	40	57	90	148	138	129	95	107	116	117	340
16	24	23	28	71	62	30	28	19	21	33	73
17	17	10	9	13	8	4	4	7	6	3	16
18	0	0	0	0	0	0	0	1	1	0	2
19	0	0	0	0	0	0	0	0	0	0	0
Missing/Unknown	1	1	3	2	2	0	0	1	1	1	3
Total	107	115	167	302	290	222	173	187	213	209	609

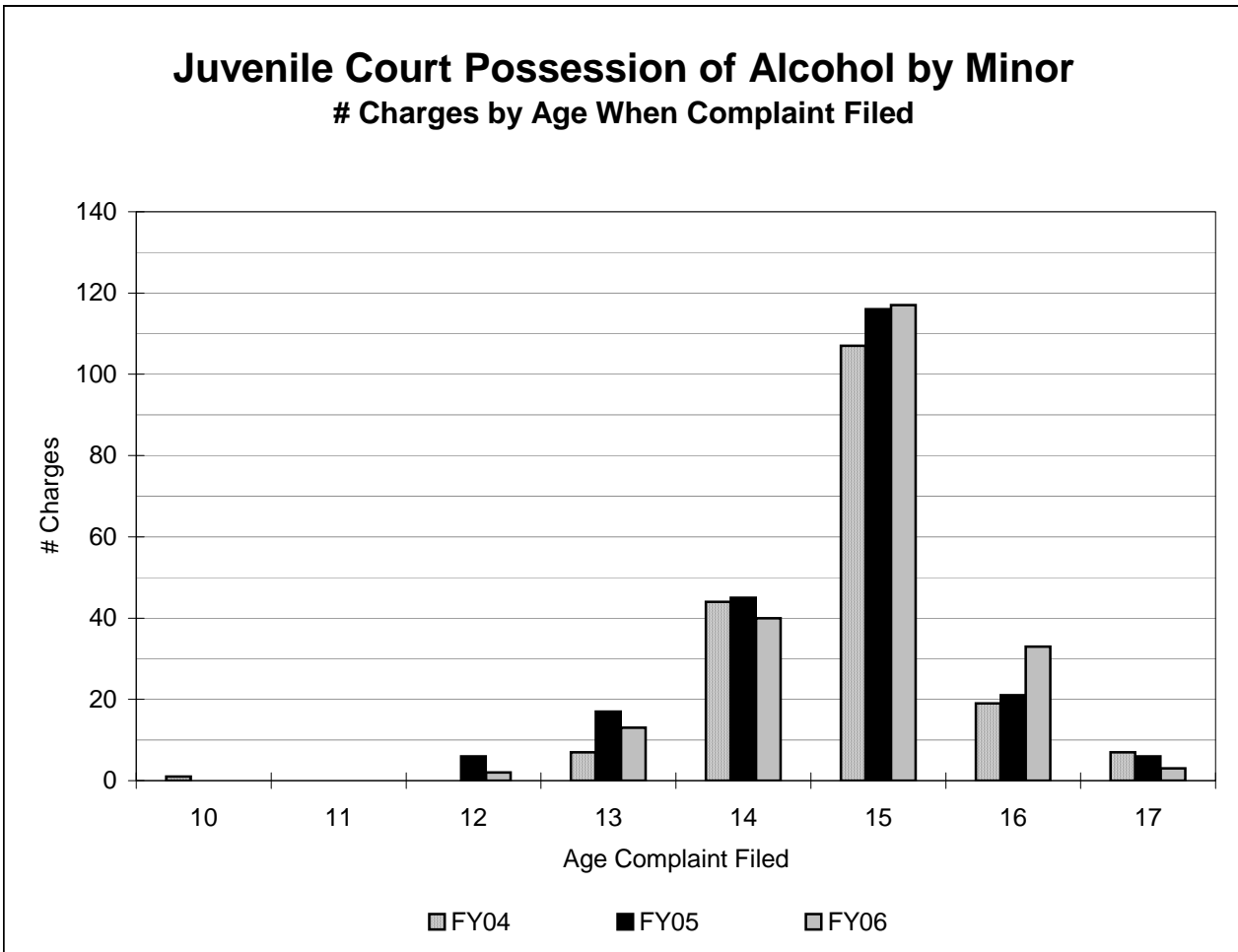


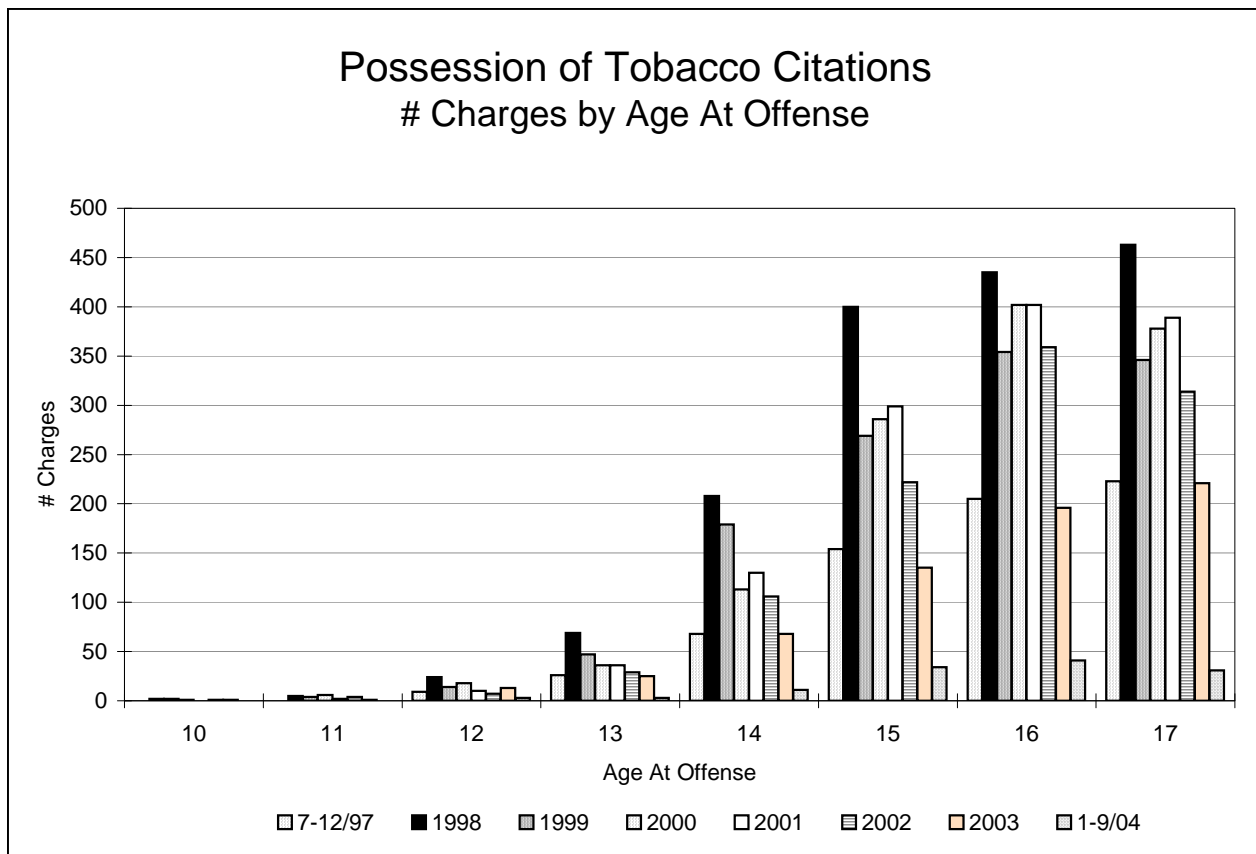
TABLE 1.36: JUVENILE COURT POSSESSION OF ALCOHOL BY MINOR CHARGES DISPOSED BY COUNTY, FY96-FY05

County	Year of Disposition										Total FY04-FY06
	FY97	FY98	FY99	FY00	FY01	FY02	FY03	FY04	FY05	FY06	
Addison	6	2	7	18	32	6	5	8	5	5	18
Bennington	11	19	10	32	21	32	35	30	41	13	84
Caledonia	4	5	11	11	8	6	5	8	10	28	46
Chittenden	1	9	29	53	76	59	16	32	42	34	108
Essex	0	1	0	2	0	0	0	1	0	0	1
Franklin	2	7	5	8	19	14	12	13	9	18	40
Grand Isle	0	1	0	4	0	0	0	0	0	1	1
Lamoille	4	1	9	12	4	4	5	4	0	2	6
Orange	3	1	1	5	7	7	4	4	1	3	8
Orleans	1	8	2	12	7	4	18	9	2	14	25
Rutland	20	15	23	33	38	22	28	36	33	44	113
Washington	20	17	24	27	17	30	11	15	30	21	66
Windham	19	25	33	40	34	18	22	18	15	15	48
Windsor	16	4	13	45	27	20	12	9	25	11	45
Total	107	115	167	302	290	222	173	187	213	209	609

**TABLE 1.37: POSSESSION OF TOBACCO CITATIONS
BY AGE AT OFFENSE AND YEAR OF CITATION, 7/97-9/04**

Age at Offense	Year of Citation								Total 7/97-9/04
	7-12/97	1998	1999	2000	2001	2002	2003	1-9/04	
10	0	2	2	1	0	1	1	0	7
11	0	5	4	6	2	4	1	0	22
12	9	24	14	18	10	7	13	3	98
13	26	69	47	36	36	29	25	3	271
14	68	208	179	113	130	106	68	11	883
15	154	400	269	286	299	222	135	34	1,799
16	205	435	354	402	402	359	196	41	2,394
17	223	463	346	378	389	314	221	31	2,365
Missing/Unknown	10	20	16	15	27	32	30	6	156
Total	695	1,626	1,231	1,255	1,295	1,074	690	129	7,995

JJ:\Juvejust\Sourcebk04\Juvtab04.wb3-Table1_37



**TABLE 1.38: POSSESSION OF TOBACCO CITATIONS
BY COUNTY AND YEAR OF CITATION, 7/97- 9/04**

County	Year of Citation								Total 7/97-9/04
	7-12/97	1998	1999	2000	2001	2002	2003	1-9/04	
Addison	44	105	103	121	152	120	38	1	684
Bennington	102	176	122	201	227	246	221	57	1,352
Caledonia	50	53	74	56	82	89	43	12	459
Chittenden	103	407	272	233	269	129	96	5	1,514
Essex	14	5	3	9	7	6	3	2	49
Franklin	63	116	63	54	93	120	26	11	546
Grand Isle	0	0	0	0	2	0	1	0	3
Lamoille	20	48	27	48	35	29	46	3	256
Orange	28	59	49	50	60	26	24	2	298
Orleans	50	73	53	34	55	39	24	6	334
Rutland	85	200	118	140	60	131	89	6	829
Washington	23	147	56	63	66	42	28	19	444
Windham	51	88	146	134	96	34	12	0	561
Windsor	61	145	139	111	88	60	37	3	644
Total	694	1,622	1,225	1,254	1,292	1,071	688	127	7,973

**JUVENILE COURT POSSESSION OF ALCOHOL BY MINOR AND DRUG OFFENSES
CHARGES * DISPOSED FY95 - FY00**

<u>Original Charge Category</u>	<u>FY95</u>	<u>FY96</u>	<u>FY97</u>	<u>FY98</u>	<u>FY99</u>	<u>FY00</u>	<u>Total</u>
Possession of Alcohol by Minor	79	123	107	115	167	302	893
Drug Possession							
Possession of Marijuana	57	85	71	65	95	96	469
Possession of Narcotics	0	0	1	5	4	9	19
Possession of LSD	1	3	0	0	3	1	8
Possession of Cocaine	1	0	0	1	3	2	7
Possession of Non-Controlled Substance	0	0	0	0	0	6	6
Possession of Hallucinogens	0	1	0	0	1	1	3
Possession Unknown	1	0	0	0	0	0	1
Total Drug Possession	60	89	72	71	106	115	513
Drug Sale							
Sale/Delivery of Narcotics	3	0	2	4	4	5	18
Sale/Delivery of Marijuana	0	2	7	2	2	2	15
Sale/Delivery to Minor/School Grounds	0	1	2	1	3	3	10
Sale of Heroin	0	0	0	0	0	2	2
Total Drug Sale	3	3	11	7	9	12	45
Misc. Drug Offense	0	0	0	1	0	1	2
Total Drug Offense	63	92	83	79	115	128	560
Total Possession of Alcohol, Drug Offenses	142	215	190	194	282	430	1,453

Possession of Alcohol
Drugs Offenses

* Based on the number of charges disposed, not the number of people charged.

**VERMONT STATEWIDE JUVENILE DELINQUENCY CHARGES, JUVENILES AGE 10-15 *
 POSSESSION OF ALCOHOL BY MINOR, DRUGS, AND TOTAL ORIGINAL CHARGES
 # CHARGES, # PERSONS CHARGED, CHARGE RATE AND FILING RATE, FY95-FY00**

Population estimates, age 10(or less)-15

Year of Disposition	All Original Charges				Possession of Alcohol by Minor and Drugs			
	# Charges	# Persons Charged	Charge Rate **	Filing Rate **	# Charges	# Persons Charged	Charge Rate **	Filing Rate **
FY95	1,302	862	16.74	25.29	79	76	1.48	1.53
FY96	1,608	986	18.84	30.72	132	128	2.45	2.52
FY97	1,669	992	18.89	31.78	130	121	2.39	2.48
FY98	1,603	967	18.69	30.98	148	137	2.65	2.86
FY99	1,663	995	19.31	32.27	225	197	3.82	4.37
FY00	1,786	1,081	-	-	303	260	-	-
Total ***	9,631	5,883	18.50	30.22	1,017	919	2.54	2.75

* Age at filing.

** Charge rate = # persons charged per 1,000 population age 10-15. Filing rate = # charges filed per 1,000 population age 10-15.

*** Total charge rate and total filing rate = per 1,000 population age 10-15, 1995-1999.

Produced by the Vermont Center for Justice Research, 6/01.
 J:\vcrj\src\chrgs\1015\vtatb03.w3-3-Age10_15

Total # Charges
 Total Charge Rate
 Total Filing Rate

Charges
 Charge Rate
 Filing Rate

Pop.	Total		Possession of Alcohol by Minor				Drugs					
	# Persons Charged	Charge Rate	# Chrgs	Filing Rate	# Persons Charged	Charge Rate	# Chrgs	Filing Rate	# Persons Charged	Charge Rate	# Chrgs	Filing Rate
10 or less	8,830											
11	8,464											
12	8,642											
13	8,656											
14	8,424											
15	8,469											
Total	51,483	862	16.74	1302	25.29	42	0.82	44	0.85	35	0.68	35

Pop.	Total		Possession of Alcohol by Minor				Drugs					
	# Persons Charged	Charge Rate	# Chrgs	Filing Rate	# Persons Charged	Charge Rate	# Chrgs	Filing Rate	# Persons Charged	Charge Rate	# Chrgs	Filing Rate
10 or less	8,830											
11	8,777											
12	8,527											
13	8,799											
14	8,800											
15	8,604											
Total	52,337	986	18.84	1608	30.72	75	1.43	76	1.45	54	1.03	56

Pop.	Total		Possession of Alcohol by Minor				Drugs					
	# Persons Charged	Charge Rate	# Chrgs	Filing Rate	# Persons Charged	Charge Rate	# Chrgs	Filing Rate	# Persons Charged	Charge Rate	# Chrgs	Filing Rate
10 or less	8,763											
11	8,698											
12	8,755											
13	8,590											
14	8,838											
15	8,874											
Total	52,518	992	18.89	1669	31.78	62	1.18	65	1.24	63	1.20	65

Pop.	Total		Possession of Alcohol by Minor				Drugs					
	# Persons Charged	Charge Rate	# Chrgs	Filing Rate	# Persons Charged	Charge Rate	# Chrgs	Filing Rate	# Persons Charged	Charge Rate	# Chrgs	Filing Rate
10 or less	8,610											
11	8,505											
12	8,570											
13	8,718											
14	8,530											
15	8,811											
Total	51,744	967	18.69	1603	30.98	77	1.49	82	1.58	64	1.24	66

Pop.	Total		Possession of Alcohol by Minor				Drugs					
	# Persons Charged	Charge Rate	# Chrgs	Filing Rate	# Persons Charged	Charge Rate	# Chrgs	Filing Rate	# Persons Charged	Charge Rate	# Chrgs	Filing Rate
10 or less	8,618											
11	8,470											
12	8,480											
13	8,629											
14	8,748											
15	8,590											
Total	51,535	995	19.31	1663	32.27	122	2.37	133	2.58	87	1.69	92

