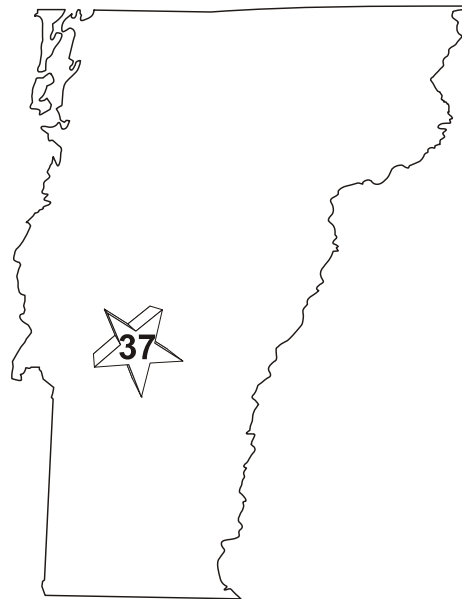


2007 Community Profile



**For the Community Served by:
Rutland Central
Supervisory Union**



Prepared By:
Vermont Agency of Human Services
Planning Division

www.ahs.state.vt.us

Prepared By:
Vermont Agency of Human Services
Planning Division

www.ahs.state.vt.us



State of Vermont
Agency of Human Services
Office of the Secretary
103 South Main Street
Waterbury, VT 05671-0204
www.ahs.state.vt.us

[phone] 802-241-2220
[fax] 802-241-2979

Cynthia D. LaWare, Secretary

March, 2008

Dear Vermonter,

I am pleased to present the 13th annual edition of our *Community Profiles*, which provides a multidimensional view of quality-of-life in every Vermont community. We publish these reports—encompassing data on more than 60 indicators—because we’ve seen that “what gets measured gets done.” Our indicators are organized around ten outcomes, adopted in state statute in 1999, which describe our vision of a thriving Vermont. By focusing on objective indicators of progress we can begin to assess how the collective efforts of government, community partners, and individuals are making a difference in the lives of all Vermonters.

The Agency of Human Services (AHS) has embraced *results* as one of the “Four Key Practices” which drives the way we do business. The other key practices include prioritizing *customer service*, addressing needs *holistically*, and valuing people’s *strengths*. The Agency, together with our district offices and field directors, our regional partners, and many other state and community-based organizations, share this commitment to positive outcomes and meaningful results for Vermonters. The data in the *Community Profiles* can help strengthen this common purpose by providing a baseline for discussion and action.

The *Community Profiles* also reflect the partnership between AHS and the Vermont Department of Education and its *School Reports*. Together, these documents provide a “report card” on key indicators for success in school, and the family, individual, and community efforts that provide a strong foundation for this success.

This edition of the *Profiles* contains new data from the Vermont Youth Risk Behavior Survey, which monitors both health-compromising and wellness-enhancing activities of youth. From school readiness to civic engagement, and from healthy births to aging with dignity and independence, *Community Profile* indicators trace key markers of well-being throughout life.

AHS makes the *Profiles* and accompanying data tables available for viewing, download and printing from our website: www.ahs.state.vt.us.

The *Community Profiles* are meant to spur action within your community—to help you prioritize, probe additional sources of information, reach out to new partners, and track progress toward improving the lives of your neighbors. I invite you to let us know how the *Community Profiles* are making change in *your* community.

Sincerely,

A handwritten signature in black ink that reads 'Cynthia D. LaWare'.

Cynthia D. LaWare, Secretary
Agency of Human Services

TABLE OF CONTENTS

	<u>page</u>
Users' Guide	v
Estimated community population by age-group	1
Outcome: FAMILIES, YOUTH, AND INDIVIDUALS ARE ENGAGED IN THEIR COMMUNITY'S DECISIONS AND ACTIVITIES	2
Indicators:	
Percent of youth who report parents talk regularly with them about school	2
Percent of youth who report they help decide what goes on in their school	2
Percent of eligible population voting in general elections.....	3
Outcome: PREGNANT WOMEN AND YOUNG CHILDREN THRIVE.....	4
Indicators:	
Percent early prenatal care	4
Percent low birthweight	4
Percent of births where families receive "new baby" visits	5
Infant mortality rate	5
Percent children (ages 0-4) in families receiving welfare	6
Rate of injuries (ages 0-9) resulting in hospitalization	6
Percent of WIC-enrolled children overweight or at risk.....	7
Child mortality rate	7
Outcome: CHILDREN ARE READY FOR SCHOOL.....	8
Indicators:	
Percent of kindergartners fully immunized.....	8
Percent of first-graders screened for vision and hearing problems.....	8
Percent of children ready for kindergarten	9
Percent of standards met for "ready schools"	9
Outcome: CHILDREN SUCCEED IN SCHOOL	10
Indicators:	
School attendance rate	10
Percent of 2 nd graders meeting reading standard	10
NECAP reading/writing scores.....	11
NECAP math scores	11
Percent of students with special education IEPs.....	12
Estimated percent high school completion	12

Outcome: CHILDREN LIVE IN STABLE, SUPPORTED FAMILIES.....	13
Indicators:	
Percent children in poverty: 1989.....	13
Percent children in families receiving Food Stamps (proxy for children in poverty)	13
Percent child support paid.....	14
Percent parentage established for out-of-wedlock child support.....	14
Rate of child abuse and neglect	15
Percent of children (ages 5-17 years) in families receiving welfare.....	15
Rate of out-of-home placements (ages < 18 yrs.).....	16
Average number of moves within the child substitute care system.....	16
 Outcome: YOUTH CHOOSE HEALTHY BEHAVIORS.....	 17
Indicators:	
Percent of students participating in youth programs.....	17
Percent of students volunteering in their community	17
Percent of students smoking cigarettes within the last 30 days	18
Percent of students using alcohol within the last 30 days.....	18
Percent of students using marijuana within the last 30 days	19
Rate of teen sexually-transmitted diseases	19
Young teen pregnancy rate (ages 15-17)	20
Rate of injuries (ages 10-17) resulting in hospitalization	20
Rate of custody for children deemed “unmanageable”.....	21
Rate of court dispositions for delinquency	21
Rate of delinquents in custody	22
Rate of teen violent deaths.....	22
 Outcome: YOUTH SUCCESSFULLY TRANSITION TO ADULTHOOD.....	 23
Indicators:	
Percent of high school seniors with plans for education, vocational training, or employment.....	23
Percent of graduating high school seniors who continue their education within six months	23
Percent New Families at Risk.....	24
Rate of out-of-home placements (ages 18-24).....	24
Rate of injuries (ages 18-24) resulting in hospitalization	25
Rate of teen non-violent deaths.....	25

Outcome: ADULTS LEAD HEALTHY AND PRODUCTIVE LIVES	26
Indicators:	
Rate of injuries (ages 25-64) resulting in hospitalization	26
Percent of adults who smoke cigarettes	26
Percent of adults who are “binge drinkers”	27
Rate of suicide (ages 18+)	27
Percent of people above poverty level, 1989	28
Average median family income, 1989	28
Average annual wage	29
Rate of job creation	29
Rate of employment	30
Percent of adults (ages 18+) receiving welfare	30
Outcome: ELDERS AND PEOPLE WITH DISABILITIES LIVE WITH DIGNITY AND INDEPENDENCE IN SETTINGS THEY PREFER	31
Indicators:	
Percent of population aged 65+ in poverty, 1989	31
Rate of injuries (ages 65+) resulting in hospitalization	31
Percent of population aged 65+ at risk for depression	32
Rate of adult abuse and neglect victims	32
Percent successful job placements among consumers of Vocational Rehabilitation services	33
Balance of institutional and home & community-based options for long-term care	33
Outcome: COMMUNITIES PROVIDE SAFETY AND SUPPORT TO FAMILIES AND INDIVIDUALS	34
Indicators:	
Percent of youth who feel valued by their community	34
Percent of youth who have an adult who provides help and advice	34
Rate of out-of-home placements (ages 25+)	35
Rate of petitions filed for Relief From Domestic Abuse	35
Rate of violent crime	36
Rate of sexual assault	36
Percent living in affordable housing	37
Percent met need for child care	37
Technical appendix	38
Indicator sources and explanatory notes	45
40 Developmental Assets	51

USERS' GUIDE

“Community” is a term that means different things, depending on one’s purposes. Here, our “working definition” of community is the area served by a **school supervisory union**. This is a unit meaningful to children and families; small enough to be considered truly “local”; and usually large enough to avoid some of the problematic issues associated with very small populations. Where supervisory union data are unreliable or not available, we present data at the state and county levels only. For supervisory unions that cross county boundaries, assignment was made to the county containing the majority of the population.

Generally, the most meaningful and useful comparisons for a community are with itself, over time. However, for each indicator, we also present data for the state as a whole, and for the county, to provide additional context for comparisons. For some indicators, statewide goals, set out in *Healthy Vermonters 2010*, are also identified.

Wherever practical, we present rates as well as counts for each indicator. **Rates** (for example, percents, or rates per 1000 population) adjust for the varying size of populations. Population figures used in calculating rates are estimates, not exact counts; therefore, the rates shown here are also estimates. Because numbers (or counts) at a community level (and sometimes even at a county or state level) are likely to be small, even small year-to-year changes can have dramatic effects on rates. In order to provide a more reliable basis for planning, therefore, we calculate some community-level numbers and rates using rolling 3-year averages. In such cases, the label “1995,” for example, refers to the average of the years 1993 to 1995; “1996” refers to the average of 1994 to 1996.

In the back of the report we provide detailed notes and statistics on the indicators, including (where appropriate) the actual numerators and denominators used to calculate the rates, and “95% confidence ranges.” The confidence range, similar to a “margin of error,” represents the **range** of values within which the “true,” or underlying, rate is likely (with no more than a 5 percent rate of chance) to fall. If the confidence ranges for any two rates for a given indicator (e.g., state and county, county and community) **overlap** (share values in common), they are **not** significantly different, statistically speaking. However, statistical significance is **only one factor** communities may want to consider as part of their assessment and planning.

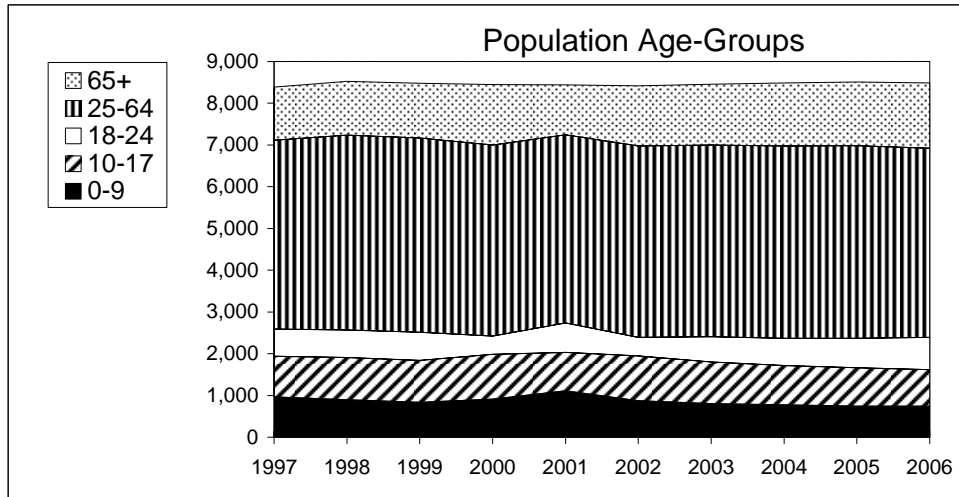
This project reflects the cooperation of many people in the Agency of Human Services, and partners elsewhere in state government. We are grateful for all their efforts in providing this information; original data sources are noted in the back of the report. However, responsibility for the accuracy of the data here rests with the Agency of Human Services, Planning Division.

The *Profile* is a “work-in-progress.” As communities consider and use the data, you will tell us how to make it better, more useful. We welcome your comments and suggestions.

37: Report for the community served by Rutland Central Supervisory Union
 (Includes the towns of Proctor, Rutland Town, West Rutland) County: Rutland; AHS District: Rutland

Estimated community population by age-group

<u>Ages</u>	<u>0-9</u>	<u>10-17</u>	<u>18-24</u>	<u>25-64</u>	<u>65+</u>
Year: 1997	963	974	654	4,520	1,276
TOTAL = 8,387					
Year: 2006	745	872	778	4,529	1,563
TOTAL = 8,487					

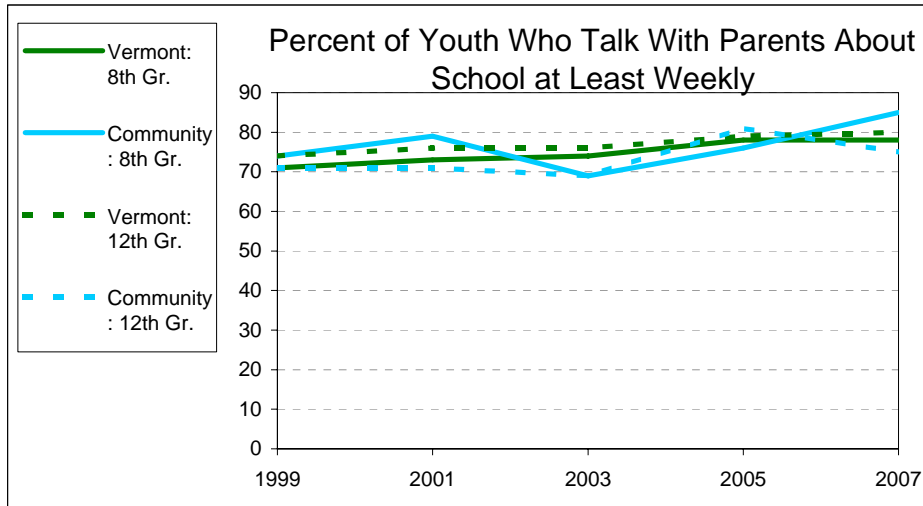


37: Report for the community served by Rutland Central Supervisory Union
 (Includes the towns of Proctor, Rutland Town, West Rutland) County: Rutland; AHS District: Rutland

OUTCOME: FAMILIES, YOUTH AND INDIVIDUALS ARE ENGAGED IN THEIR COMMUNITY'S DECISIONS AND ACTIVITIES

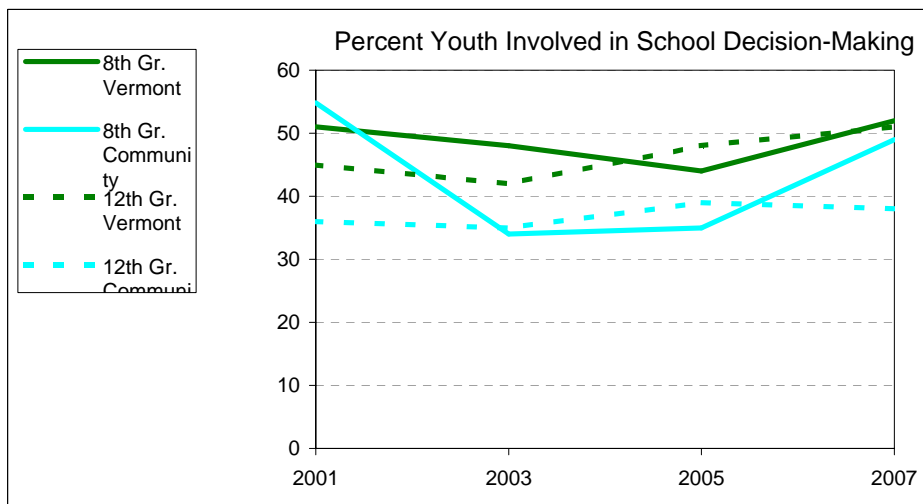
Indicator: *Percent of youth who report parents talk regularly with them about school*

		Vermont	Community
		Rate	Rate
Year: 1999	8th Gr.	71	74
	12th Gr.	74	71
Year: 2007	8th Gr.	78	85
	12th Gr.	80	75



Indicator: *Percent of youth who report they help decide what goes on in their school*

		Vermont	Community
		Rate	Rate
Year: 2001	8th Gr.	51	55
	12th Gr.	45	36
Year: 2007	8th Gr.	52	49
	12th Gr.	51	38

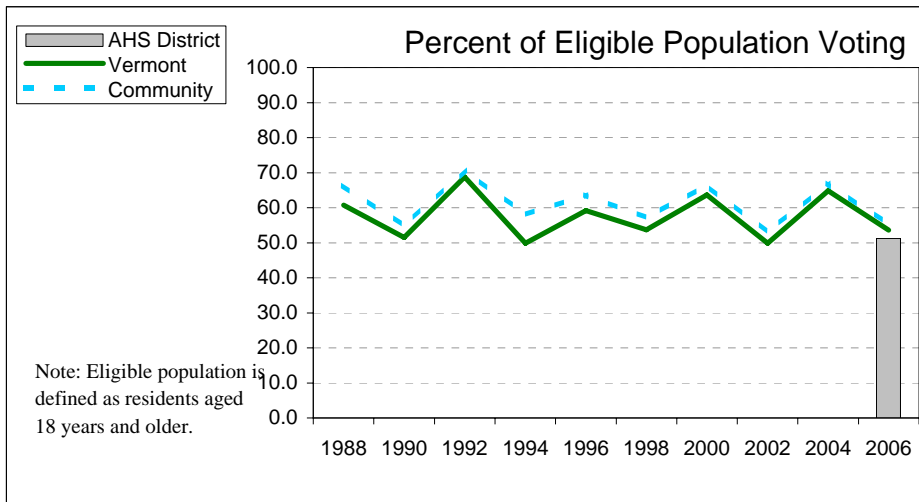


37: Report for the community served by Rutland Central Supervisory Union
 (Includes the towns of Proctor, Rutland Town, West Rutland) County: Rutland; AHS District: Rutland

**OUTCOME: FAMILIES, YOUTH AND INDIVIDUALS ARE ENGAGED IN THEIR
 COMMUNITY'S DECISIONS AND ACTIVITIES**

Indicator: *Percent of eligible population voting in general elections*

	<i>Vermont</i>	<i>AHS Dist.</i>	<i>Community</i>	<i>Community</i>
	<i>Rate</i>	<i>Rate</i>	<i>Rate</i>	<i>Number</i>
Year: 1988	60.7	n/a	66.4	4,025
Year: 2006	53.6	51.2	55.1	3,785



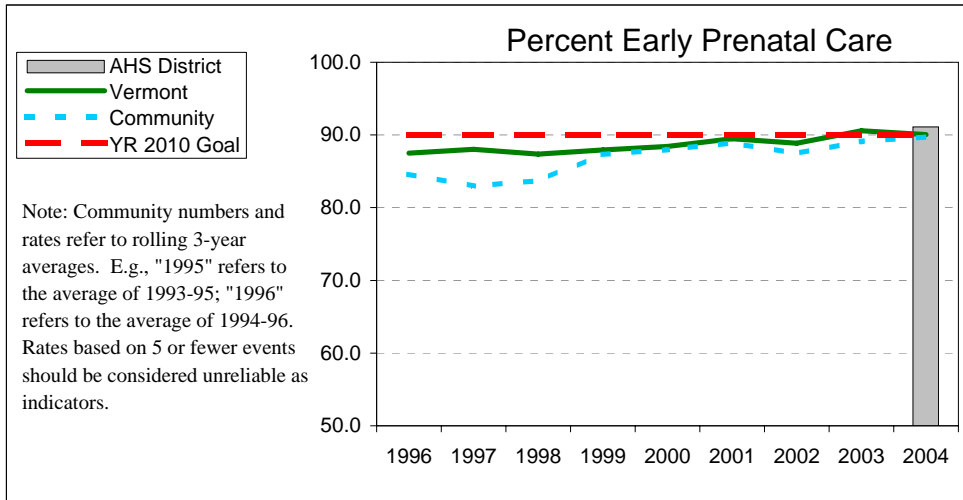
Measuring consumer and citizen participation in the life of their communities, while vitally important in achieving the other outcomes, is difficult to measure from a distance. This is an area where communities will take the lead in identifying additional indicators. A list (by no means complete) of some measures for which communities might collect data locally follows:

- Number of hours volunteered in community service*
- Readership rates at local libraries*
- Number of adults involved in mentoring programs*
- Participation at Town Meeting and other community forums*
- Students involved in "service learning"*
- Attendance at civic events (games, concerts, theater, etc.)*
- Participation in civic and non-profit organizations, clubs, and sports teams*
- Number of positions in local elections that are contested*
- Number of people obtaining Community Leadership Training, or other "empowerment" experience*

37: Report for the community served by Rutland Central Supervisory Union
 (Includes the towns of Proctor, Rutland Town, West Rutland) County: Rutland; AHS District: Rutland
OUTCOME: PREGNANT WOMEN AND YOUNG CHILDREN THRIVE

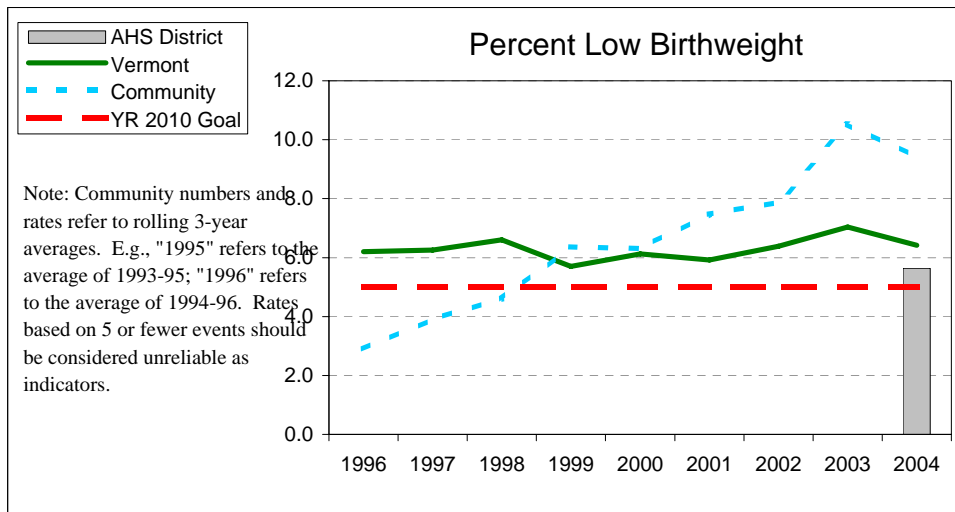
Indicator: *Percent early prenatal care (beginning in 1st trimester)*

	Vermont Rate	AHS Dist. Rate	Community Rate	Community Number	Healthy Vermonters Year 2010 Goal (Rate)
Year: 1996	87.5	n/a	84.6	66	
Year: 2004	90.0	91.1	92.0	50	90.0



Indicator: *Percent low birthweight (under 5.5 pounds)*

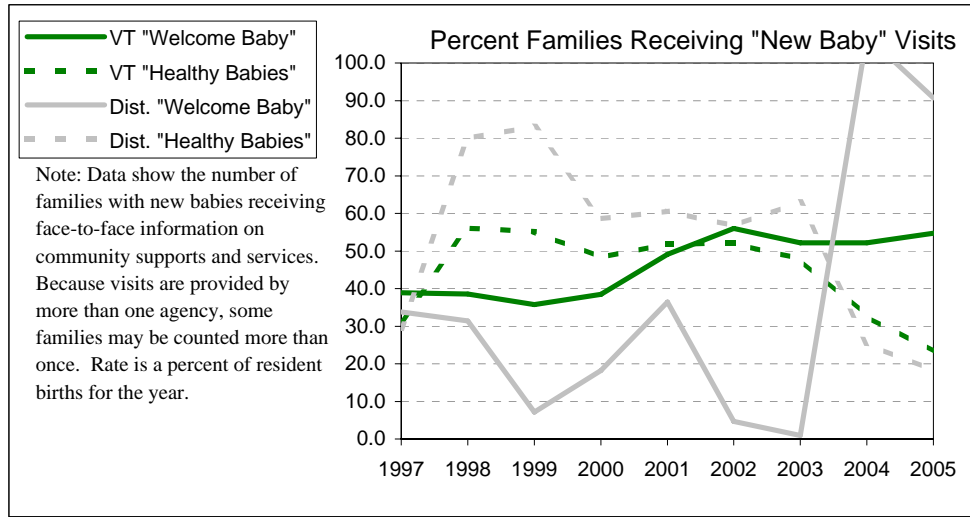
	Vermont Rate	AHS Dist. Rate	Community Rate	Community Number	Healthy Vermonters Year 2010 Goal (Rate)
Year: 1996	6.2	n/a	2.9	2	
Year: 2004	6.4	5.6	9.9	6	4.5



OUTCOME: PREGNANT WOMEN AND YOUNG CHILDREN THRIVE

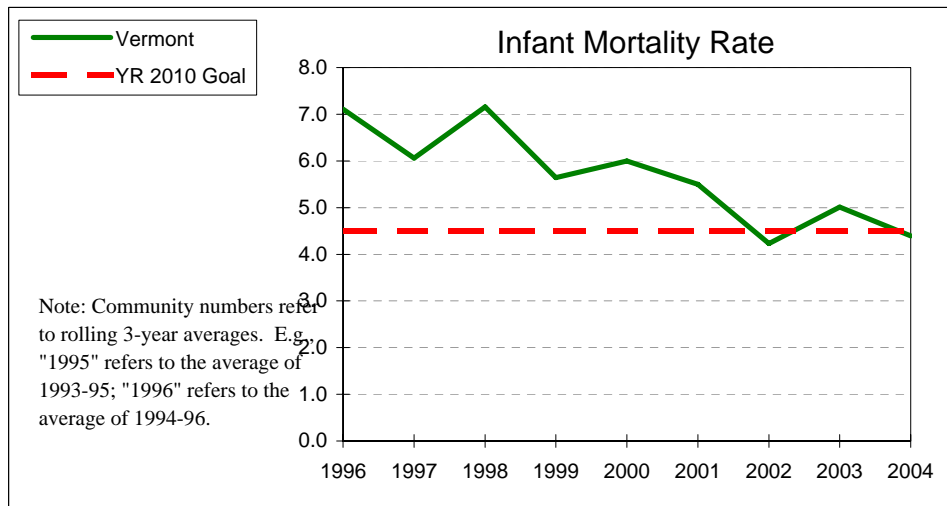
Indicator: *Percent of births where families receive "new baby" visits*

	<i>Vermont</i>	<i>District</i>	<i>District</i>
	<i>Rate</i>	<i>Rate</i>	<i>Number</i>
Year: 1997 'WB'	38.9	33.8	220
Year: 1997 'HB'	31.5	29.3	191
Year: 2005 'WB'	54.8	90.7	536
Year: 2005 'HB'	23.2	18.1	107



Indicator: *Infant mortality (deaths before 1 year; rate is per 1,000 births)*

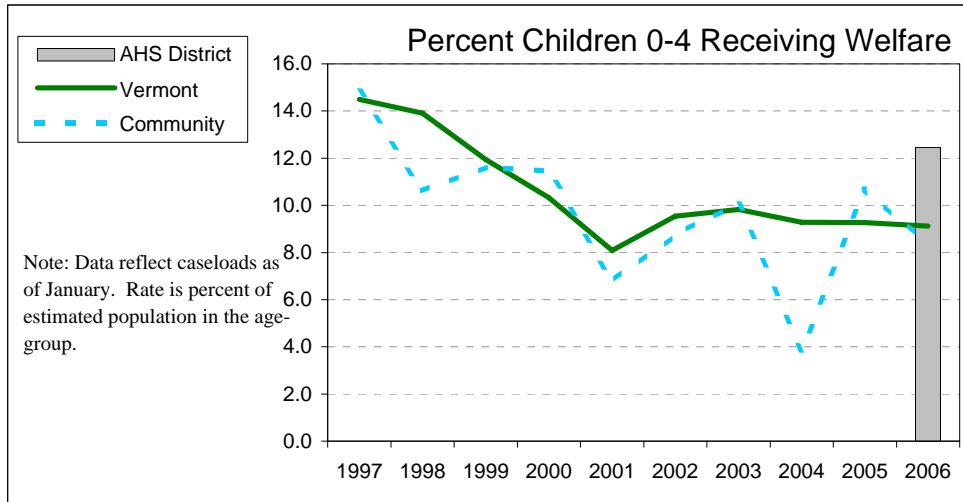
	<i>Vermont</i>	<i>AHS District</i>	<i>Community</i>	<i>Healthy Vermonters</i>
	<i>Rate</i>	<i>Number</i>	<i>Number</i>	<i>Year 2010 Goal (Rate)</i>
Year: 1996	7.1	n/a	0	
Year: 2004	4.4	2	1	4.5



37: Report for the community served by Rutland Central Supervisory Union
 (Includes the towns of Proctor, Rutland Town, West Rutland) County: Rutland; AHS District: Rutland
OUTCOME: PREGNANT WOMEN AND YOUNG CHILDREN THRIVE

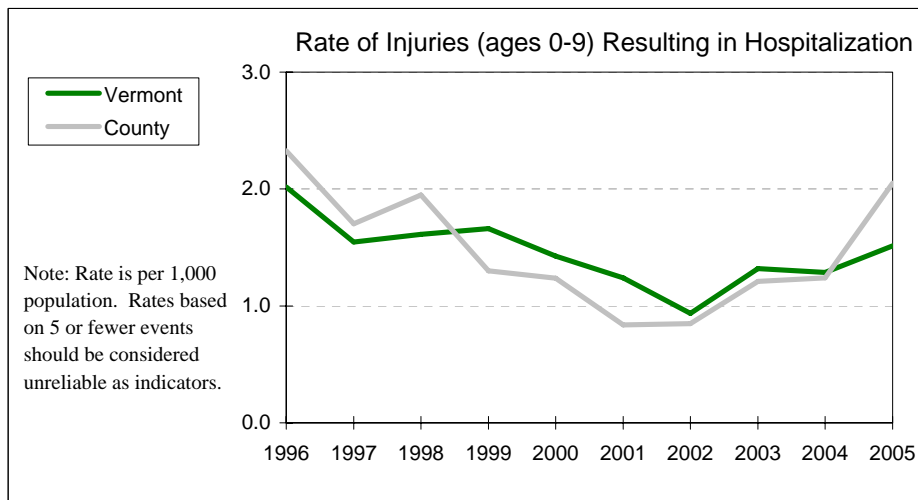
Indicator: *Percent of children (ages 0-4) in families receiving welfare (Reach Up)*

	Vermont Rate	AHS Dist. Rate	Community Rate	Community Number
Year: 1997	14.5	n/a	14.8	62
Year: 2006	9.1	12.5	8.3	29



Indicator: *Rate of injuries (0-9) resulting in hospitalization*

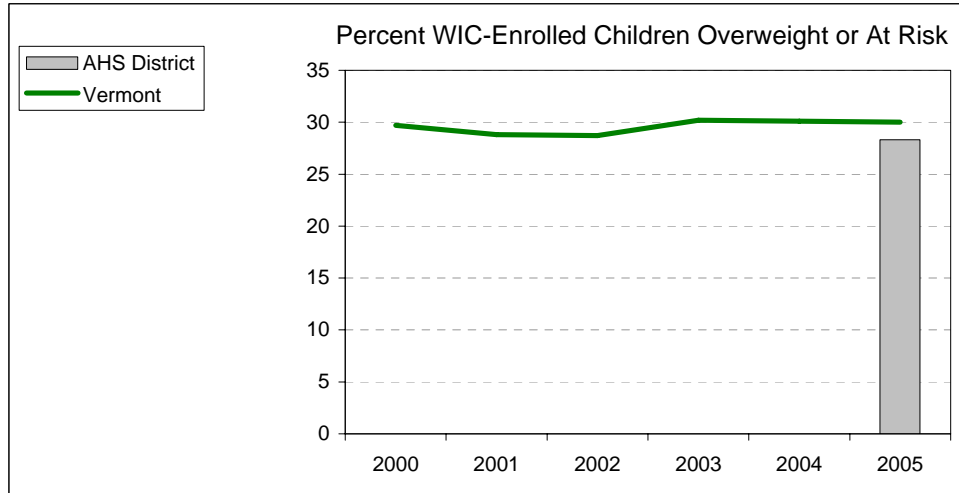
	Vermont Rate	County Rate	County Number
Year: 1996	2.0	2.3	18
Year: 2005	1.5	2.0	13



OUTCOME: PREGNANT WOMEN AND YOUNG CHILDREN THRIVE

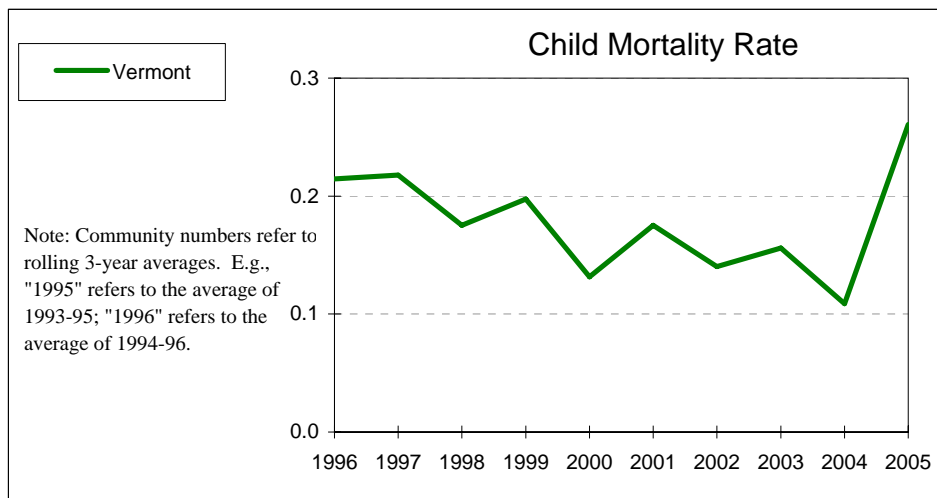
Indicator: Percent of children (ages 2-4) enrolled in WIC who are overweight or at risk of being overweight

	Vermont Rate	AHS Dist. Rate
Year: 2000	29.7	n/a
Year: 2005	30.0	28.3



Indicator: Child mortality (deaths, ages 1-14; rate is per 1,000 population)

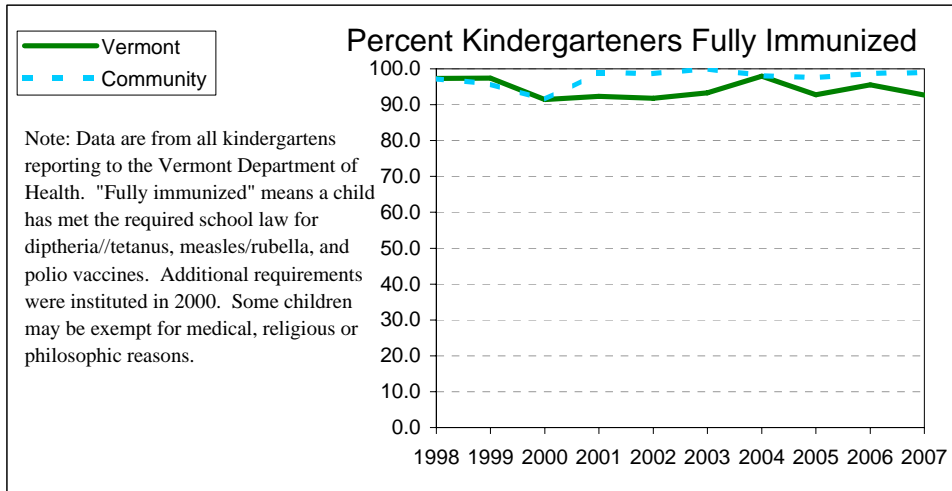
	Vermont Rate	AHS District Number	Community Number
Year: 1996	0.2	n/a	1
Year: 2005	0.3	2	0



OUTCOME: CHILDREN ARE READY FOR SCHOOL

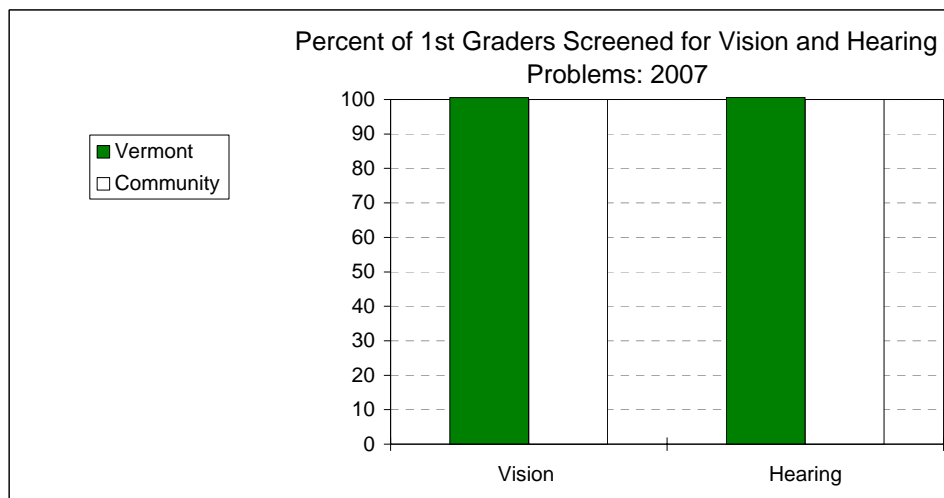
Indicator: *Percent of kindergarteners fully immunized*

	Vermont	Community	Community
	Rate	Rate	Number
Year: 1998	97.3	97.2	105
Year: 2007	92.7	98.9	92



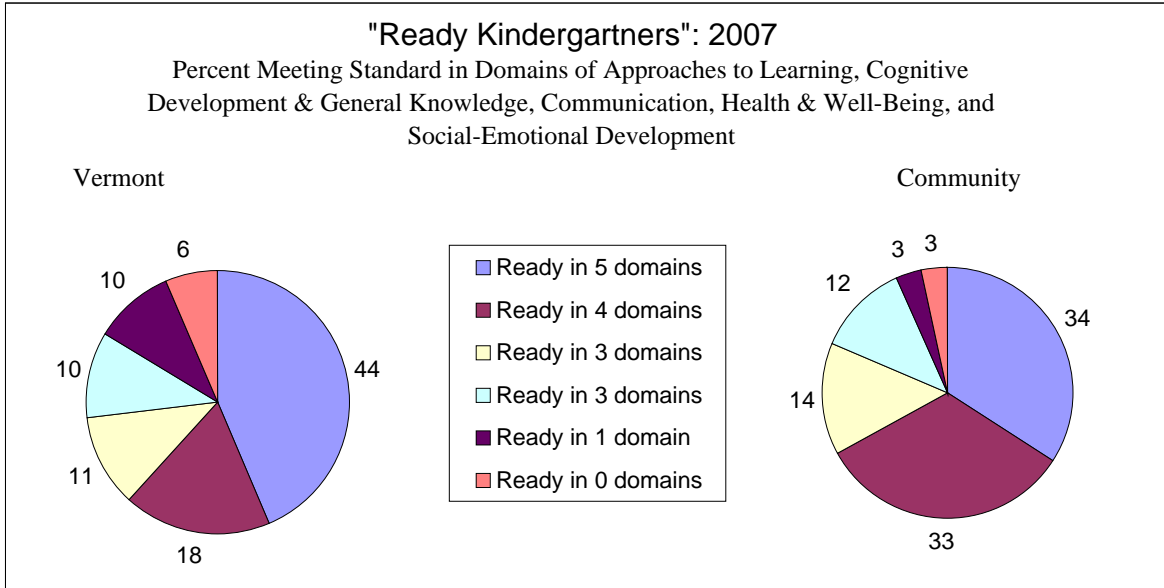
Indicator: *Percent of children screened by 1st grade for vision and hearing problems*

	Vermont	Community	Community
	Rate	Rate	Number
Year: 2007 Vision	100.5	100.0	82
Hearing	100.7	100.0	82



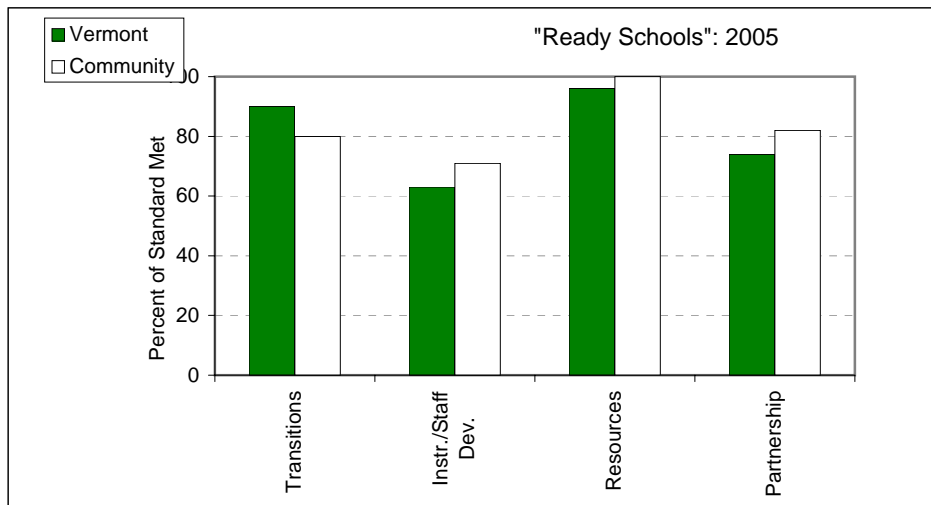
37: Report for the community served by Rutland Central Supervisory Union
 (Includes the towns of Proctor, Rutland Town, West Rutland) County: Rutland; AHS District: Rutland
OUTCOME: CHILDREN ARE READY FOR SCHOOL

Indicator: *Percent of children ready for kindergarten*



Indicator: *"Ready Schools"*

Year: 2005		Vermont Rate	Community Rate
	Smooth Transitions to School	90	80
	Instruction & Staff Development	63	71
	Access to Resources	96	100
	Partnership with Community	74	82

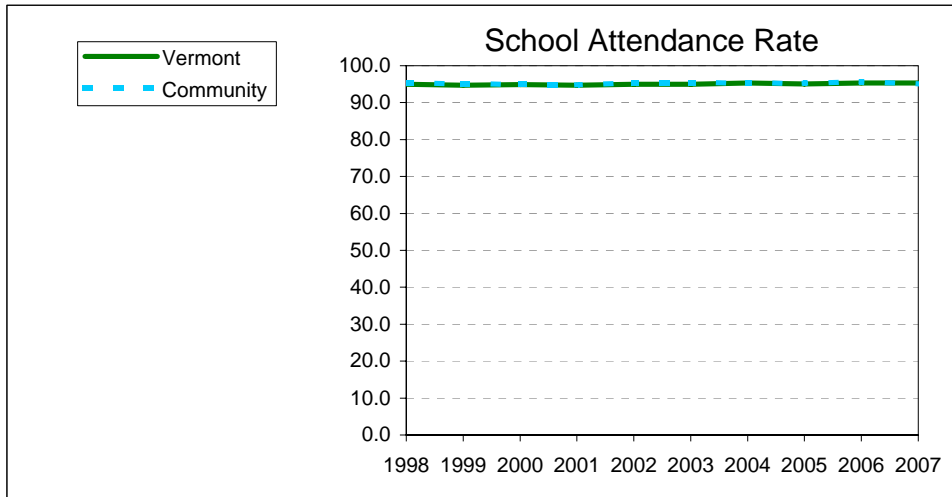


37: Report for the community served by Rutland Central Supervisory Union
 (Includes the towns of Proctor, Rutland Town, West Rutland) County: Rutland; AHS District: Rutland

OUTCOME: CHILDREN SUCCEED IN SCHOOL

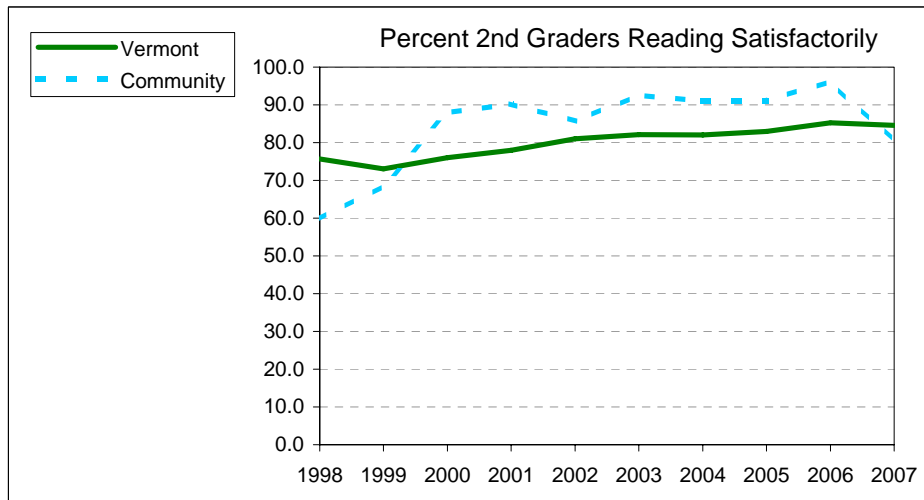
Indicator: School attendance rate (average percent of days attended)

	Vermont Rate	Community Rate
Year: 1998	95	95.3
Year: 2007	95.3	95.1



Indicator: Percent of 2nd graders meeting standard on Developmental Reading Assessment

	Vermont Rate	Community Rate
Year: 1998	76	60
Year: 2007	85	80

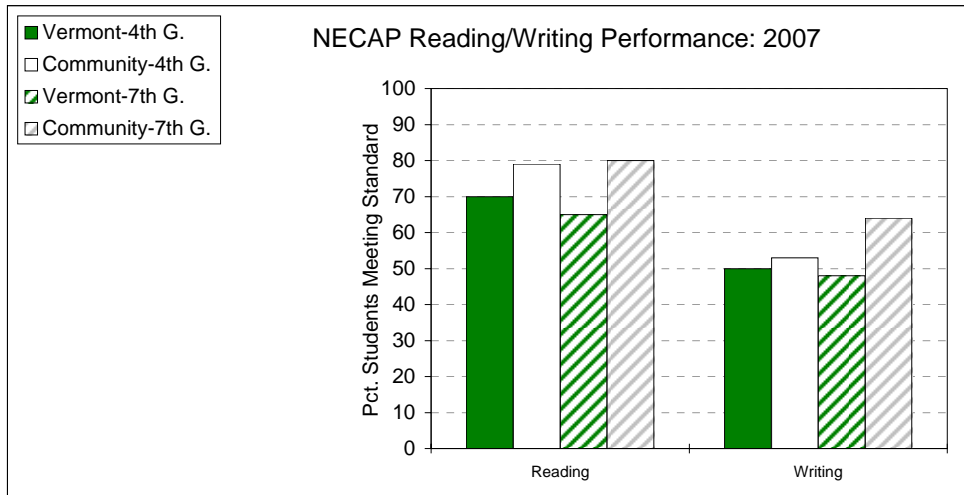


37: Report for the community served by Rutland Central Supervisory Union
 (Includes the towns of Proctor, Rutland Town, West Rutland) County: Rutland; AHS District: Rutland

OUTCOME: CHILDREN SUCCEED IN SCHOOL

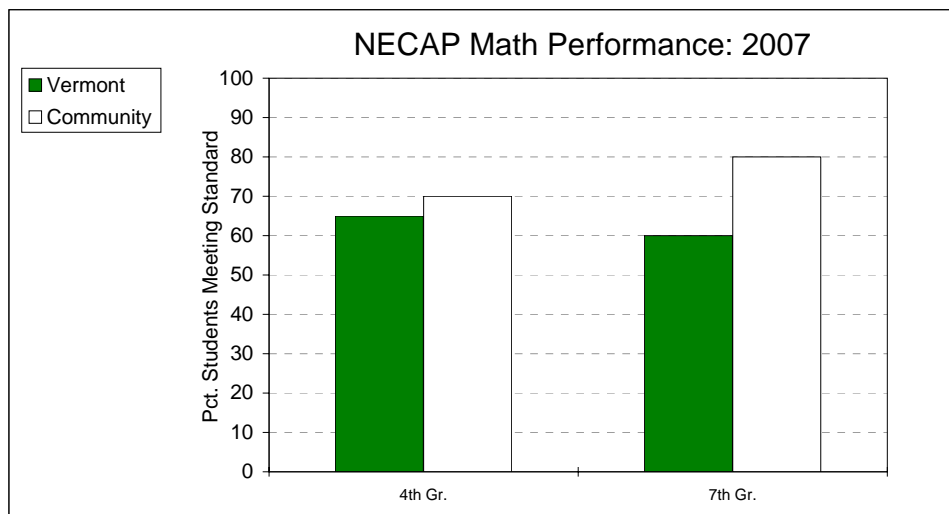
Indicator: *Reading/Writing performance (pct. meeting the standards on the NECAP)*

	<i>Vermont 4th Grade</i>	<i>Community 4th Grade</i>	<i>Vermont 7th Grade</i>	<i>Community 7th Grade</i>
Year: 2007				
Reading	70.0	79.0	65.0	80.0
Writing	50.0	53.0	48.0	64.0



Indicator: *Math performance (pct. meeting the standard on the NECAP)*

	<i>Vermont 4th Grade</i>	<i>Community 4th Grade</i>	<i>Vermont 7th Grade</i>	<i>Community 7th Grade</i>
Year: 2007	65.0	70.0	60.0	80.0

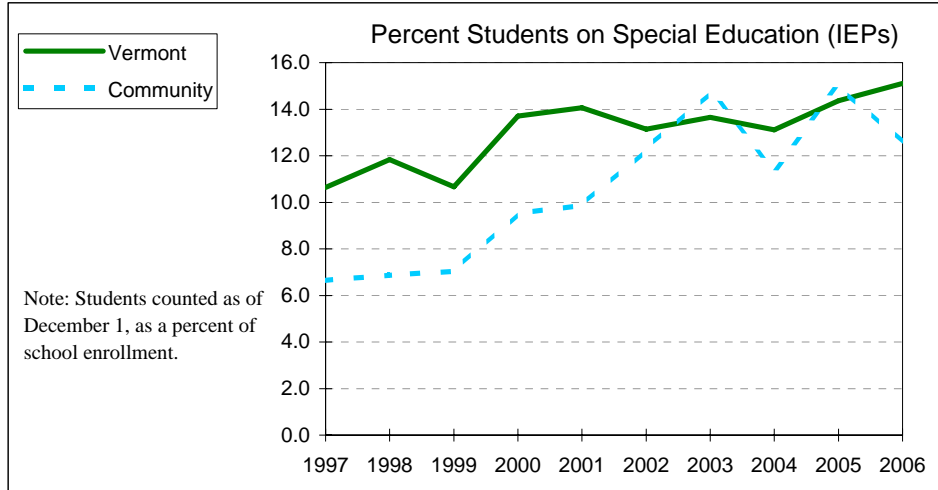


37: Report for the community served by Rutland Central Supervisory Union
 (Includes the towns of Proctor, Rutland Town, West Rutland) County: Rutland; AHS District: Rutland

OUTCOME: CHILDREN SUCCEED IN SCHOOL

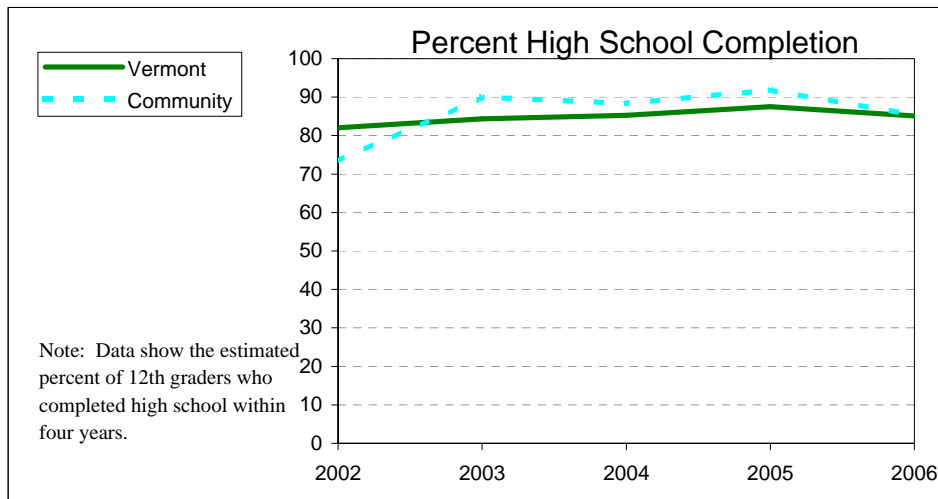
Indicator: *Percent of students with special education IEPs (Individualized Education Plans)*

	<i>Vermont Rate</i>	<i>Community Rate</i>	<i>Community Number</i>
Year: 1997	10.6	6.6	n/a
Year: 2006	15.1	12.6	151



Indicator: *Estimated percent high school completion*

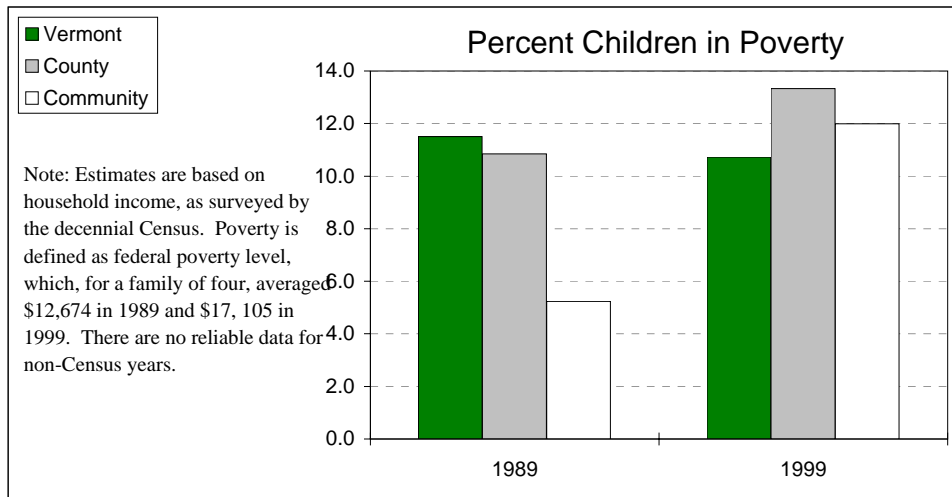
	<i>Vermont Rate</i>	<i>Community Rate</i>	<i>Community Number</i>
Year: 2002	82	73	40
Year: 2006	85	85	52



37: Report for the community served by Rutland Central Supervisory Union
 (Includes the towns of Proctor, Rutland Town, West Rutland) County: Rutland; AHS District: Rutland
OUTCOME: CHILDREN LIVE IN STABLE, SUPPORTED FAMILIES

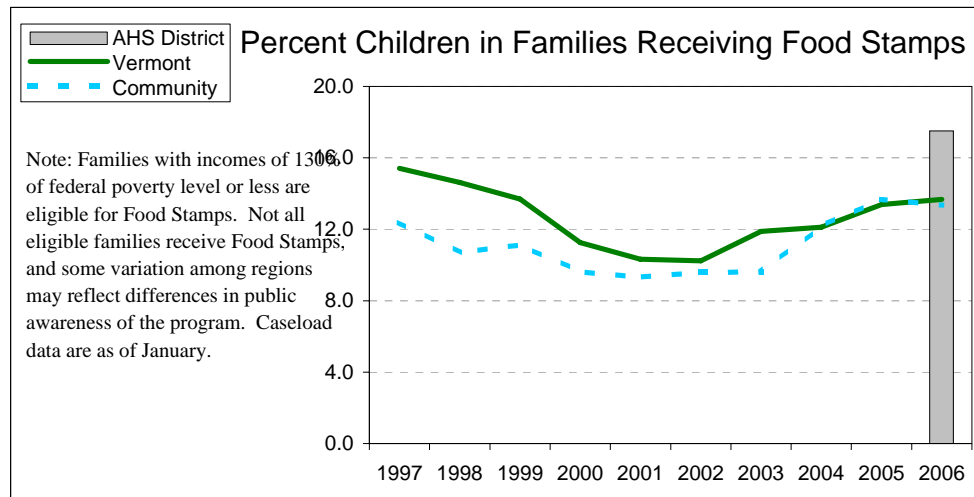
Indicator: *Percent children in poverty*

	Vermont Rate	County Rate	Community Rate	Community Number
Year: 1989	11.5	10.8	5.2	108
Year: 1999	10.7	13.3	12.0	233



Indicator: *Percent children in families receiving Food Stamps (proxy for children in poverty)*

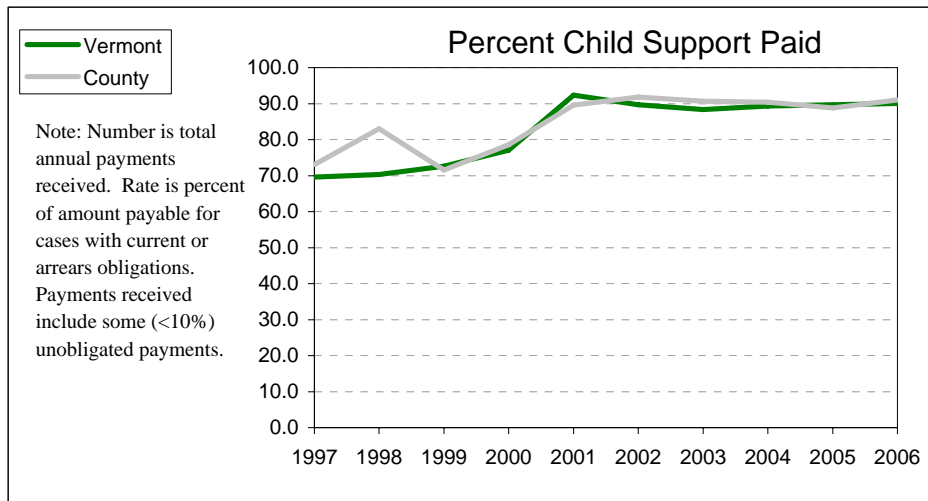
	Vermont Rate	AHS Dist. Rate	Community Rate	Community Number
Year: 1997	15.4	n/a	12.4	240
Year: 2006	13.7	17.5	13.4	216



37: Report for the community served by Rutland Central Supervisory Union
 (Includes the towns of Proctor, Rutland Town, West Rutland) County: Rutland; AHS District: Rutland
OUTCOME: CHILDREN LIVE IN STABLE, SUPPORTED FAMILIES

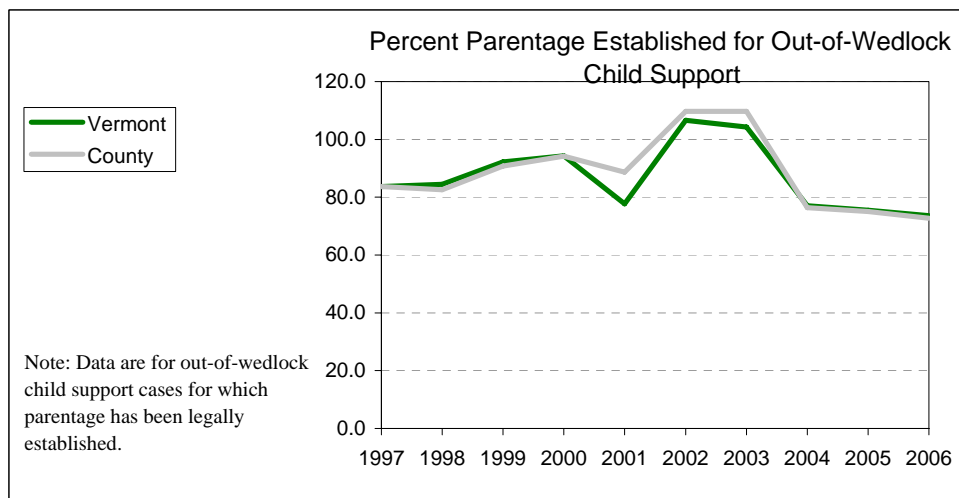
Indicator: *Percent child support paid*

	<i>Vermont</i>	<i>County</i>	<i>County</i>
	<i>Rate</i>	<i>Rate</i>	<i>Number</i>
Year: 1997	69.6	73.0	\$3,907,920
Year: 2006	90.0	91.1	\$5,420,099



Indicator: *Percent parentage established for out-of-wedlock child support cases*

	<i>Vermont</i>	<i>County</i>	<i>County</i>
	<i>Rate</i>	<i>Rate</i>	<i>Number</i>
Year: 1997	83.7	83.7	879
Year: 2006	73.6	72.7	1,432

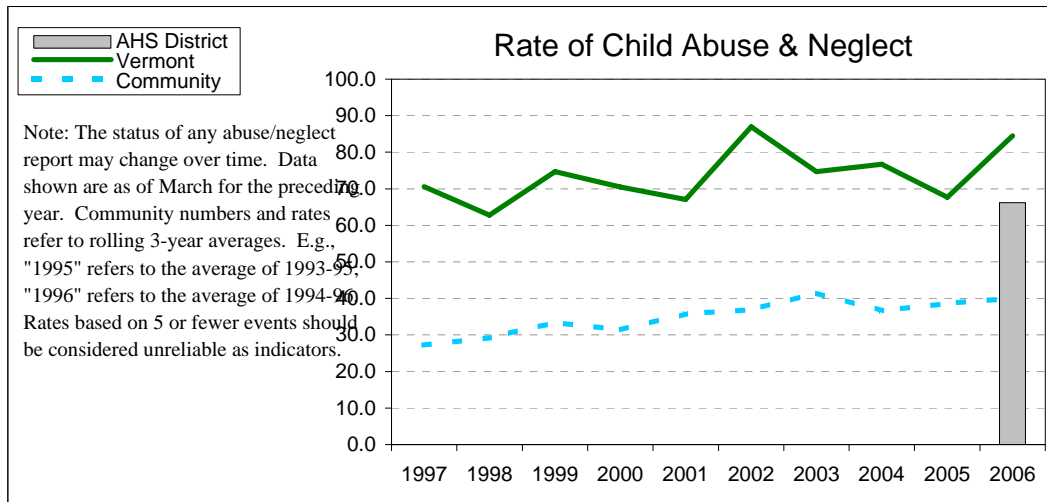


37: Report for the community served by Rutland Central Supervisory Union
 (Includes the towns of Proctor, Rutland Town, West Rutland) County: Rutland; AHS District: Rutland

OUTCOME: CHILDREN LIVE IN STABLE, SUPPORTED FAMILIES

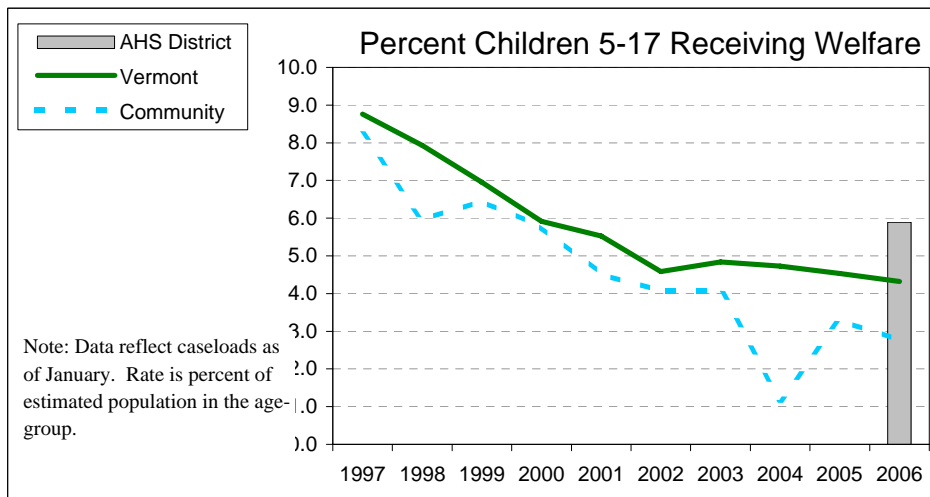
Indicator: *Child abuse and neglect (substantiated victims per 10,000 children aged 0-17)*

	Vermont	AHS Dist.	Community	Community
	Rate	Rate	Rate	Number
Year: 1997	70.6	n/a	27.2	5
Year: 2006	84.5	66.2	40.0	7



Indicator: *Percent of children (ages 5-17 years) in families receiving welfare (Reach Up)*

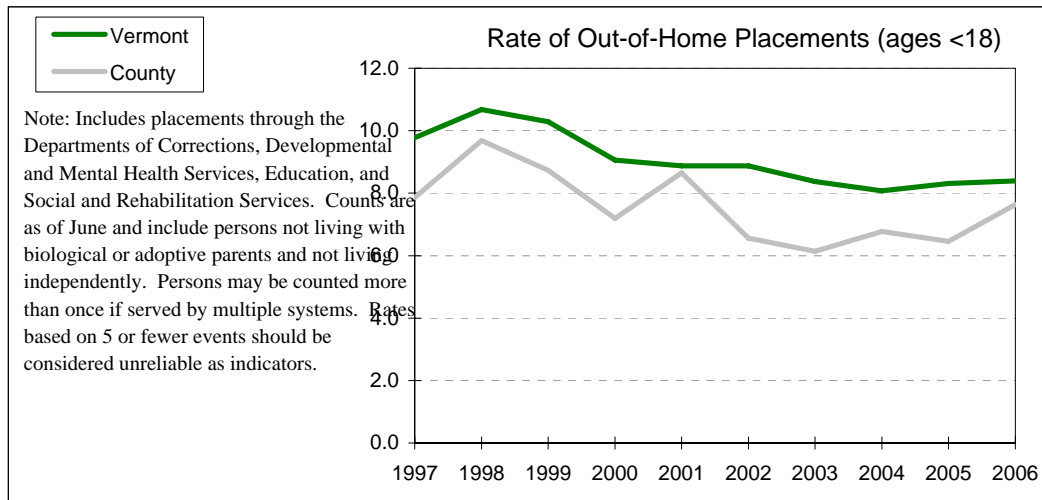
	Vermont	AHS Dist.	Community	Community
	Rate	Rate	Rate	Number
Year: 1997	8.8	n/a	8.2	125
Year: 2006	4.3	5.9	2.8	35



37: Report for the community served by Rutland Central Supervisory Union
 (Includes the towns of Proctor, Rutland Town, West Rutland) County: Rutland; AHS District: Rutland
OUTCOME: CHILDREN LIVE IN STABLE, SUPPORTED FAMILIES

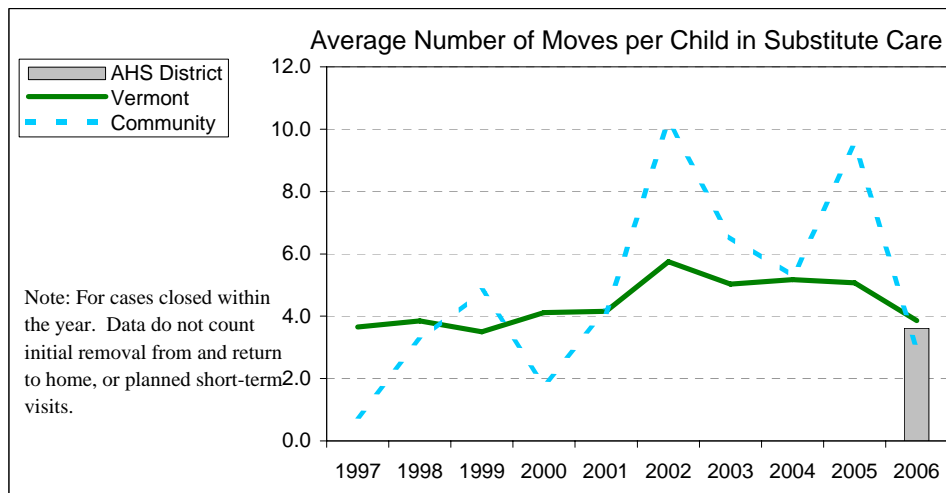
Indicator: *Out-of-home placements, ages < 18 yrs. (rate is per 1,000 population)*

	Vermont Rate	County Rate	County Number
Year: 1997	9.8	7.9	116
Year: 2006	8.4	7.6	98



Indicator: *Average number of moves within the child substitute care system*

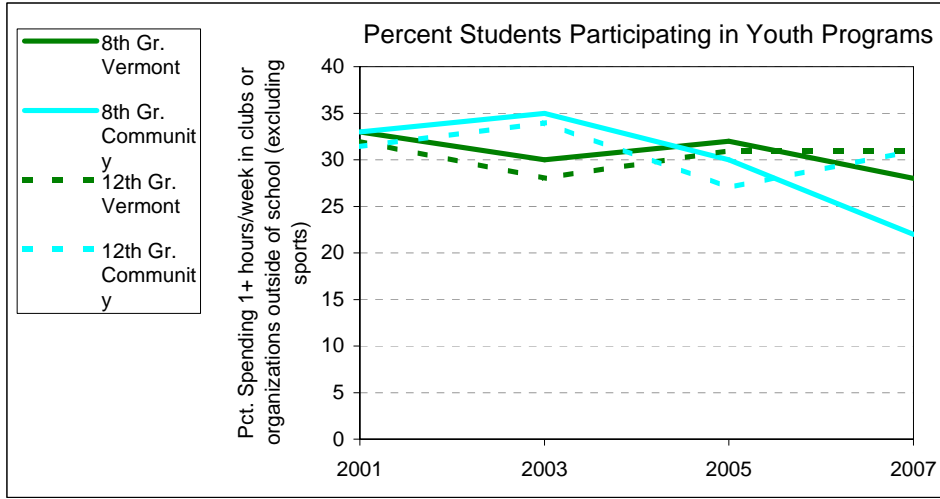
	Vermont Rate	AHS Dist. Rate	Community Rate
Year: 1997	3.7	n/a	0.8
Year: 2006	3.9	3.6	3.0



OUTCOME: YOUTH CHOOSE HEALTHY BEHAVIORS

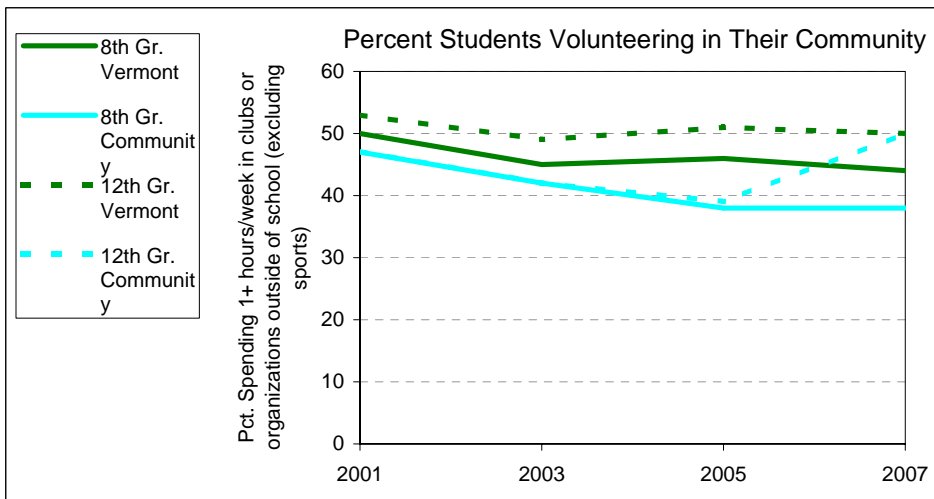
Indicator: *Percent of students participating in youth programs*

		Vermont	Community
		Rate	Rate
Year: 2001	8th Gr.	33	33
	12th Gr.	32	31
Year: 2007	8th Gr.	28	22
	12th Gr.	31	31



Indicator: *Percent of students volunteering in their community*

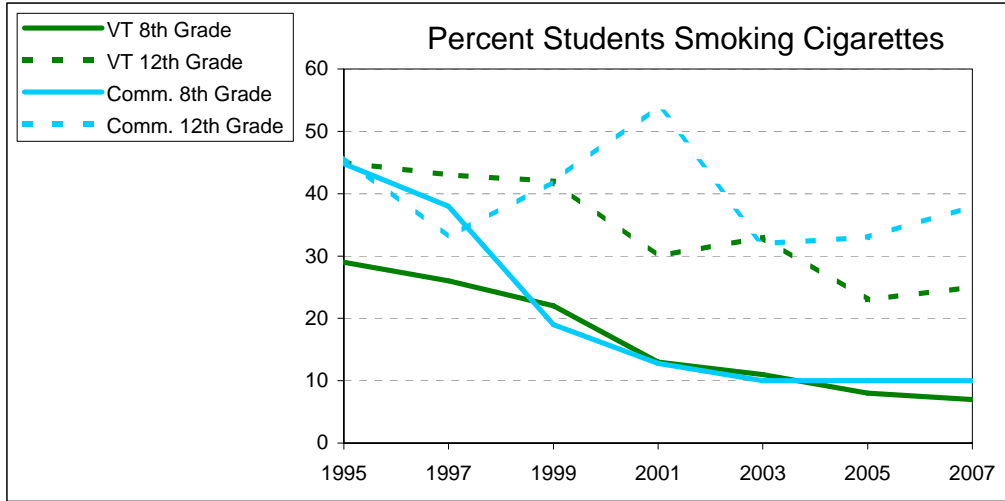
		Vermont	Community
		Rate	Rate
Year: 2001	8th Gr.	50	47
	12th Gr.	53	47
Year: 2007	8th Gr.	44	38
	12th Gr.	50	50



OUTCOME: YOUTH CHOOSE HEALTHY BEHAVIORS

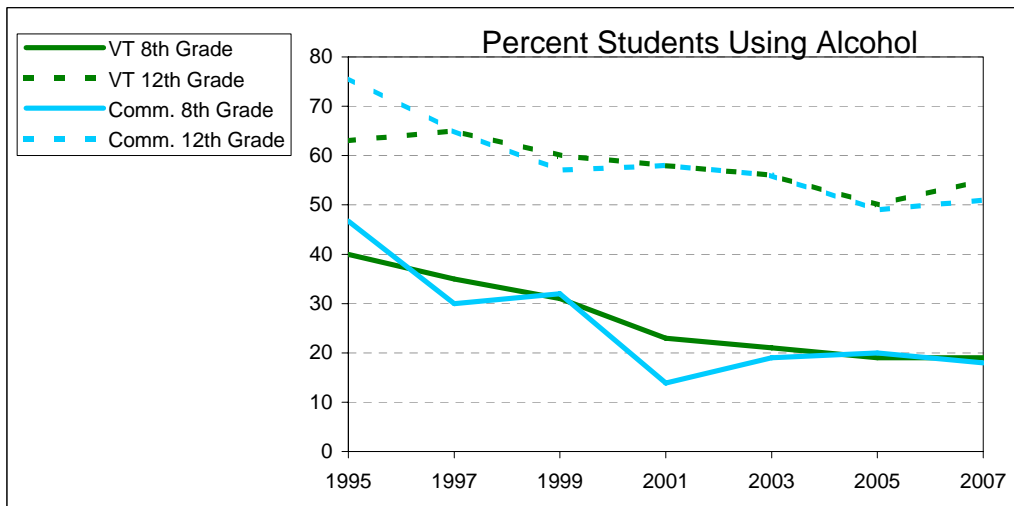
Indicator: *Percent of students smoking cigarettes within past 30 days*

		Vermont	Community
		Rate	Rate
Year: 1995	8th Gr.	29	45
	12th Gr.	45	46
Year: 2007	8th Gr.	7	10
	12th Gr.	25	38



Indicator: *Percent of students using alcohol within past 30 days*

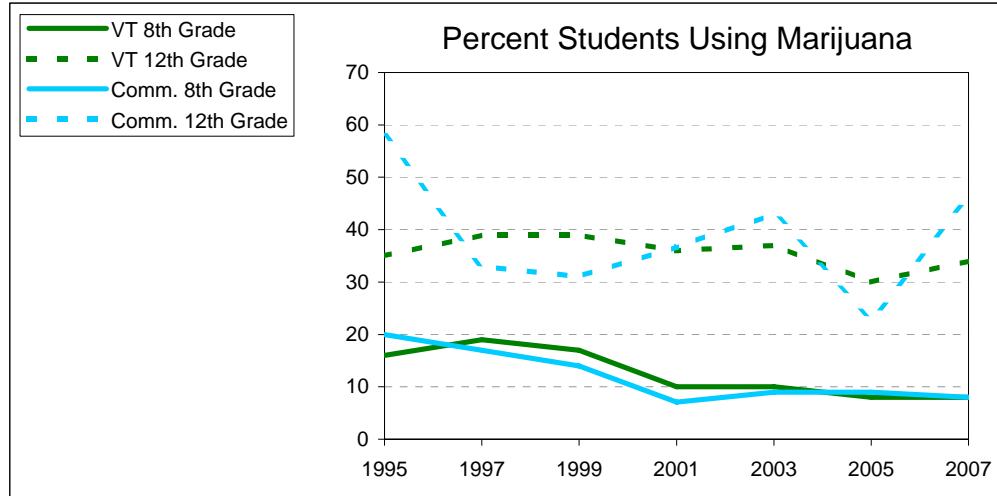
		Vermont	Community
		Rate	Rate
Year: 1995	8th Gr.	40	47
	12th Gr.	63	76
Year: 2007	8th Gr.	19	18
	12th Gr.	55	51



37: Report for the community served by Rutland Central Supervisory Union
 (Includes the towns of Proctor, Rutland Town, West Rutland) County: Rutland; AHS District: Rutland
OUTCOME: YOUTH CHOOSE HEALTHY BEHAVIORS

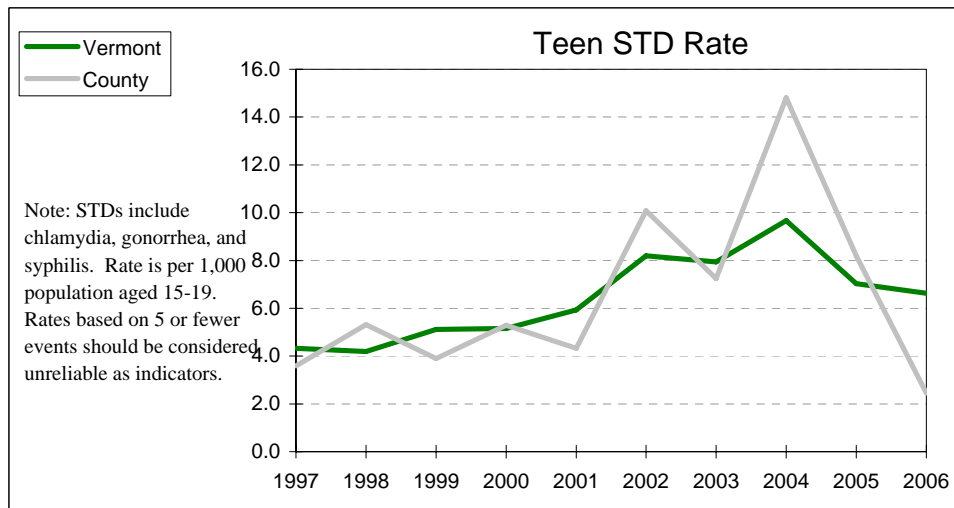
Indicator: *Percent of students using marijuana within past 30 days*

		Vermont Rate	Community Rate
Year: 1995	8th Gr.	16	20
	12th Gr.	35	58
Year: 2007	8th Gr.	8	8
	12th Gr.	34	46



Indicator: *Rate of teen sexually-transmitted diseases (STDs)*

	Vermont Rate	County Rate	County Number
Year: 1997	4.3	3.6	15
Year: 2006	6.6	2.5	11

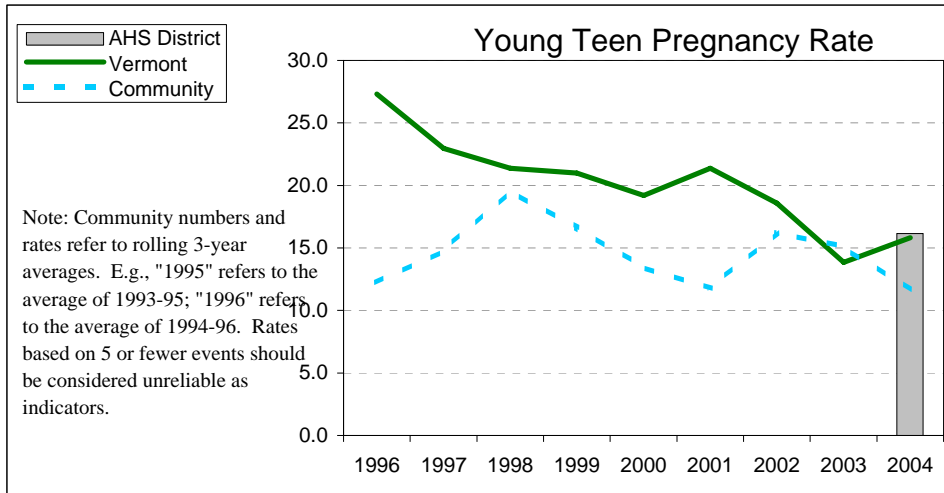


37: Report for the community served by Rutland Central Supervisory Union
 (Includes the towns of Proctor, Rutland Town, West Rutland) County: Rutland; AHS District: Rutland

OUTCOME: YOUTH CHOOSE HEALTHY BEHAVIORS

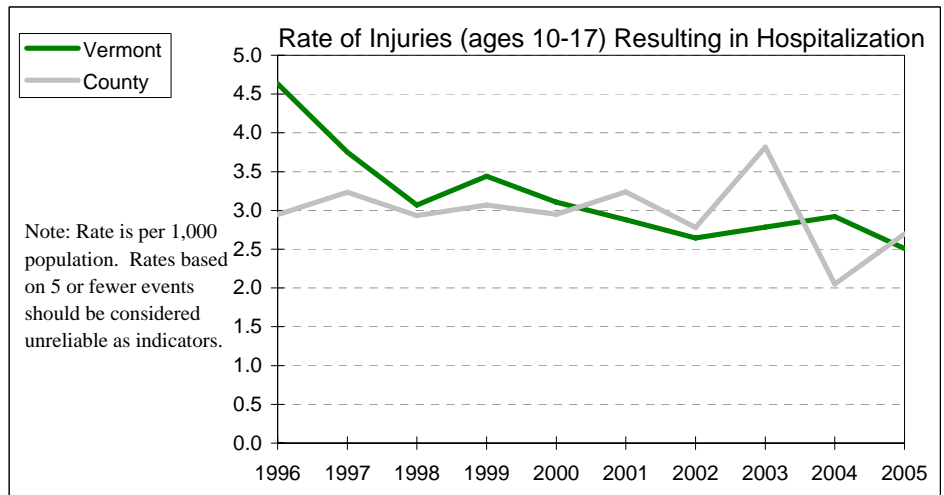
Indicator: *Young teen pregnancy rate (ages 15-17; rate is per 1,000 female population)*

	<i>Vermont</i>	<i>AHS Dist.</i>	<i>Community</i>	<i>Community</i>
	<i>Rate</i>	<i>Rate</i>	<i>Rate</i>	<i>Number</i>
Year: 1996	27.3	n/a	12.2	2
Year: 2004	15.8	16.2	5.2	1



Indicator: *Rate of injuries (ages 10-17) resulting in hospitalization*

	<i>Vermont</i>	<i>County</i>	<i>County</i>
	<i>Rate</i>	<i>Rate</i>	<i>Number</i>
Year: 1996	4.6	2.9	21
Year: 2005	2.5	2.7	18

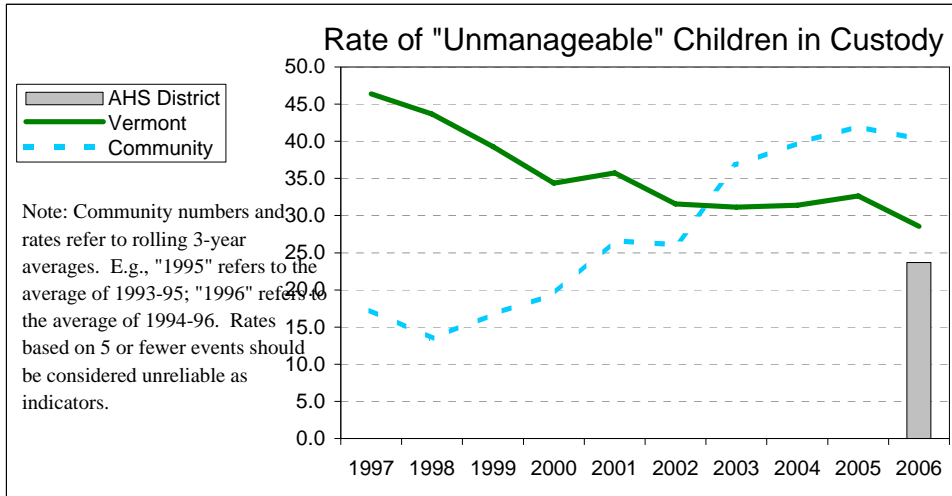


37: Report for the community served by Rutland Central Supervisory Union
 (Includes the towns of Proctor, Rutland Town, West Rutland) County: Rutland; AHS District: Rutland

OUTCOME: YOUTH CHOOSE HEALTHY BEHAVIORS

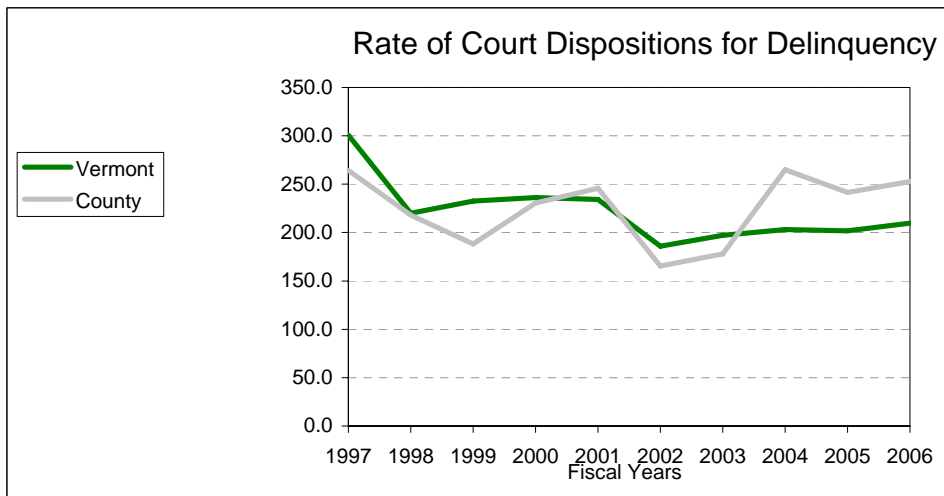
Indicator: Custody rate for children deemed "unmanageable"(per 10,000 children aged 10-17)

	Vermont Rate	AHS Dist. Rate	Community Rate	Community Number
Year: 1997	46.4	n/a	17.2	2
Year: 2006	28.5	23.7	40.2	4



Indicator: Rate of court dispositions for delinquency (per 10,000 children aged 10-17)

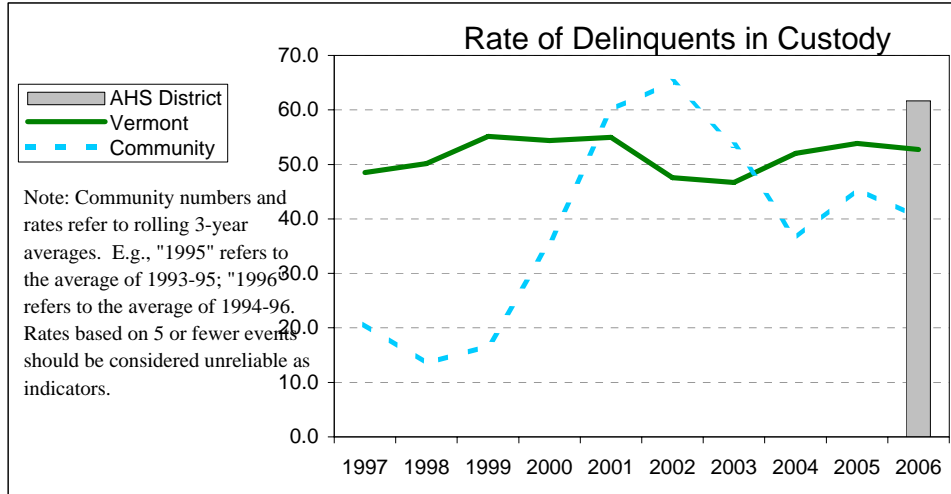
	Vermont Rate	County Rate	County Number
Year: 1997	300.6	264.3	188
Year: 2006	209.9	252.8	164



37: Report for the community served by Rutland Central Supervisory Union
 (Includes the towns of Proctor, Rutland Town, West Rutland) County: Rutland; AHS District: Rutland
OUTCOME: YOUTH CHOOSE HEALTHY BEHAVIORS

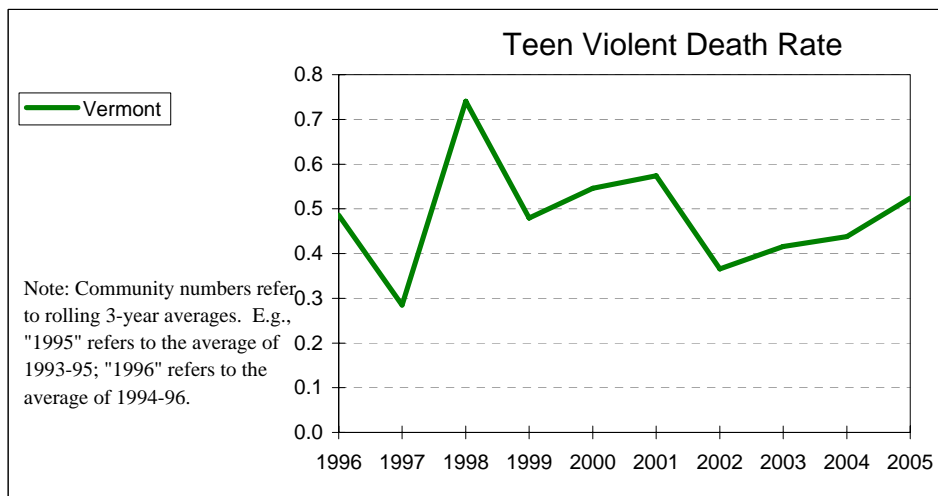
Indicator: Custody rate for children deemed delinquent (per 10,000 children aged 10-17)

	Vermont	AHS Dist.	Community	Community
	Rate	Rate	Rate	Number
Year: 1997	48.5	n/a	20.7	2
Year: 2006	52.7	61.7	40.2	4



Indicator: Teen violent death rate (deaths from injuries, suicides, & homicides)

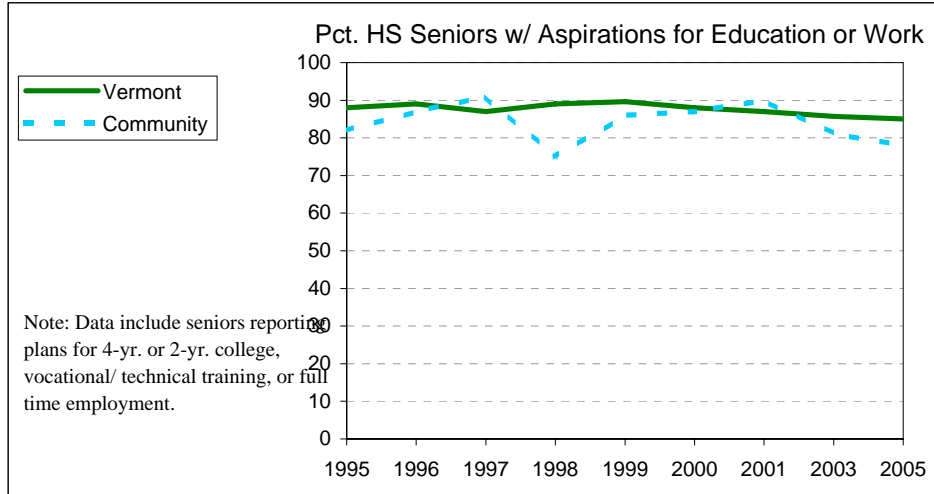
	Vermont	AHS District	Community
	Rate	Number	Number
Year: 1996	0.5	n/a	1
Year: 2005	0.5	4	1



OUTCOME: YOUTH SUCCESSFULLY TRANSITION TO ADULTHOOD

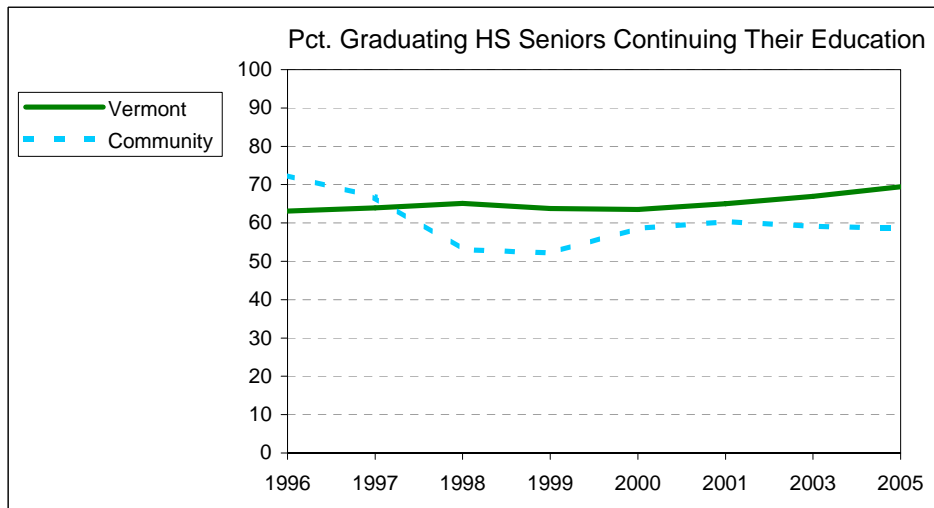
Indicator: *Percent of high school seniors with aspirations for education, vocational training, or employment*

	<i>Vermont</i>	<i>Community</i>
	<i>Rate</i>	<i>Rate</i>
Year: 1995	88	82
Year: 2005	85	78



Indicator: *Percent of graduating high school seniors who continue their education within 6 months*

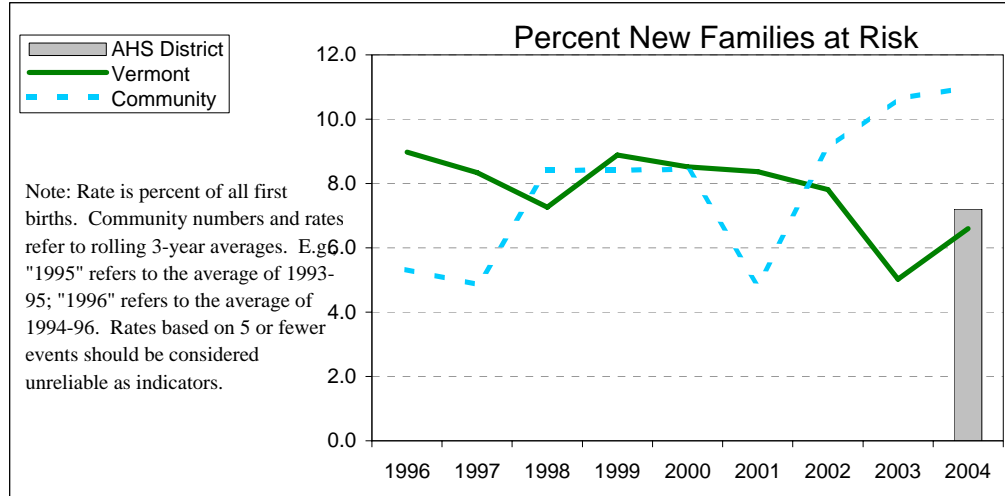
	<i>Vermont</i>	<i>Community</i>
	<i>Rate</i>	<i>Rate</i>
Year: 1996	63	72
Year: 2005	69	59



OUTCOME: YOUTH SUCCESSFULLY TRANSITION TO ADULTHOOD

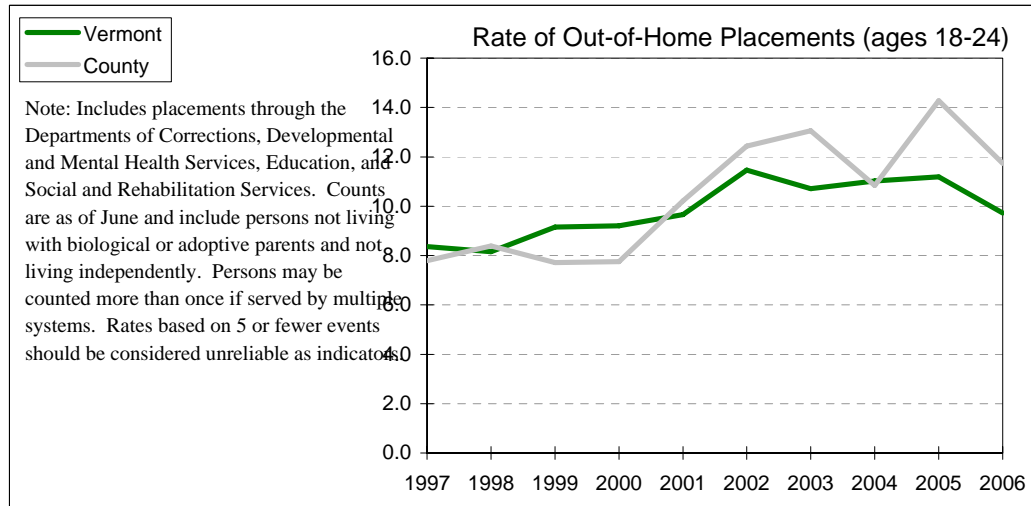
Indicator: *New Families at Risk (first births to unmarried women younger than 20 with less than 12 years education)*

	Vermont	AHS Dist.	Community	Community
	Rate	Rate	Rate	Number
Year: 1996	9.0	n/a	5.3	2
Year: 2004	6.6	7.2	5.3	1



Indicator: *Out-of-home placements, ages 18-24 yrs. (rate is per 1,000 population)*

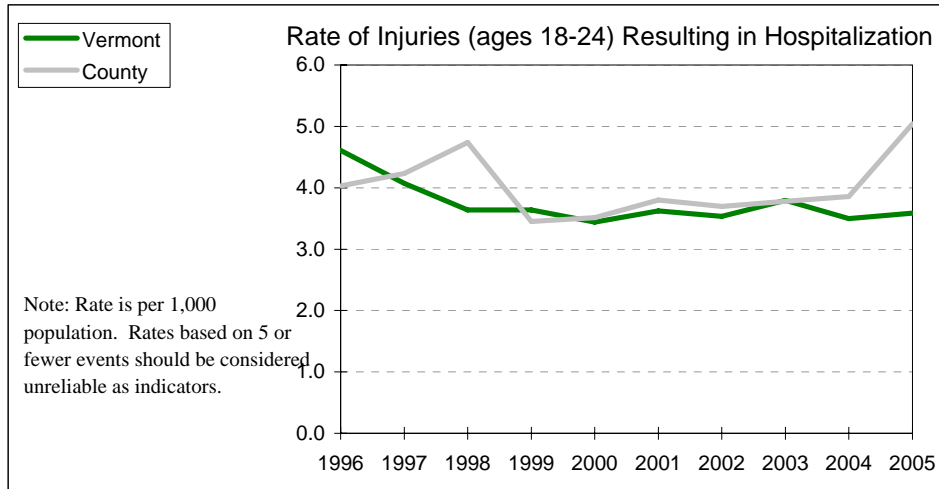
	Vermont	County	County
	Rate	Rate	Number
Year: 1997	8.4	7.8	39
Year: 2006	9.7	11.7	71



OUTCOME: YOUTH SUCCESSFULLY TRANSITION TO ADULTHOOD

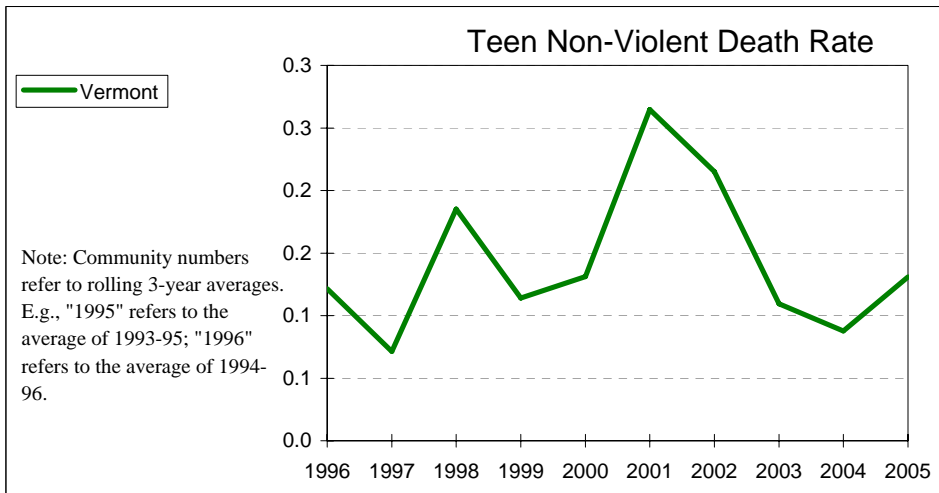
Indicator: *Rate of injuries (ages 18-24) resulting in hospitalization*

	<i>Vermont Rate</i>	<i>County Rate</i>	<i>County Number</i>
Year: 1996	4.6	4.0	134
Year: 2005	3.6	5.0	176



Indicator: *Teen non-violent deaths (ages 15-19; rate is per 1,000 population)*

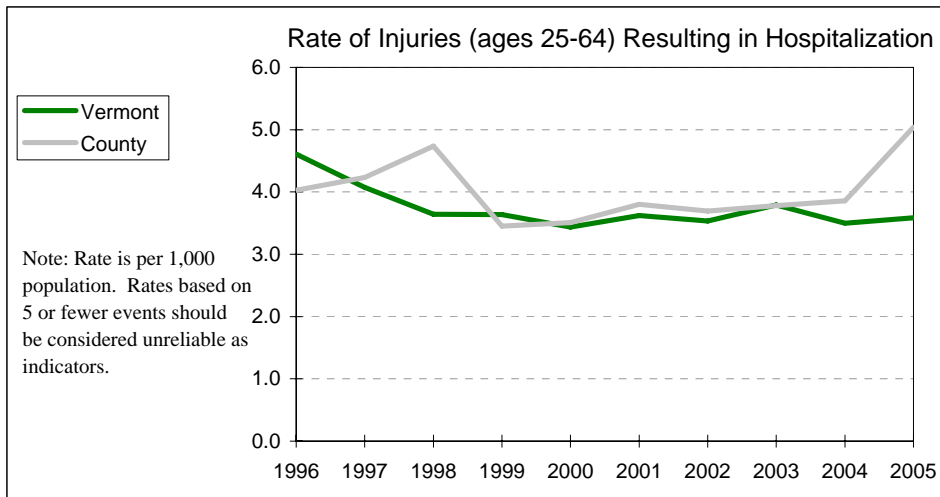
	<i>Vermont Rate</i>	<i>AHS District Number</i>	<i>Community Number</i>
Year: 1996	0.1	n/a	0
Year: 2005	0.1	1	0



37: Report for the community served by Rutland Central Supervisory Union
 (Includes the towns of Proctor, Rutland Town, West Rutland) County: Rutland; AHS District: Rutland
OUTCOME: ADULTS LEAD HEALTHY AND PRODUCTIVE LIVES

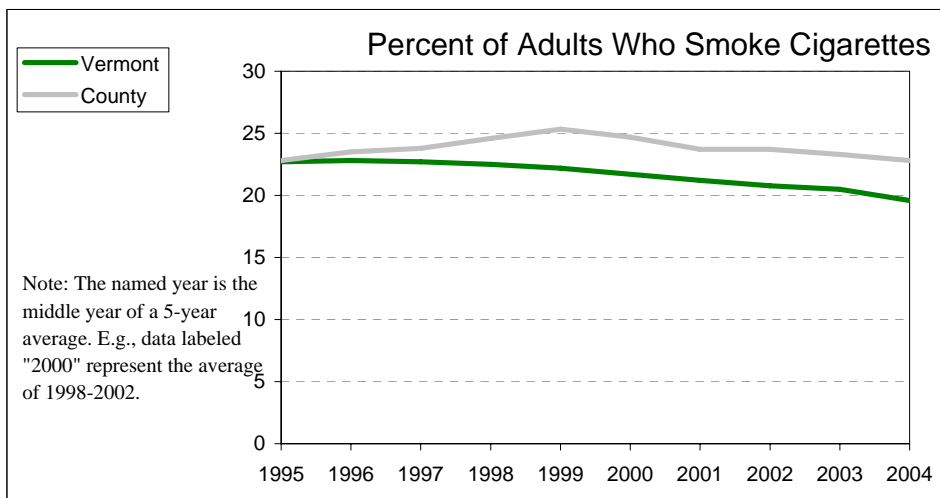
Indicator: *Rate of injuries (ages 25-64) resulting in hospitalization*

	Vermont	County	County
	Rate	Rate	Number
Year: 1996	4.6	4.0	134
Year: 2005	3.6	5.0	176



Indicator: *Percent of adults who smoke cigarettes*

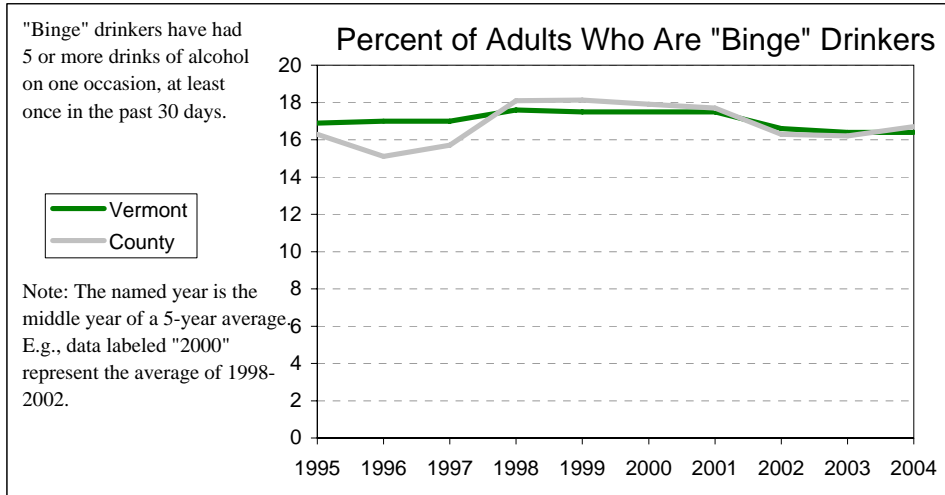
	Vermont	County
	Rate	Rate
Year: 1995	22.7	22.8
Year: 2004	19.6	22.8



37: Report for the community served by Rutland Central Supervisory Union
 (Includes the towns of Proctor, Rutland Town, West Rutland) County: Rutland; AHS District: Rutland
OUTCOME: ADULTS LEAD HEALTHY AND PRODUCTIVE LIVES

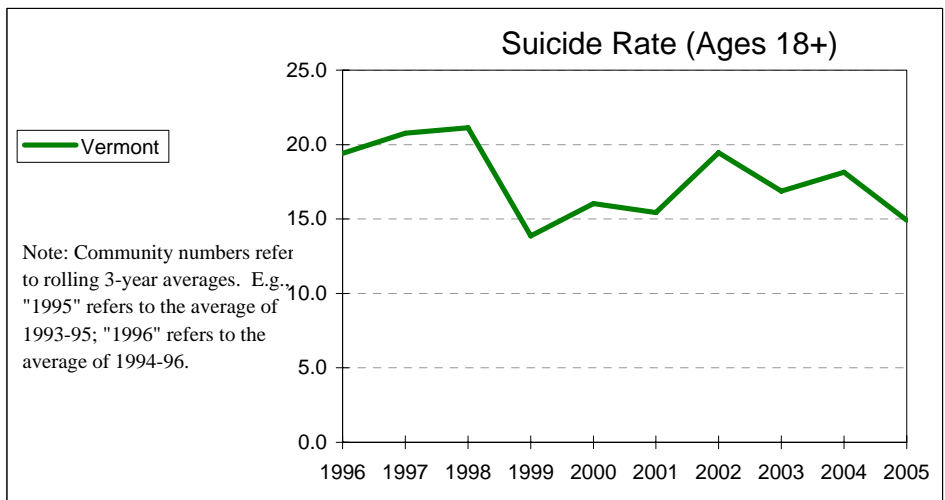
Indicator: *Percent of adults who are "binge" drinkers*

	<i>Vermont</i>	<i>County</i>
	<i>Rate</i>	<i>Rate</i>
Year: 1995	16.9	16.3
Year: 2004	16.4	17



Indicator: *Suicide, ages 18+ (rate is per 100,000 population)*

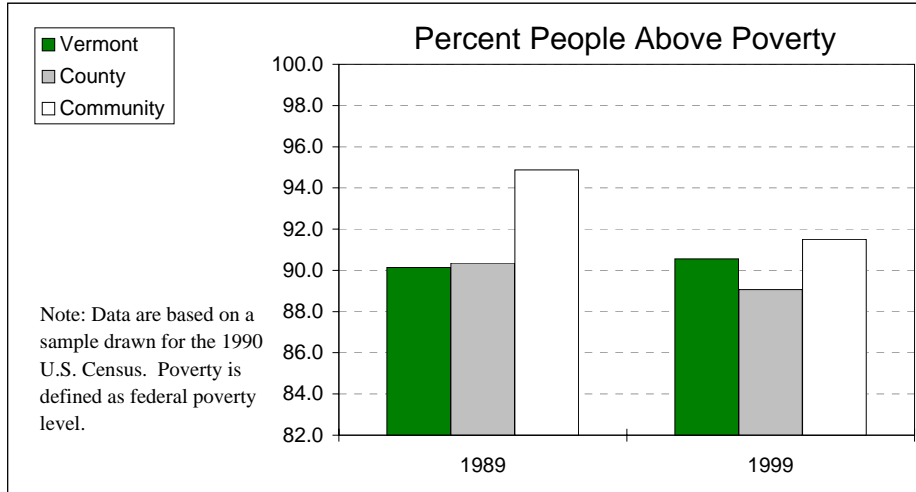
	<i>Vermont</i>	<i>AHS District</i>	<i>Community</i>
	<i>Rate</i>	<i>Number</i>	<i>Number</i>
Year: 1996	19.4	n/a	0
Year: 2005	14.9	5	0



37: Report for the community served by Rutland Central Supervisory Union
 (Includes the towns of Proctor, Rutland Town, West Rutland) County: Rutland; AHS District: Rutland
OUTCOME: ADULTS LEAD HEALTHY AND PRODUCTIVE LIVES

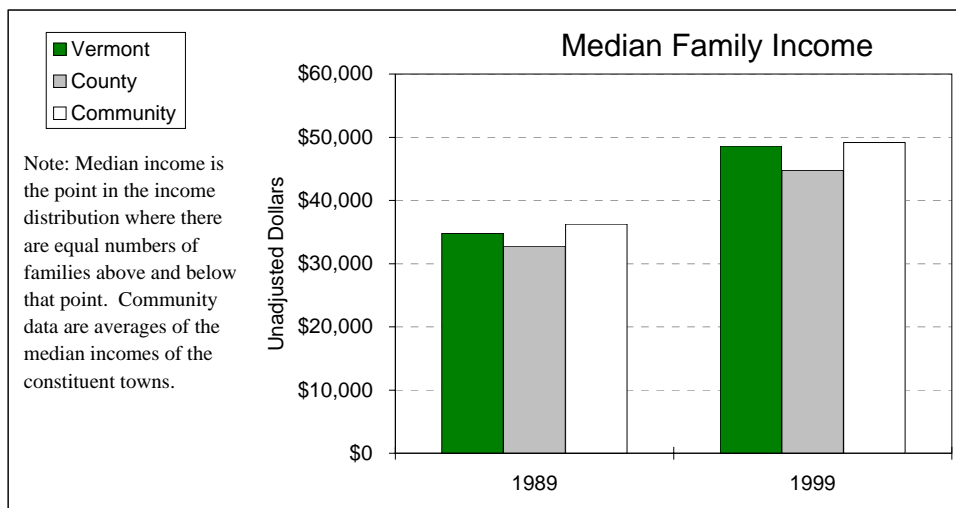
Indicator: *Percent people above poverty level*

	<i>Vermont Rate</i>	<i>County Rate</i>	<i>Community Rate</i>	<i>Community Number</i>
Year: 1989	90.1	90.4	94.9	7,776
Year: 1999	90.6	89.1	91.5	7,653



Indicator: *Median family income*

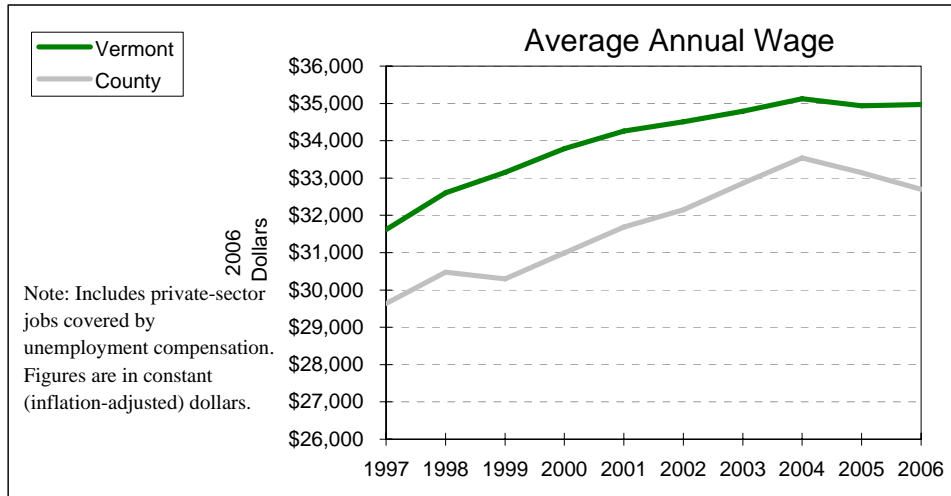
	<i>Vermont Number</i>	<i>County Number</i>	<i>Community Number</i>
Year: 1989	\$34,780	\$32,743	\$36,265
Year: 1999	\$48,625	\$44,742	\$49,178



37: Report for the community served by Rutland Central Supervisory Union
 (Includes the towns of Proctor, Rutland Town, West Rutland) County: Rutland; AHS District: Rutland
OUTCOME: ADULTS LEAD HEALTHY AND PRODUCTIVE LIVES

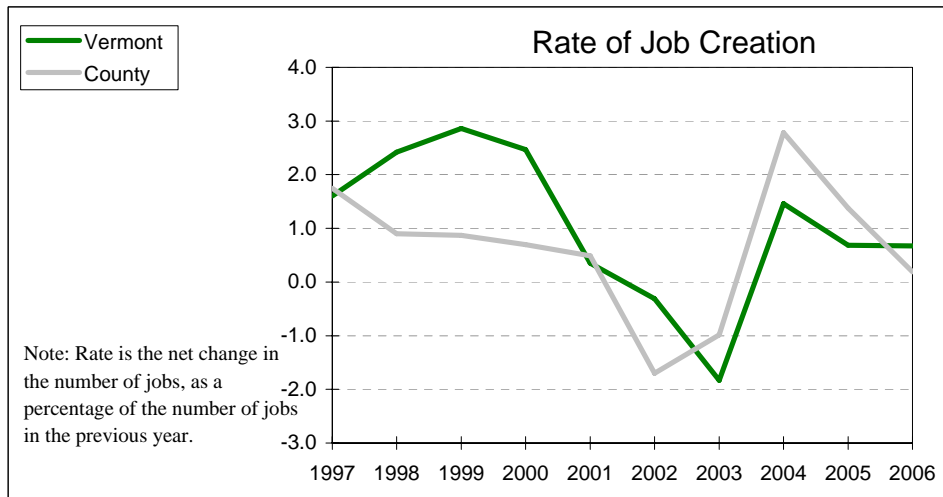
Indicator: Average annual wage

	Vermont Number	County Number
Year: 1997	\$31,615	\$29,640
Year: 2006	\$34,974	\$32,701



Indicator: Rate of job creation (annual percent change in private-sector employment)

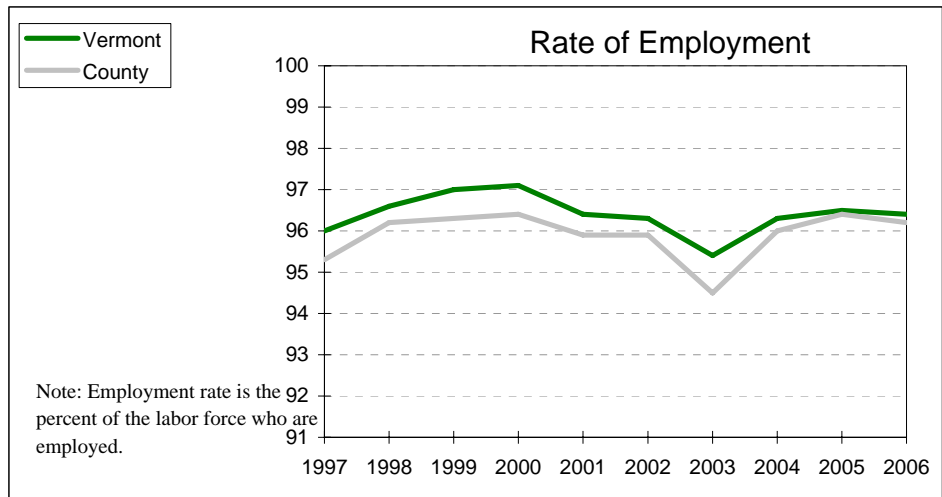
	Vermont Rate	County Rate	County Number
Year: 1997	1.6	1.7	414
Year: 2006	0.7	0.2	48



37: Report for the community served by Rutland Central Supervisory Union
 (Includes the towns of Proctor, Rutland Town, West Rutland) County: Rutland; AHS District: Rutland
OUTCOME: ADULTS LEAD HEALTHY AND PRODUCTIVE LIVES

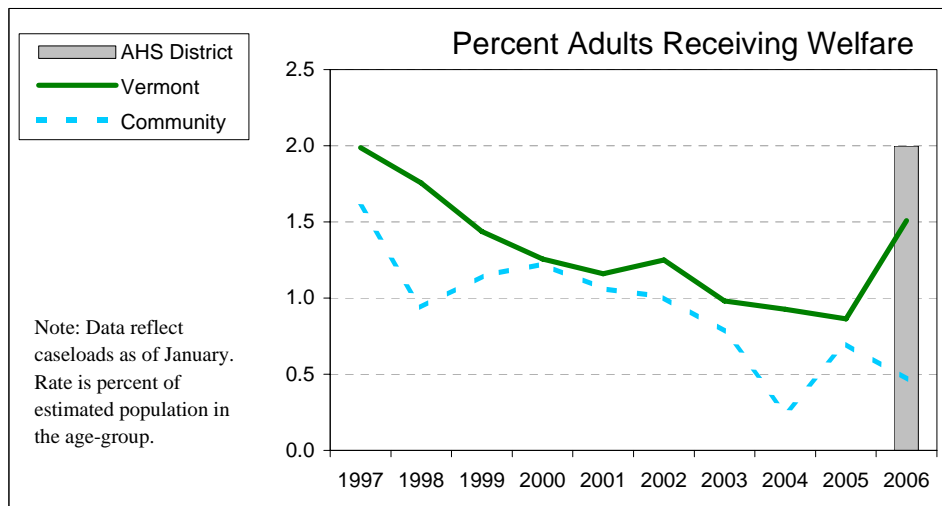
Indicator: *Rate of employment*

	Vermont Rate	County Rate
Year: 1997	96.0	95.3
Year: 2006	96.4	96.2



Indicator: *Percent of adults (ages 18+) receiving welfare (Reach Up)*

	Vermont Rate	AHS Dist. Rate	Community Rate	Community Number
Year: 1997	2.0	n/a	1.6	103
Year: 2006	1.5	2.0	0.5	32

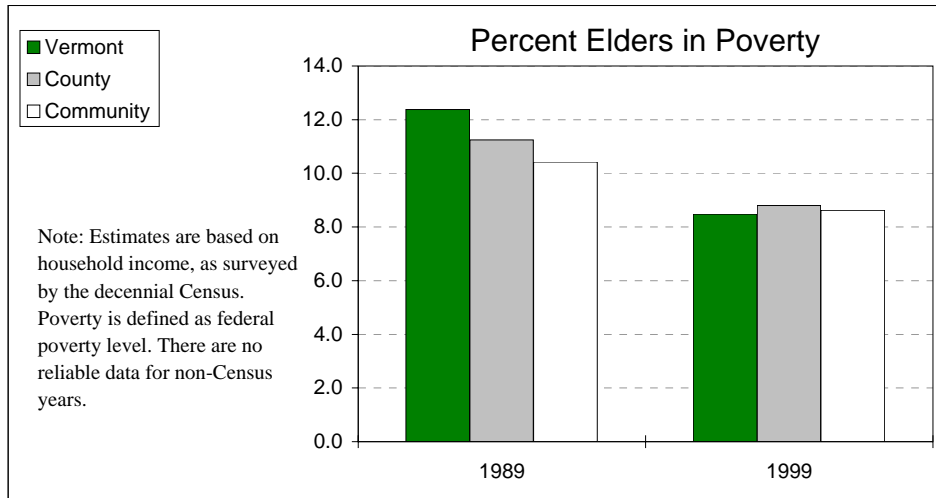


37: Report for the community served by Rutland Central Supervisory Union
 (Includes the towns of Proctor, Rutland Town, West Rutland) County: Rutland; AHS District: Rutland

OUTCOME: ELDERLY AND PEOPLE WITH DISABILITIES LIVE WITH DIGNITY AND INDEPENDENCE IN SETTINGS THEY PREFER

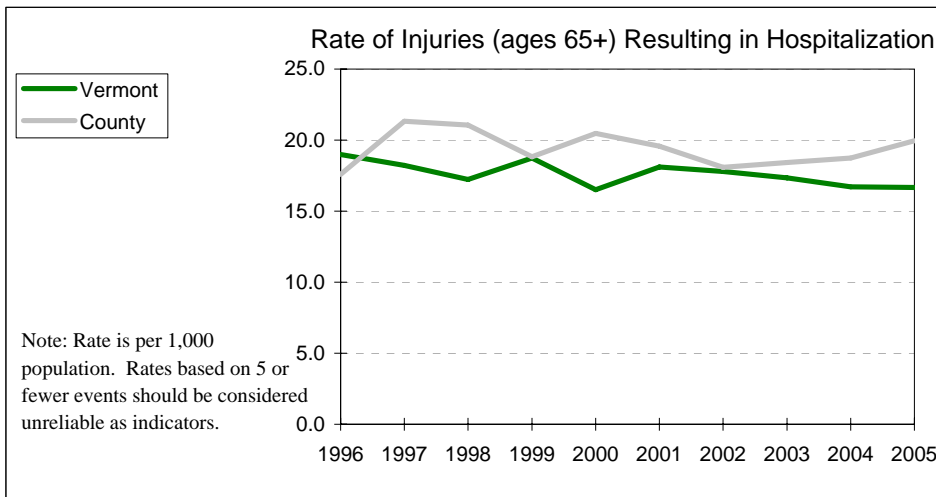
Indicator: *Percent of population aged 65+ in poverty*

	<i>Vermont Rate</i>	<i>County Rate</i>	<i>Community Rate</i>	<i>Community Number</i>
Year: 1989	12.4	11.2	10.4	117
Year: 1999	8.5	8.8	8.6	120



Indicator: *Rate of injuries (ages 65+) resulting in hospitalization*

	<i>Vermont Rate</i>	<i>County Rate</i>	<i>County Number</i>
Year: 1996	19.0	17.6	161
Year: 2005	16.7	19.9	195



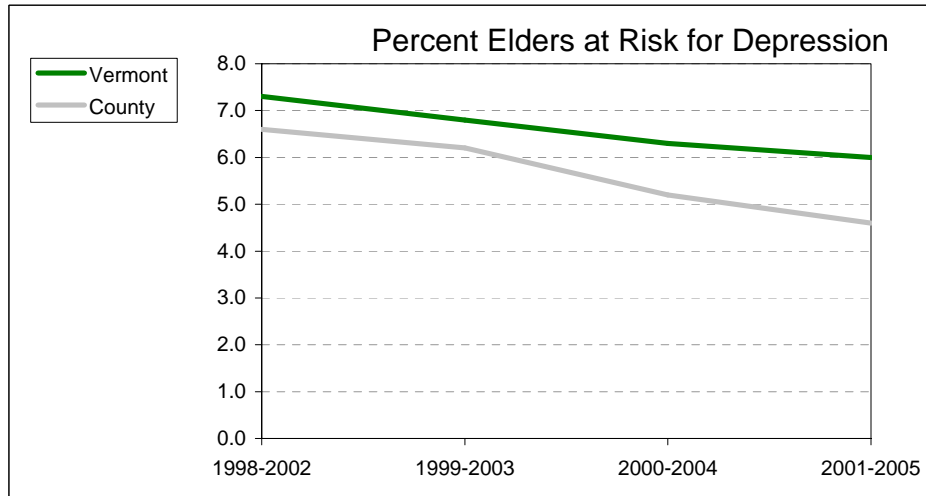
37: Report for the community served by Rutland Central Supervisory Union

(Includes the towns of Proctor, Rutland Town, West Rutland) County: Rutland; AHS District: Rutland

OUTCOME: ELDERS AND PEOPLE WITH DISABILITIES LIVE WITH DIGNITY AND INDEPENDENCE IN SETTINGS THEY PREFER

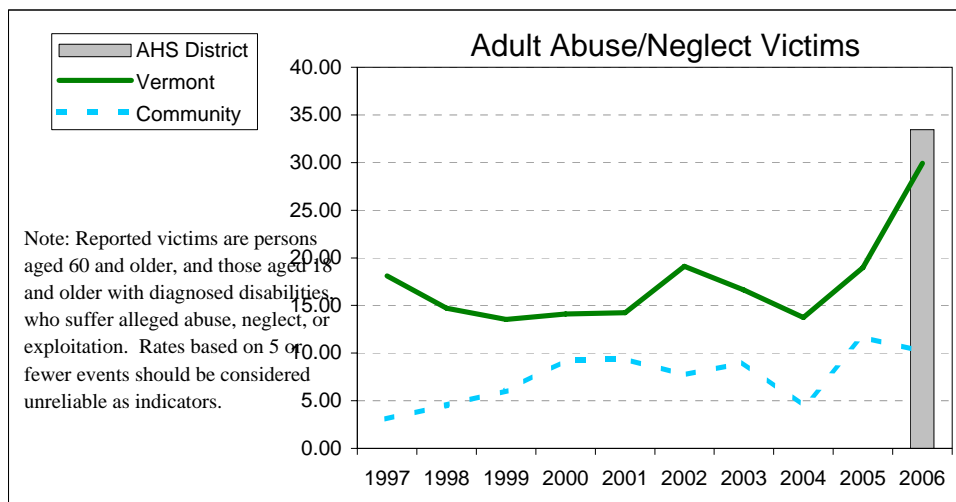
Indicator: *Percent of elders at risk for depression*

	Vermont Rate	County Rate
Year: 1998-2002	7.3	6.6
Year: 2001-2005	6.0	4.6



Indicator: *Rate of adult abuse/neglect (victims per 10,000 people aged 18+)*

	Vermont Rate	AHS Dist. Rate	Community Rate	Community Number
Year: 1997	18.1	n/a	3.1	2
Year: 2006	29.9	33.4	10.2	7

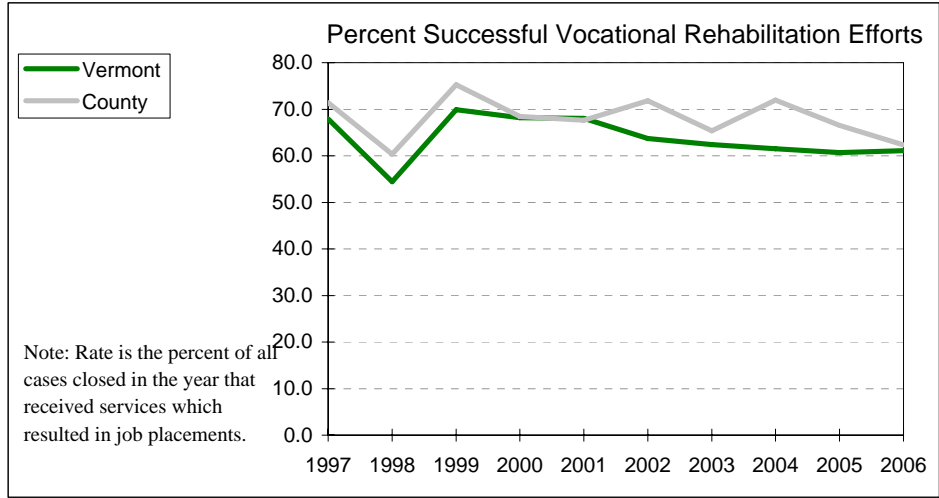


37: Report for the community served by Rutland Central Supervisory Union
 (Includes the towns of Proctor, Rutland Town, West Rutland) County: Rutland; AHS District: Rutland

OUTCOME: ELDERSD AND PEOPLE WITH DISABILITIES LIVE WITH DIGNITY AND INDEPENDENCE IN SETTINGS THEY PREFER

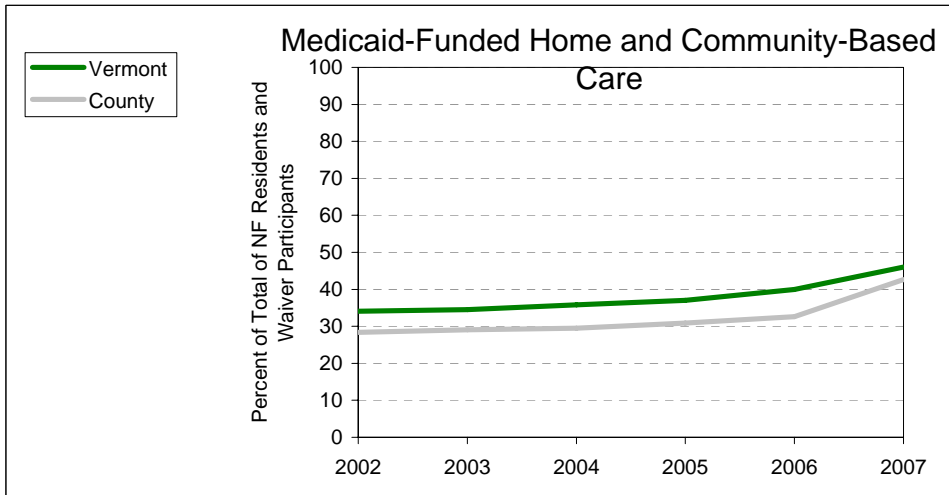
Indicator: *Percent successful job placements among consumers of Vocational Rehabilitation services*

	<i>Vermont Rate</i>	<i>County Rate</i>	<i>County Number</i>
Year: 1997	67.9	71.4	120
Year: 2006	61.1	62.3	167



Indicator: *Balance of institutional and home & community-based ("waiver") options for long-term care*

	<i>Vermont Vermont Pct. NF Residents</i>	<i>Vermont Pct. Waiver Participants</i>	<i>County Pct. NF Residents</i>	<i>County Pct. Waiver Participants</i>
Year: 2002	66	34	72	28
Year: 2007	54	46	57	43

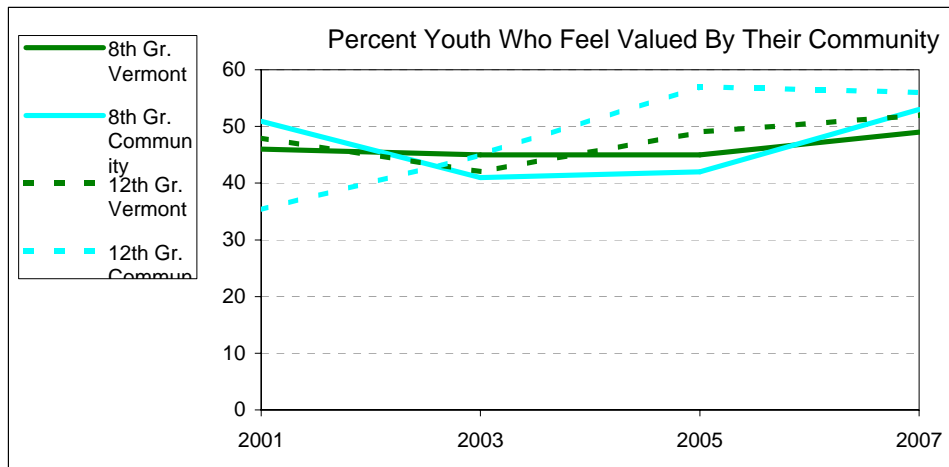


37: Report for the community served by Rutland Central Supervisory Union
 (Includes the towns of Proctor, Rutland Town, West Rutland) County: Rutland; AHS District: Rutland

OUTCOME: COMMUNITIES PROVIDE SAFETY AND SUPPORT FOR FAMILIES AND INDIVIDUALS

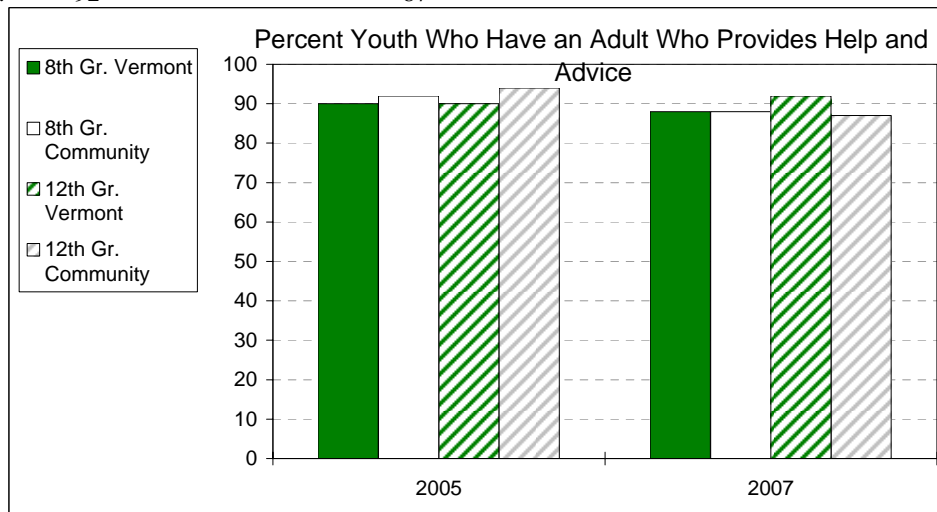
Indicator: *Percent of youth who report they are valued by their community*

		Vermont Rate	Community Rate
Year: 2001	8th Gr.	46	51
	12th Gr.	48	35
Year: 2007	8th Gr.	49	53
	12th Gr.	52	56



Indicator: *Percent of youth who report they have one or more adults to whom they can usually turn for help and advice.*

		Vermont Rate	Community Rate
Year: 2005	8th Gr.	90	92
	12th Gr.	90	94
Year: 2007	8th Gr.	88	88
	12th Gr.	92	87

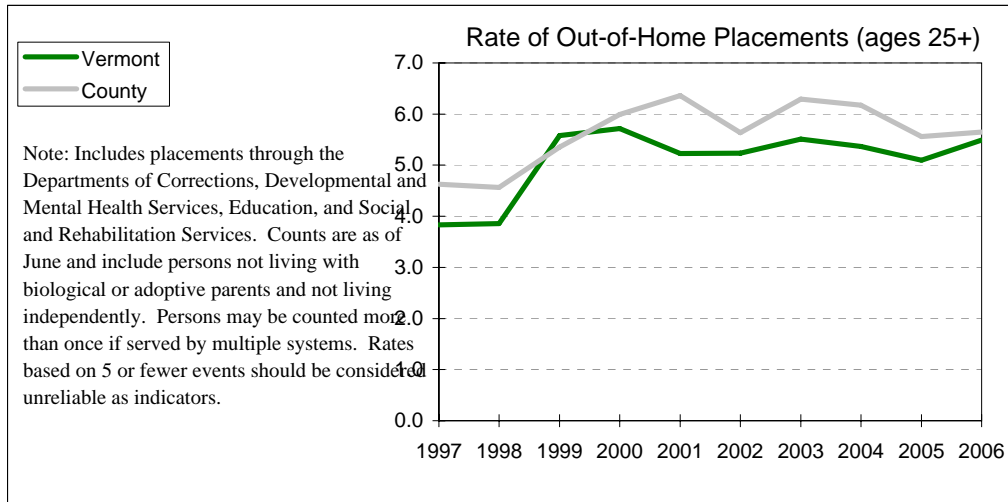


37: Report for the community served by Rutland Central Supervisory Union
 (Includes the towns of Proctor, Rutland Town, West Rutland) County: Rutland; AHS District: Rutland

OUTCOME: COMMUNITIES PROVIDE SAFETY AND SUPPORT FOR FAMILIES AND INDIVIDUALS

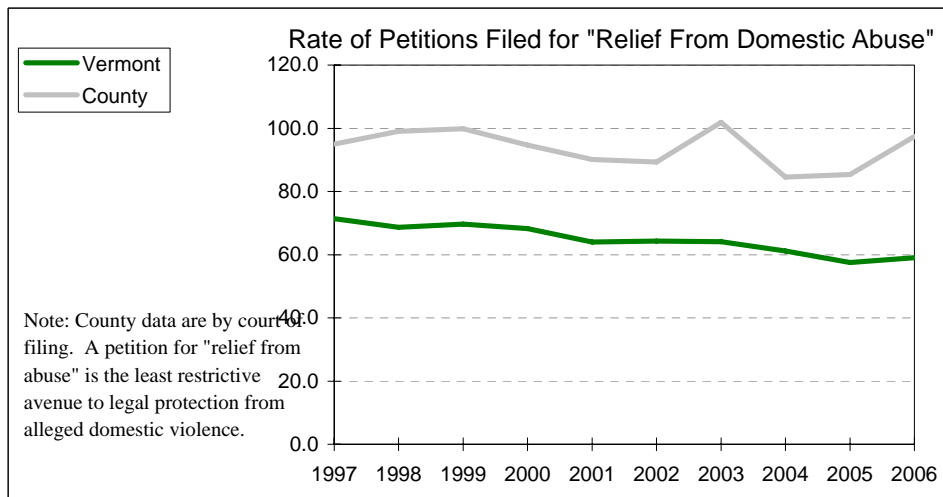
Indicator: *Out-of-home placements, ages 25+ yrs. (rate is per 1,000 population)*

	Vermont Rate	County Rate	County Number
Year: 1997	3.8	4.6	198
Year: 2006	5.5	5.6	287



Indicator: *Court petitions filed for Relief From Domestic Abuse (rate is per 10,000 population)*

	Vermont Rate	County Rate	County Number
Year: 1997	71.4	95.0	594
Year: 2006	59.0	97.4	620

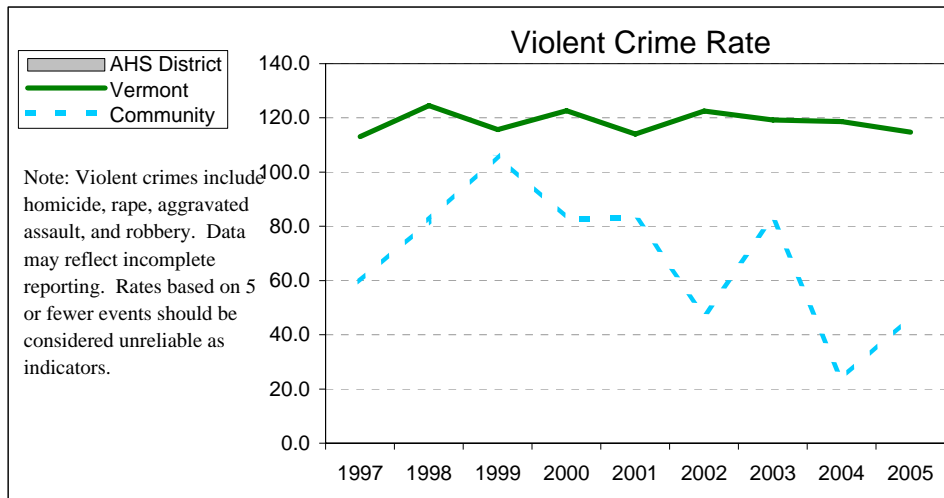


37: Report for the community served by Rutland Central Supervisory Union
 (Includes the towns of Proctor, Rutland Town, West Rutland) County: Rutland; AHS District: Rutland

OUTCOME: COMMUNITIES PROVIDE SAFETY AND SUPPORT FOR FAMILIES AND INDIVIDUALS

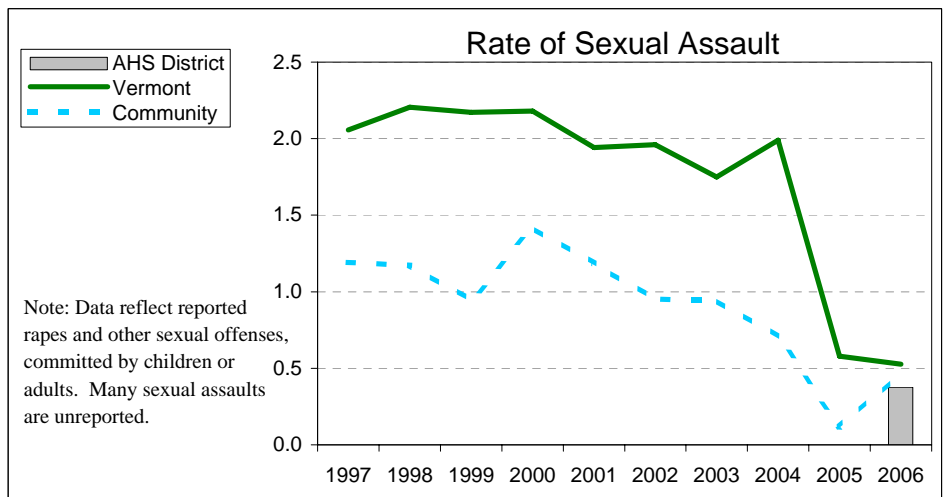
Indicator: *Violent crime (rate is per 100,000 population)*

	Vermont Rate	AHS Dist. Rate	Community Rate	Community Number
Year: 1997	113.1	n/a	59.6	5
Year: 2006	128.2	108.4	70.7	6



Indicator: *Sexual assault (rate is per 1,000 population)*

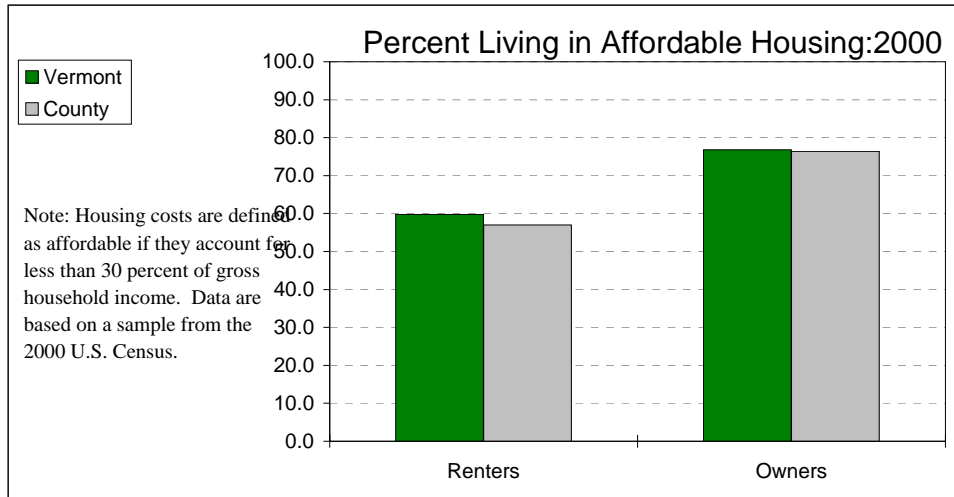
	Vermont Rate	County Rate	Community Rate	Community Number
Year: 1997	2.1	n/a	1.2	10
Year: 2006	0.5	0.4	0.5	4



OUTCOME: COMMUNITIES PROVIDE SAFETY AND SUPPORT FOR FAMILIES AND INDIVIDUALS

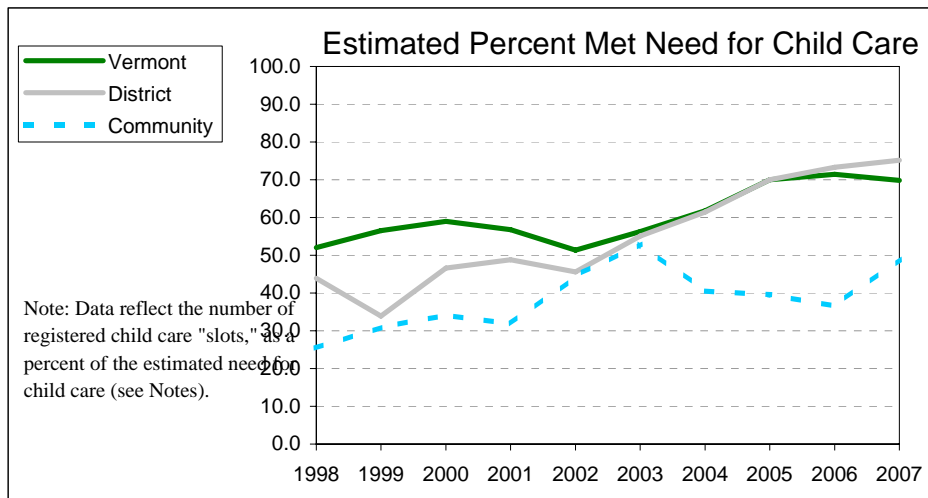
Indicator: *Percent living in affordable housing*

	<i>Vermont</i>	<i>County</i>	<i>County</i>
	<i>Rate</i>	<i>Rate</i>	<i>Number</i>
Year: 2000 Renters	59.7	57.0	3,986
Owners	76.8	76.4	9,043



Indicator: *Estimated percent met need for child care*

	<i>Vermont</i>	<i>District</i>	<i>Community</i>
	<i>Rate</i>	<i>Rate</i>	<i>Rate</i>
Year: 1998	52.0	43.9	25.4
Year: 2007	69.8	75.2	49.0



37: Report for the community served by Rutland Central Supervisory Union

(Includes the towns of Proctor, Rutland Town, West Rutland) County: Rutland; AHS District: Rutland

Indicator	Numerator	Population Denominator	Per person rate	Lower limit, 95% confidence range	Upper limit, 95% confidence range
Parents talk regularly with students about school	Percent 8th Graders	Percent 12th Graders			
State, 2007	78	80			
Community, 2007	85	75			
Youth involved in school decision-making	Percent 8th Graders	Percent 12th Graders			
State, 2007	52	51			
Community, 2007	49	38			
Voting in general elections					
State, 2006	263,026	490,745	0.00000		
AHS District, 2006	26,016	50,805	0.51208		
Community, 2006	3,785	6,870	0.55095		
Early prenatal care					
State, 2004	5,709	6,341	0.90033	0.89296	0.90770
AHS District, 2004	511	561	0.91087	0.88730	0.93445
Community*, 2004	50	54	0.91975	0.65874	1.18077
Low birthweight					
State, 2004	423	6,592	0.06417	0.05825	0.07008
AHS District, 2004	33	586	0.05631	0.03671	0.07592
Community*, 2004	6	57	0.09884	0.01580	0.18188
"New baby" visits					
State 'WB', 2006	3,546	6,476	0.54756		
District 'WB', 2006	1,503	6,476	0.23209		
State 'HB', 2006	536	591	0.90694		
District 'HB', 2006	107	591	0.18105		
Infant mortality					
State, 2004	29	6,597	0.00440	0.00276	0.00603
AHS District, 2004	2				
Community*, 2004	1				
Children 0-4 on welfare					
State, 2006	2,965	32,496	0.09124		
AHS District, 2006	375	3,009	0.12463		
Community, 2006	29	348	0.08333		
Injuries (ages 0-9)					
State, 2005	100	66,050	0.00151	0.00122	0.00181
County, 2005	13	6,344	0.00205	0.00091	0.00319
Overweight among WIC-enrolled children					
State, 2005	2,001	6,669	0.30000		
AHS District, 2005	112	396	0.28300		

*Data are for a 3-year average

37: Report for the community served by Rutland Central Supervisory Union

(Includes the towns of Proctor, Rutland Town, West Rutland) County: Rutland; AHS District: Rutland

Indicator	Numerator	Population Denominator	Per person rate	Lower limit, 95% confidence range	Upper limit, 95% confidence range
Child mortality					
State, 2005	26	99,696	0.00026	0.00016	0.00036
AHS District, 2005	2				
Community*, 2005	0				
Kindergarten immunizations					
State, 2007	6,338	6,838	0.92688	0.92071	0.93305
Community, 2007	92	93	0.98925	0.78297	1.19552
First Grade Screenings	Screened-- Vision	Screened-- Hearing	Enrollment		
State, 2007	6,247	6,237	6,497		
Community, 2007	82	82	78		
"Ready Kindergartners"	Approaches to Learning (Percent)	Cognitive Development & General Knowledge (Percent)	Communication (Percent)	Social-Emotional Development (Percent)	Health and Well-Being (Percent)
State, 2006	64	59	81	62	80
Community, 2006	67	62	93	73	78
"Ready Schools"	Transitions (Percent)	Instr. & Staff Dev. (Percent)	Resources (Percent)	Partnership (Percent)	
State, 2005	90	63	96	74	
Community, 2005	80	71	100	82	
School attendance	Percent				
State, 2007	95.3				
Community, 2007	95.1				
Developmental Reading Assessment					
State, 2007	5,365	6,342	0.84595		
Community, 2007	91	114	0.79825		
Reading/Writing NECAP Performance	# Meeting standard		# Test-takers		
	4th Grade	7th Grade	4th Grade	7th Grade	
State, 2007					
Reading	4,369	4,448	6,242	6,843	
Writing	3,116	3,275	6,231	6,822	
Community, 2007					
Reading	63	68	80	85	
Writing	42	54	80	85	
Math NECAP Performance	# Meeting standard		# Test-takers		
	4th Grade	7th Grade	4th Grade	7th Grade	
State, 2007	4,061	4,103	6,247	6,838	
Community, 2007	56	291	80	364	

*Data are for a 3-year average

37: Report for the community served by Rutland Central Supervisory Union

(Includes the towns of Proctor, Rutland Town, West Rutland) County: Rutland; AHS District: Rutland

Indicator	Numerator	Population Denominator	Per person rate	Lower limit, 95% confidence range	Upper limit, 95% confidence range
Special education					
State, 2006	14,088	93,288	0.15102		
Community, 2006	151	1,202	0.12562		
High school completion					
State, 2005	6,237	7,327	0.85		
Community, 2005	52	61	0.85		
Children in poverty					
State, 1999	15,442	143,964	0.10726		
County, 1999	1,911	14,341	0.13325		
Community, 1999	233	1,943	0.11992		
Children in families receiving Food Stamps					
State, 2006	18,201	133,163	0.13668		
AHS District, 2006	2,247	12,836	0.17505		
Community, 2006	216	1,617	0.13358		
Child support paid					
State, 2006	55,834,059	62,032,248	0.90008		
County, 2006	5,420,099	5,952,295	0.91059		
Parentage established					
State, 2006	13,081	17,777	0.73584		
County, 2006	1,432	1,970	0.72690		
Child abuse & neglect					
State, 2006	1,125	133,163	0.00845	0.00796	0.00894
AHS District, 2006	85	12,836	0.00662	0.00519	0.00806
Community*, 2006	7	1,665	0.00400	0.00090	0.00711
Children 5-17 on welfare					
State, 2006	4,347	100,667	0.04318		
AHS District, 2006	579	9,827	0.05892		
Community, 2006	35	1,269	0.02758		
Out-of-home placements (under age 18)					
State, 2006	1,117	133,163	0.00839	0.00790	0.00888
County, 2006	98	12,836	0.00763	0.00609	0.00918
Average moves within substitute care					
	# of moves	# of children	Average # moves per child		
State, 2006	2,044	530	3.9		
AHS District, 2006	231	64	3.6		
Community, 2006	12	4	3.0		
Participation in youth programs					
	Percent 8th Graders	Percent 12th Graders			
State, 2007	28	31			
Community, 2007	22	31			

*Data are for a 3-year average

37: Report for the community served by Rutland Central Supervisory Union

(Includes the towns of Proctor, Rutland Town, West Rutland) County: Rutland; AHS District: Rutland

Indicator	Numerator	Population Denominator	Per person rate	Lower limit, 95% confidence range	Upper limit, 95% confidence range
Students volunteering	Percent 8th Graders	Percent 12th Graders			
State, 2007	44	50			
Community, 2007	38	50			
Students smoking cigarettes	Percent 8th Graders	Percent 12th Graders			
State, 2007	7	25			
Community, 2007	10	38			
Students using alcohol	Percent 8th Graders	Percent 12th Graders			
State, 2007	19	18			
Community, 2007	55	51			
Students using marijuana	Percent 8th Graders	Percent 12th Graders			
State, 2007	8	34			
Community, 2007	8	46			
Teen sexually transmitted diseases					
State, 2006	306	46,163	0.00663	0.00589	0.00737
County, 2006	11	4,489	0.00245	0.00097	0.00393
Young teen pregnancy					
State, 2004	210	13,274	0.01582	0.01370	0.01794
AHS District, 2004	22	1,361	0.01616	0.00927	0.02306
Community*, 2004	1	192	0.00522	-0.00522	0.01565
Injuries (ages 10-17)					
State, 2005	169	67,433	0.00251	0.00213	0.00288
County, 2005	18	6,668	0.00270	0.00143	0.00397
"Unmanageables" in custody					
State, 2006	190	66,570	0.00285	0.00245	0.00326
AHS District, 2006	34	6,487	0.00524	0.00344	0.00704
Community*, 2006	4	911	0.00402	-0.00018	0.00823
Delinquency, court dispositions					
State, 2006	1,397	66,570	0.02099	0.01990	0.02207
County, 2006	164	6,487	0.02528	0.02146	0.02910
Delinquents in custody					
State, 2006	351	66,570	0.00527	0.00472	0.00582
AHS District, 2006	40	6,487	0.00617	0.00422	0.00812
Community*, 2006	4	911	0.00402	-0.00018	0.00823
Teen violent deaths					
State, 2005	24	45,801	0.00052	0.00031	0.00074
AHS District, 2005	4				
Community*, 2005	1				

*Data are for a 3-year average

37: Report for the community served by Rutland Central Supervisory Union

(Includes the towns of Proctor, Rutland Town, West Rutland) County: Rutland; AHS District: Rutland

Indicator	Numerator	Population Denominator	Per person rate	Lower limit, 95% confidence range	Upper limit, 95% confidence range
High school seniors aspiring to further education, training, or employment	Percent				
State, 2005	85.0				
Community, 2005	78.0				
High school graduates continuing education	Percent				
State, 2005	69.4				
Community, 2005	58.7				
"New Families at Risk"					
State, 2004	188	2,850	0.06596	0.05685	0.07508
AHS District, 2004	24	256	0.09375	0.05548	0.13202
Community*, 2004	1	25	0.05333	-0.03904	0.14571
Out-of-home placements (ages 18-24)					
State, 2006	605	62,248	0.00972	0.00895	0.01049
County, 2006	71	6,050	0.01174	0.00895	0.01452
Injuries (ages 18-24)					
State, 2005	1,233	343,950	0.00358	0.00339	0.00378
County, 2005	176	34,932	0.00504	0.00430	0.00578
Teen non-violent deaths					
State, 2005	6	45,801	0.00013	0.00002	0.00024
AHS District, 2005	1				
Community*, 2005	0				
Injuries (ages 25-64)					
State, 2005	1,233	343,950	0.00358	0.00339	0.00378
County, 2005	176	34,932	0.00504	0.00430	0.00578
Adult smokers	Percent				
State, 2002-2006	19.6		0.196	0.190	0.202
County, 2002-2006	22.8		0.228	0.209	0.248
Adult "binge drinkers"	Percent				
State, 2002-2006	17.5		0.164	0.158	0.170
County, 2002-2006	17.7		0.167	0.149	0.187
Suicide (ages 18+)					
State, 2005	73	489,567	0.00015	0.00011	0.00018
AHS District, 2005	5				
Community*, 2005	0				
People above poverty					
State, 1999	532,547	588,053	0.90561		
County, 1999	54,684	61,399	0.89063		
Community, 1999	7,653	8,363	0.91510		

*Data are for a 3-year average

37: Report for the community served by Rutland Central Supervisory Union

(Includes the towns of Proctor, Rutland Town, West Rutland) County: Rutland; AHS District: Rutland

Indicator	Numerator	Population Denominator	Per person rate	Lower limit, 95% confidence range	Upper limit, 95% confidence range
Median family income					
State, 1999	\$48,625				
County, 1999	\$44,742				
Community, 1999	\$49,178				
Average annual wage					
State, 2006	\$34,974				
County, 2006	\$32,701				
Job creation					
State, 2006	1,687				
County, 2006	48				
Employment	Percent				
State, 2006	96.4				
County, 2006	96.2				
Adults (ages 18+) on welfare					
State, 2006	3,967	263,026	0.01508		
AHS District, 2006	520	26,016	0.01999		
Community, 2006	32	6,870	0.00466		
Elders in poverty					
State, 1999	6,217	73,355	0.08475		
County, 1999	783	8,896	0.08802		
Community, 1999	120	1,391	0.08627		
Injuries (ages 65+)					
State, 2005	1,366	81,982	0.01666	0.01579	0.01754
County, 2005	195	9,777	0.01994	0.01717	0.02272
Elders at risk for depression	Percent				
State, 2001-2005	6.3		0.060	0.053	0.068
County, 2001-2005	5.2		0.046	0.030	0.070
Adult abuse & neglect victims					
State, 2006	787	263,026	0.00299	0.00278	0.00320
AHS District, 2006	87	26,016	0.00334	0.00263	0.00406
Community, 2006	7	6,870	0.00102	0.00025	0.00179
Vocational Rehab. job placements					
State, 2006	1,389	2,274	0.61082		
County, 2006	167	268	0.62313		
Long-term care options	NF Residents	Percent	Waiver Participants	Percent	
State, 2007	1,997	54	1701	46	
County, 2007	264	57	196	43	
Youth valued by their community	Percent 8th Graders	Percent 12th Graders			
State, 2007	49	52			
Community, 2007	53	56			

*Data are for a 3-year average

37: Report for the community served by Rutland Central Supervisory Union

(Includes the towns of Proctor, Rutland Town, West Rutland) County: Rutland; AHS District: Rutland

Indicator	Numerator	Population Denominator	Per person rate	Lower limit, 95% confidence range	Upper limit, 95% confidence range
Youth who have an adult for help and advice	Percent 8th Graders	Percent 12th Graders			
State, 2007	88	92			
Community, 2007	88	87			
Out-of-home placements (ages 25+)					
State, 2006	2,694	490,745	0.00549	0.00528	0.00570
County, 2006	287	50,805	0.00565	0.00500	0.00630
Petitions for Relief from Abuse					
State, 2006	3,682	623,908	0.00590	0.00571	0.00609
County, 2006	620	63,641	0.00974	0.00898	0.01051
Violent crime					
State, 2006	800	623,908	0.00128	0.00119	0.00137
AHS District, 2006	69	63,641	0.00108	0.00082	0.00135
Community, 2006	6	8,487	0.00071	0.00013	0.00128
Sexual assault					
State, 2006	329	623,908	0.00053	0.00047	0.00210
AHS District, 2006	24	63,641	0.00038	0.00022	0.00053
Community, 2006	4	8,487	0.00047	0.00000	0.00094
Affordable housing					
State, 2000 Renters	37,413	62,621	0.5975		
State, 2000 Owners	81,058	105,551	0.7680		
County, 2000 Renters	3,986	6,995	0.5698		
County, 2000 Owners	9,043	11,844	0.7635		
Met need for child care					
State, 2007	34,674	49,667	0.69813		
District, 2007	3,500	4,741	0.75174		
Community, 2007	282	576	0.48980		

Indicator Sources and Explanatory Notes:

Estimated community population by age-group: These are estimates, not exact counts, prepared from Census Bureau estimates, together with estimation models based on regression techniques. Source: Vermont Department of Health.

Percent of students whose parents talk with them regularly about school: Youth who report that their parents talk with them at least once a week about school. Data are limited to students who participated in the survey, including those who do not reside in the towns covered by the supervisory union. Source: Vermont Department of Health, Office of Alcohol & Drug Abuse Programs; and Vermont Department of Education, *Youth Risk Behavior Survey*.

Percent youth who participate in school decision-making: Surveyed youth who “agree” or “strongly agree” with the statement, “Students help decide what goes on in my school.” Not all schools participated in the survey. Data refer to all surveyed students, including those who do not reside in the towns covered by the supervisory union. Source: Vermont Department of Health, Office of Alcohol & Drug Abuse Programs; and Vermont Department of Education, *Youth Risk Behavior Survey*.

Percent youth who report they help decide what goes on in their school: Surveyed youth who “agree” or “strongly agree” that they “help decide what goes on in my school.” Data are limited to students who participated in the survey, including those who do not reside in the towns covered by the supervisory union. Source: Vermont Department of Health, Office of Alcohol & Drug Abuse Programs; and Vermont Department of Education, *Youth Risk Behavior Survey*.

Percent of eligible population voting in general elections: Eligible population is considered to be residents aged 18 and older. Sources: Vermont Office of the Secretary of State; Vermont Department of Health, Population Estimates.

Percent early prenatal care: Those women giving birth who report receiving prenatal care beginning in the first three months of pregnancy, as a percent of all women giving birth who report on this information. Source: Vermont Department of Health, Vital Statistics System. Data here may differ slightly from those published by VDH, because the latter reflect latest revisions.

Percent low birthweight: Babies with birthweights under 5.5 pounds, as a percent of all babies with reported birthweights. Source: Vermont Department of Health, Vital Statistics System. Data here may differ slightly from those published by VDH, because the latter reflect latest revisions.

Percent of births where families receive a new baby visits: A home-visit is offered to nearly every new family; some families decline, or choose to receive information through some other route. Numerator is the estimated number of families with new babies, in the Agency of Human Services District, who received face-to-face information on community supports and services; denominator is the number of births recorded for residents of the Agency of Human Services District. Visits include those offered through the Healthy Babies program (during the calendar year named), and through regional Success By Six initiatives (“Welcome Baby” visits) (during the state fiscal year beginning July 1 of the named year). Some families may inadvertently be counted more than once. Sources: Vermont Department of Health; Vermont Agency of Human Services, Planning Division.

Infant mortality: Infants who die before 1 year of age; rate is per 1000 births. Source: Vermont Department of Health, Vital Statistics System. Data here may differ slightly from those published by VDH, because the latter reflect latest revisions.

Percent of people receiving welfare (Reach Up): Caseloads as of January, as a percent of the estimated population in each age-group. Sources: Vermont Department for Children & Families; Vermont Department of Health, Population Estimates.

Rate of injuries resulting in hospitalization: Hospital discharges with “injury” as the principal diagnosis. Rate is per 1000 population. Does not include injuries treated in emergency rooms or other outpatient settings. Sources: Vermont Hospital Discharge Datasets; Vermont Department of Health, Population Estimates.

Percent of WIC-enrolled children overweight or at risk: Percent of children ages 2-4 enrolled in the Special Supplemental Nutrition Program for Women, Infants, and Children (“WIC”) whose weight-and-height put them in the “overweight” category (95th or higher percentile of Body Mass Index), or “at risk for overweight” category (between the 85th and 95th percentiles). In Vermont, approximately 40 percent of children in this age group are enrolled in WIC. Source: Vermont Department of Health, Pediatric Nutrition Surveillance data.

Child mortality: Deaths of children aged 1 through 14 years. Rate is per 1000 population. Source: Vermont Department of Health, Vital Statistics System. Data here may differ slightly from those published by VDH, because the latter reflect latest revisions.

Immunizations at kindergarten entry: Estimated percent of all entering kindergartners who present evidence of having met the required immunization schedule (DTP 3, Polio 3, MMR 2). Beginning with the 1999-00 school year, two doses of measles vaccine are required; mumps and pertussis vaccines are not required. School data refer to all enrolled students, including those who do not reside in the towns covered by the supervisory union. Data are for the school year ending in the calendar year named. Source: Vermont Department of Health, Immunization Program.

First-grade screening for vision and hearing problems: First-graders reported screened by Vermont public schools, as a percent of reported enrollment. State law requires schools to assure that vision and hearing screening has taken place in grades 1-3, 5, 7, and 9, and vision screening in grade 10. School data refer to all enrolled students, including those who do not reside in the towns covered by the supervisory union. Data are for the school year ending in the calendar year named. Source: Vermont Department of Education, Health Services Screening Report.

Kindergartners ready for school: Children were rated by kindergarten teachers 4-6 weeks into the school year on four dimensions of readiness for school. Each dimension was measured by multiple items; percent of children counted for this indicator were those rated as “practicing” or “performing independently” on each item within the dimensions. Not all kindergarten teachers in all school districts participated in the survey; thus, the state figures are aggregate data only, and are not necessarily representative of the state as a whole. School data refer to all enrolled students, including those who do not reside in the towns covered by the supervisory union. Data are for the school year ending in the calendar year named. Source: Vermont Agency of Human Services and Vermont Department of Education, “Ready Kindergartners” Questionnaire.

“Ready Schools”: Principals of schools with kindergartens provided information about school resources and practices related to kindergarten children and their families. In addition, kindergarten teachers provided information about their professional preparation and their access to a number of support services. These responses were grouped into four dimensions of “ready schools.” Members of the Vermont Early Childhood Workgroup developed standards for each dimension, based on weights assigned to specific item-responses. Data as reported show schools’ responses as a percent of the standard on each dimension. Not all kindergarten teachers and principals in all school districts participated in the survey; thus, the state figures are aggregate data only, and are not necessarily representative of the state as a whole. School data refer to all enrolled students, including those who do not reside in the towns covered by the supervisory union. Data are for the school year ending in the calendar year named. Source: Vermont Agency of Human Services and Vermont Department of Education, “Ready Schools” Teacher and Principal Questionnaires.

School attendance rate: Percent of school days attended, averaged across all students in all schools within the supervisory union. School data refer to all enrolled students, including those who do not reside in the towns covered by the supervisory union. Data are for the school year ending in the calendar year named. Source: Vermont Department of Education.

Percent of 2nd graders meeting standard on Developmental Reading Assessment: Students meeting or exceeding the criterion for reading success by Spring of second grade. School data refer to all enrolled students, including those who do not reside in the towns covered by the supervisory union. Data are for the school year ending in the calendar year named. Source: Vermont Department of Education.

NECAP reading/writing performance: The New England Common Assessment Program tests measure student performance against standards adopted by the Vermont Board of Education. Performance reported on here is the percentage of test-taking students who scored at a “proficient” level or better. School data refer to all enrolled students, including those who do not reside in the towns covered by the supervisory union. Data are for the school year ending in the calendar year named. Source: Vermont Department of Education.

NECAP math performance: The New England Common Assessment Program tests measure student performance against standards adopted by the Vermont Board of Education. Performance reported on here is the percentage of test-taking students who scored at a “proficient” level or better. School data refer to all enrolled students, including those who do not reside in the towns covered by the supervisory union. Data are for the school year ending in the calendar year named. Source: Vermont Department of Education.

Percent students receiving special education: Students identified, as of December 1, as eligible for Individual Education Plans (IEPs) under special education statutes. School data refer to all enrolled students, including those who do not reside in the towns covered by the supervisory union. Source: Vermont Department of Education.

Estimated percent high school completion: The number of graduates from a high school class (e.g., class of 2002) as a percent of (that number plus the reported dropouts from the class that year and for each of the three previous years. This methodology does not account for students who may drop out and re-enroll in either the same school or another the following year. School data refer to all enrolled students, including those who do not reside in the towns covered by the supervisory union. Data are for the school year ending in the calendar year named. Source: Vermont Department of Education.

Percent children in poverty: Related children (ages 0-17) in households earning less than the federal poverty threshold (this averaged \$12,674 for a family of four in 1989, and \$17,105 in 1999). Source: U.S. Bureau of the Census, Tape STF3.

Percent children in families receiving Food Stamps: There is currently no reliable measure of child poverty at a sub-state level. Families eligible for Food Stamps are those with incomes 130% of federal poverty level, or less. Not all eligible families receive Food Stamps. Enrollments may be sensitive to differences in public awareness of the program. Caseload data are for January of the year named. Source: Vermont Department for Children & Families.

Percent child support paid: Annual total amount of payments received, as a percent of annual total amount payable for cases with current or arrears obligations. Source: Vermont Department for Children & Families.

Percent parentage established for out-of-wedlock child support cases: Data refer to cases where parentage has been legally established, as a percentage of current out-of-wedlock cases. Because parentage may be established at any time, percentage may exceed 100. Source: Vermont Department for Children & Families.

Child abuse and neglect: Substantiated victims of physical abuse, sexual abuse, or neglect, aged 0 through 17, per 10,000 population. Because the substantiation status of abuse/neglect reports may change over time, data here are adjusted to reflect reported state totals of substantiated victims, as of March for the preceding year. Sources: Vermont Department for Children & Families; Vermont Department of Health, Population Estimates.

Out-of-home placements: Counts include persons not living with biological or adoptive parents and not living independently. Includes placements made by the Departments of Corrections, Developmental and Mental Health Services, Education, and Children & Families. Residence for Education placements is determined by parents’ residence, for DDMHS placements by zip code (zip codes that cross county boundaries are resolved in favor of the county with the greatest population), for Children & Families by person’s town of residence, and for Corrections by court of sentencing. State data include cases for which county of residence could not be determined. Counts are as of June, except for Education data which are as of December. Persons may be counted more than once if served by multiple systems. Rates are per 1000 population. Sources: Vermont Department of Corrections, Vermont Department for Children & Families, Vermont Department Education, Vermont Department of Health, Population Estimates.

Average number of moves within the child substitute care system: For cases closed within the year, not counting the initial removal from and return to home, or planned short-term visits. Because these are averages, the data are sensitive to individual cases with unusually high or low numbers of moves. Source: Vermont Department for Children & Families.

Percent students participating in youth programs: Surveyed students who reported spending 1 or more hours per week in an average week in clubs or organizations outside of school (not including sports). Data refer to all surveyed students, including those who do not reside in the towns covered by the supervisory union. Source: Vermont Department of Health, Office of Alcohol & Drug Abuse Programs; and Vermont Department of Education, *Youth Risk Behavior Survey*.

Percent youth volunteering in their community: Surveyed students who reported spending 1 or more hours per week in an average week helping other people without getting paid (such as helping out at a hospital, daycare center, food shelf, youth program, community service agency, or doing other things) to make their community a better place for people to live. Data refer to all surveyed students, including those who do not reside in the towns covered by the supervisory union. Source: Vermont Department of Health, Office of Alcohol & Drug Abuse Programs; and Vermont Department of Education, *Youth Risk Behavior Survey*.

Percent students smoking cigarettes: Percent of surveyed students reporting they smoked cigarettes within the past 30 days. Not all schools participated in the survey. Data refer to all surveyed students, including those who do not reside in the towns covered by the supervisory union. Source: Vermont Department of Health, Office of Alcohol & Drug Abuse Programs; and Vermont Department of Education, *Youth Risk Behavior Survey*.

Percent students using alcohol: Percent of surveyed students reporting they had one or more drinks of alcohol within the past 30 days. Not all schools participated in the survey. Data refer to all surveyed students, including those who do not reside in the towns covered by the supervisory union. Source: Vermont Department of Health, Office of Alcohol & Drug Abuse Programs; and Vermont Department of Education, *Youth Risk Behavior Survey*.

Percent students using marijuana: Percent of surveyed students reporting they smoked marijuana within the past 30 days. Not all schools participated in the survey. Data refer to all surveyed students, including those who do not reside in the towns covered by the supervisory union. Source: Vermont Department of Health, Office of Alcohol & Drug Abuse Programs; and Vermont Department of Education, *Youth Risk Behavior Survey*.

Teen sexually-transmitted diseases: Reported incidence of chlamydia, gonorrhea, and syphilis among 15- to 19-year olds. Rate is per 1000 population. Source: Vermont Department of Health, Epidemiology Division, and Population Estimates.

Young teen pregnancy: Includes resident births, abortions, and fetal deaths reported to the Vermont Department of Health for women aged 15 through 17 years; does not include abortions obtained out of state. Rate is per 1000 female population aged 15-17. Source: Vermont Department of Health, Vital Statistics System. Data here may differ slightly from those published by VDH, because the latter reflect latest revisions.

“Unmanageable” children in custody: Average daily number of “Children in Need of Supervision” in VT Department for Children & Families custody. Rate is per 10,000 children ages 10 through 17 years. As of July 1, 1996, children ages 16 and 17 may not enter custody as “unmanageables.” Sources: Vermont Department for Children & Families; Vermont Department of Health, Population Estimates.

Court dispositions for delinquency: Delinquency cases filed in Family Court within the fiscal year, per 10,000 children aged 10-17. Delinquency cases may be disposed of by a finding of delinquency, a dismissal or withdrawal of the petition, a dismissal following satisfactory completion of diversion, or a transfer to criminal court. Residence information allows identification by county, not supervisory union area. Sources: Vermont Office of the Court Administrator; Vermont Department of Health, Population Estimates.

Delinquents in custody: Average daily number of delinquent children in VT Department of Social & Rehabilitation Services custody. Rate is per 10,000 children aged 10 through 17. Sources: Vermont Department of Children & Families; Vermont Department of Health, Population Estimates.

Teen violent deaths: Deaths of 15- to 19-year-olds with cause reported as injuries, suicide, or homicide. Rate is per 1000 population aged 15 through 19. Source: Vermont Department of Health, Vital Statistics System. Data here

may differ slightly from those published by VDH, because the latter reflect latest revisions.

Percent high school seniors with aspirations for education, vocational training or employment: Percent of reporting high school seniors indicating post-graduation plans for 4-year or 2-year college, vocational /technical training, or full-time employment. Source: Vermont Department of Education.

Percent of graduating high school seniors who continue their education within six months: Estimated proportion of the graduating class of the year named who enter post-secondary education. Source: Vermont Student Assistance Corporation, *Senior Survey*.

“New Families at Risk”: Defined as the percent of first births that are to unmarried women younger than 20, with less than 12 years education. According to national statistics, families with all 3 “risk factors” (unmarried status, teenage, little education) are 10 times more likely to live in poverty than those with none of the 3 factors. Source: Vermont Department of Health, Vital Statistics System. Data here may differ slightly from those published by VDH, because the latter reflect latest revisions.

Teen non-violent deaths: Deaths of 15- to 19-year-olds from all causes except injuries, suicide, or homicide. Rate is per 1000 population age 15 through 19. Source: Vermont Department of Health, Vital Statistics System. Data here may differ slightly from those published by VDH, because the latter reflect latest revisions.

Percent of adults who smoke cigarettes: Percent of adults (age 18+) who report they are current smokers. Source: Vermont Department of Health, Vermont Behavioral Risk Factors Surveillance System.

Percent of adults who are “binge” drinkers: Percent of adults (age 18+) who report they consumed 5 or more alcoholic drinks on one occasion, at least once in the past 30 days. Source: Vermont Department of Health, Vermont Behavioral Risk Factors Surveillance System.

Suicide, age 18 years and older: Deaths reported as suicides. Rate is per 100,000 population over 18 years of age. Source: Vermont Department of Health, Vital Statistics System. Data here may differ slightly from those published by VDH, because the latter reflect latest revisions.

Percent people above poverty level: Persons with income above federal poverty level, as a percent of all persons for whom poverty level is determined. Source: U.S. Bureau of the Census.

Average median family income: Median income by town, averaged across the towns comprising the supervisory union area. The median is the income-level where half the incomes are above, and half are below, that level. Source: U.S. Bureau of the Census.

Average annual wage: Includes private-sector jobs covered by unemployment compensation (does not include self-employment). Figure covers hourly workers, salaried workers, and those paid on commission; includes part-time, full-time, and overtime wages. Source: Vermont Department of Labor.

Rate of job creation: The percent change from the previous year in the total number of private sector jobs covered by unemployment compensation (does not include self-employment). Source: Vermont Department of Labor.

Rate of employment: 100 minus the annual average unemployment rate (percent). Source: Vermont Department of Labor.

Percent of population aged 65+ in poverty: Individuals ages 65 years and older with income below the federal poverty level, as a proportion of all individuals in that age-group for whom poverty status is determined. Source: U.S. Bureau of the Census.

Percent of population aged 65+ at risk for depression: The percent of people in this age group whose health survey responses indicate they are at risk for depression. Source: Vermont Department of Health, Behavioral Risk Factors Surveillance System.

Rate of adult abuse/neglect: Victims reported to Adult Protective Services, Vermont Department of Aging & Disabilities, of persons aged 60 years or older, or those 18 and older with diagnosed disabilities, found to have been victims of abuse, neglect, or exploitation. Rate is per 10,000 population aged 18 and older. Data are by state fiscal

year. Sources: Vermont Department of Disabilities, Aging & Independent Living; Vermont Department of Health, Population Estimates.

Percent successful job placements among consumers of Vocational Rehabilitation services: Rate is the percent of all Vocational Rehabilitation cases closed within the year named, that received services that resulted in job placements. Source: Vermont Department of Disabilities, Aging & Independent Living, Division of Vocational Rehabilitation.

Balance of institutional and home & community-based ("waiver") options for long-term care: The proportion of Medicaid-funded nursing home residents, versus participants in home and community-based care settings, for those requiring long-term care services. Source: Vermont Department of Disabilities, Aging & Independent Living.

Percent of youth who report they feel valued by their community: Surveyed youth who “agree” or “strongly agree” with the statement, “In my community, I feel like I matter to people.” Not all schools participated in the survey. Data refer to all surveyed students, including those who do not reside in the towns covered by the supervisory union. Source: Vermont Department of Health, Office of Alcohol & Drug Abuse Programs, and Vermont Department of Education, *Youth Risk Behavior Survey*.

Percent of youth who report they have an adult they can usually turn to for help and advice: Surveyed youth who answered affirmatively to this item. Not all schools participated in the survey. Data refer to all surveyed students, including those who do not reside in the towns covered by the supervisory union. Source: Vermont Department of Health, Office of Alcohol & Drug Abuse Programs, and Vermont Department of Education, *Youth Risk Behavior Survey*.

Court petitions filed for “Relief From Domestic Abuse”: A plaintiff, with the assistance of a court worker, can file an affidavit at any time of day or night. Not all filings result in a signed court-order. Prior to fiscal year 1991, cases were filed in District or Superior Court; subsequent cases were filed in Family Court. Rate is per 10,000 population. Sources: Vermont Office of the Court Administrator; Vermont Department of Health, Population Estimates.

Rate of violent crime: Incidents of homicide, rape, aggravated assault, and robbery reported by local law enforcement agencies to the Vermont Department of Public Safety. Rate is per 100,000 population. Source: Vermont Department of Public Safety, *Vermont Crime Report*.

Rate of sexual assault: Reported rapes and other sexual offenses: Offenders and victims may be of any age. Many such crimes are unreported. Rate is per 1,000 population. Source: Vermont Department of Public Safety, *Vermont Crime Report*.

Percent living in affordable housing: Percent of households paying less than 30 percent of gross income for housing costs (including rent or mortgage, taxes, and utilities). Source: U.S. Bureau of the Census.

Percent met need for child care: Number of regulated child care slots as a percent of need for child care. Slots are estimated by capacity figures as of summer of the named year. For 1994, based on estimates of the number of two-earner and working single-parent households, need was estimated at 50 percent of the population aged 0-12; for 1998-02, need was estimated at 55 percent. Sources: Ad Hoc Task Force on Child Care, *Investing in Vermont's Future: Strategies for Strengthening Vermont's Child Care Infrastructure*, 1995; Vermont Department for Children & Families.

40 Developmental Assets

EXTERNAL ASSETS

SUPPORT

1. *Family support*: Family life provides high levels of love and support
2. *Positive family communication*: Parents and child communicate positively; child is willing to seek parents' advice and counsel
3. *Other adult relationships*: Child receives support from three or more non-parent adults
4. *Caring neighborhood*: Child experiences caring neighbors
5. *Caring school climate*: School provides a caring, encouraging environment
6. *Parent involvement in schooling*: Parents are actively involved in helping child succeed in school

EMPOWERMENT

7. *Community values youth*: Child perceives that community adults value youth
8. *Youth given useful roles*: Youth are given useful roles in community life
9. *Community service*: Child gives one hour or more per week to serving in one= community.
10. *Safety*: Child feels safe in home, school, and neighborhood

BOUNDARIES AND EXPECTATIONS

11. *Family boundaries*: Family has clear rules and consequences, and monitors whereabouts
12. *School boundaries*: School provides clear rules and consequences
13. *Neighborhood boundaries*: Neighbors would report undesirable behavior to family
14. *Adult role models*: Parent(s) and other adults model pro-social behavior
15. *Positive peer influence*: Child's best friends model responsible behavior
16. *High expectations*: Both parents and teachers press child to achieve

TIME

17. *Creative activities*: Involved three or more hours per week in lessons or practice in music, theater, or other arts
18. *Youth programs*: Involved three hours or more per week in sports, clubs, or organizations at school and/or community organizations
19. *Religious community*: Involved one or more hours per week
20. *Time at home*: Out with friends "with nothing special to do," two or fewer nights per week

INTERNAL ASSETS

EDUCATIONAL COMMITMENT

21. *Achievement motivation*: Child is motivated to do well in school
22. *School performance*: Child has B average or better
23. *Homework*: Child reports one or more hours of homework per day
24. *Bonding to school*: Child cares about her/his school
25. *Reading for pleasure*: Child reads for pleasure three or more hours per week

VALUES

26. *Caring*: Child places high value on helping other people
27. *Equality and social justice*: Child places high value on promoting equality and reducing hunger and poverty
28. *Integrity*: Child acts on convictions, stands up for her/his beliefs
29. *Honesty*: Child “tells the truth even when it is not easy”
30. *Responsibility*: Child accepts and takes personal responsibility
31. *Restraint*: Child believes it is important not to be sexually active or to use alcohol or other drugs

SOCIAL COMPETENCIES

32. *Planning and decision-making*: Child has skill to plan ahead and makes choices
33. *Interpersonal competence*: Child has empathy, sensitivity, and friendship skills
34. *Cultural competence*: Child has knowledge of, and comfort with, people of different racial backgrounds
35. *Resistance skills*: Child can resist negative peer pressure
36. *Peaceful conflict resolution*: Child seeks to resolve conflict non-violently

POSITIVE IDENTITY

37. *Personal control*: Child feels she/he has control over “things that happen to me”
38. *Self-esteem*: Child reports high self esteem
39. *Sense of purpose*: Child reports “my life has a purpose”
40. *Positive view of personal future*: Child is optimistic about his/her personal future

© Search Institute, 700 South 3rd Street, Minneapolis, MN 55415, 612-376-8955